



MT. HOOD COMMUNITY COLLEGE



KNOWLEDGE *for* SUCCESS

TRANSFER ACTIVITY REPORT FALL 2002

**Covering MHCC Graduates and Non-Returning Credit Students for Academic Years
1996-97 Through 2000-2001
(With Appendices)**

For additional information contact:

Dr. R. Dan Walleri
Director, Research & Planning
Mt. Hood Community College
26000 SE Stark St.
Gresham, OR 97030
(503) 491-6924

wallerid@mhcc.edu

http://www.mhcc.edu/campus/campus_info/allabout/research/publications/main.htm

TRANSFER ACTIVITY REPORT

FALL 2002

Executive Summary

The Mt. Hood Community College (MHCC) District Board has recently reaffirmed the importance of the transfer function through adoption of a revised mission and vision statement in September 2001 (i.e., knowledge-based education). In particular, the Board identified improving the transfer function as one of its five “key priorities” in review of the MHCC operational plan in May 2002. This report is one response to this priority and is designed to provide a benchmark upon which subsequent efforts to improve transfer can be evaluated. The data for this report is derived from administrative unit record matches between MHCC and other agencies and institutions, and offers a fairly comprehensive overview of subsequent transfer activity by MHCC students. Following are the highlights.

From 1996-97 through 2000-2001, 75,154 students enrolled for credit at MHCC (unduplicated by year but not across years). Of these, 29,948 or 39.8% did not re-enroll at MHCC. Of these non-returning MHCC students, 10,004 or **33.4%** engaged in transfer activity. The 5,100 students subsequently attending a 4-year college generated over 7,000 instances of transfer through fall 2002 (including multiple institutions). The top destinations for MHCC 4-year transfers are Portland State University (PSU) at 34.7% of total, other Oregon University System (OUS) institutions 24.5%, and other (public/private, in-state and out-of-state) 40.9%. The OUS total is 59.1%.

Of the 5,266 non-returning transfer majors, 1,523 or **28.9%** subsequently attended a four-year institution. This reflects about 300 or 25-34% per year of non-returning transfer majors. This “transfer rate” is consistent with national figures (Transfer Assembly Project).

Top transfer programs by number of students transferring to a four-year college or university are Business Administration (304), Liberal Arts (229), Education (143), Psychology (111), Music (83), Engineering (70), Computer Science (67), and Biology (50).

Ninety percent of MHCC transfers to OUS institutions earn a 2.00 GPA or higher with over 40% achieving a 3.00 GPA or higher. Academic performance at PSU is comparable to that of PSU native students and other community college transfer students.

Of the total non-returning credit student population, 4,902 or 16.4% made a lateral transfer (another 2-year college).

TRANSFER ACTIVITY REPORT

FALL 2002

Table of Contents

	<i>Page</i>
Executive Summary	2
Table of Contents	3
Introduction	4
Transfer to Four-Year Colleges and Universities	6
Transfer by MHCC Major	8
Lateral Transfer Activity	10
OUS Transfer Performance	11
Course-Based Transfer Evaluation	13
<i>Figures</i>	
Figure 1. MHCC Percent FTE by Type of Program	6
Figure 2. Top Destinations of MHCC 4-Year Transfers	7
Figure 3. Number of Non-Returning MHCC Transfer Majors Attending 4-Year College by Fall 2002	7
Figure 4. Percent of Non-Returning MHCC Transfer Majors Attending 4-Year College by Fall 2002	8
Figure 5. Percent of Prior Year Oregon Community College Transfer Majors Attending OUS Institutions	11
Figure 6. Spring End of Term GPA by Year Admitted for MHCC Transfers to OUS	12
<i>Tables</i>	
Table 1. MHCC Student Population and Transfer Activity	6
Table 2. Summary Four-Year Transfer Rate by MHCC Student Transfer Major	8-9
Table 3. PSU Course-Based Transfer Performance	13
<i>Appendices</i>	
I. Overview of Portland State University/Community College Research Consortium	14
II. Four-Year Institutions to which MHCC Students Transfer by Year	16
III. Transfer Activity by MHCC Major by Year	37
IV. Course-Based Transfer Evaluation: MHCC Transfer Students Attending Portland State University in Selected Courses 1994-1999	70

TRANSFER ACTIVITY REPORT

FALL 2002

Introduction

The transfer function has been a key component of the American community college mission since its inception. Performance of this function has also been the basis for most of the critical review directed at community colleges [see Karabel, J. (1972). *Community Colleges and Social Stratification*. *Harvard Educational Review*, 42, 521-562; and Pascarella, E. T. and Terenzini, P. T. (1991). *How College Affects Students*. San Francisco: Jossey-Bass, pp. 372-373]. As noted by Pascarella and Terenzini, “there is consistent evidence that initial attendance at a two-year rather than a four-year college lowers the likelihood of one’s attaining a bachelor’s degree” (p. 372) On the other hand, community college students that do successfully transfer to four-year colleges tend to do as well as or even better than four-year native students. “In-short, when educational attainment is held constant, any residual occupational status disadvantages attributable to initial attendance at a two-year college become quite small and perhaps trivial” (Pascarella and Terenzini, p. 441).

Thus, the key to improving the transfer function of community colleges is to increase the number of entering students that successfully transfer to a four-year college or university. The Mt. Hood Community College District Board has recently reaffirmed the importance of the transfer function through adoption of a revised mission and vision statement in September 2001 (i.e., knowledge-based education). In particular, the Board identified improving the transfer function as one of its five “key priorities” in its review of the MHCC operational plan in May 2002. Improving student persistence is also one of the five key priorities and is intimately related to enhancing transfer success. If entering students are not successful at MHCC, especially during their first year, they are less likely to successfully transfer. As a result, the college has developed and is in the process of implementing action plans to improve both student persistence and transfer numbers. This report is an outgrowth of that effort and is designed to provide a benchmark upon which subsequent efforts can be evaluated.

The data for this report is derived from administrative unit record matches between MHCC and other agencies and institutions. The data for this report are derived from three sources as outlined below.

1. *National Student Clearinghouse (NSC)*. This agency was created primarily to facilitate the processing of student financial aid, but their database encompasses all enrollments at participating institutions and most institutions involved with federal financial aid participate. The enrollment search service of the NSC provides ability for institutions to track to which institutions their students subsequently transfer. Coverage is the major advantage of the NSC match but provides very limited data. For example, the NSC does not provide any academic performance data. The system will eventually allow for tracking the number of MHCC transfer students that eventually earn a bachelor’s degree.
2. *Oregon University System (OUS)*. Via the Oregon Community College Unified Reporting System (OCCURS), the Oregon Department of Community Colleges and Workforce

Development (ODCCWD) conducts a data exchange with the OUS Chancellor's Office. The ODCC-OUS match does provide data on academic performance. The major limitation of this data exchange is that unit record data is not returned to the community college. Thus, specific comparisons at the discipline or course level are not available.

3. *Portland State University/Community College Research Consortium (CRC)*. See **Appendix I** for overview and additional information on this consortium. The CRC has been engaged in research on attendance patterns and transfer performance involving PSU, MHCC, PCC and CCC since the early 1990s. Modeled after efforts in other parts of the country, the CRC has also developed a course-based transfer evaluation system. Essentially, these reports compare the academic performance of transfer students to PSU by sending institution and compared to native PSU students. The data is broken down by PSU course versus at what institution the student completed the prerequisite course. For example, for a specified Computer Science course at PSU, analysis of grades is provided with a breakdown by where the student completed the prerequisite Computer Science course. The advantage of this reporting system is that it provides data at a level that can be used by faculty at the community college to assess how well they are preparing students for subsequent course work at PSU. Of course, the major disadvantage is that the report is limited to PSU.

For all three data sources, coverage includes MHCC graduates and non-returning credit students for the academic years 1996-97 through 2000-2001. For example and using the NSC data exchange, all MHCC credit students for 1996-97 were first extracted from the MHCC database. Students that were continuing their education at MHCC were excluded, with the remainder submitted to the NSC. The data returned by the NSC identifies the institutions the student has subsequently attended through fall 2002. Student confidentiality and privacy is maintained throughout the matching process and only aggregate data is reported. That is, no individual identifiable information is released via these reporting systems.

With the above described data, fairly solid answers can be provided to the following questions.

1. *How many MHCC students subsequently attend another postsecondary institution? By MHCC major?*
2. *What is the academic success of MHCC students that subsequently attend an institution of the Oregon University System?*
3. *What is the academic success of MHCC students that subsequently attend Portland State University? By specific course work at PSU?*

The major limitation in these data sets is that the number of MHCC students that earn a bachelor's degree cannot be determined. However, as indicated above, this information will be available in future reports.

Transfer to Four-Year Colleges and Universities

Reversing recent trends, MHCC transfer enrollment grew in both absolute and percentage terms from fall 2000 to fall 2001 (see Figure 1). In fall 2001, transfer enrollment accounted for 46.0% of total compared to 43.7% in fall 2000.

Figure 1. MHCC Percent FTE by Type of Program

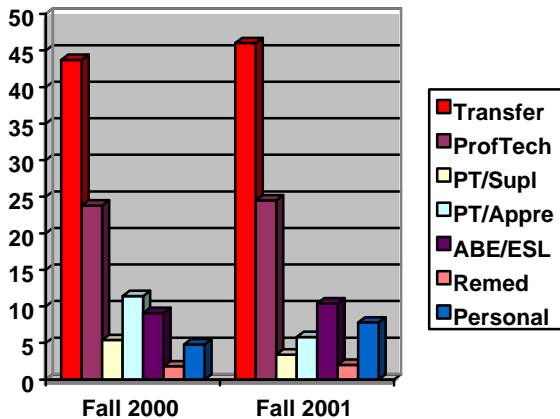
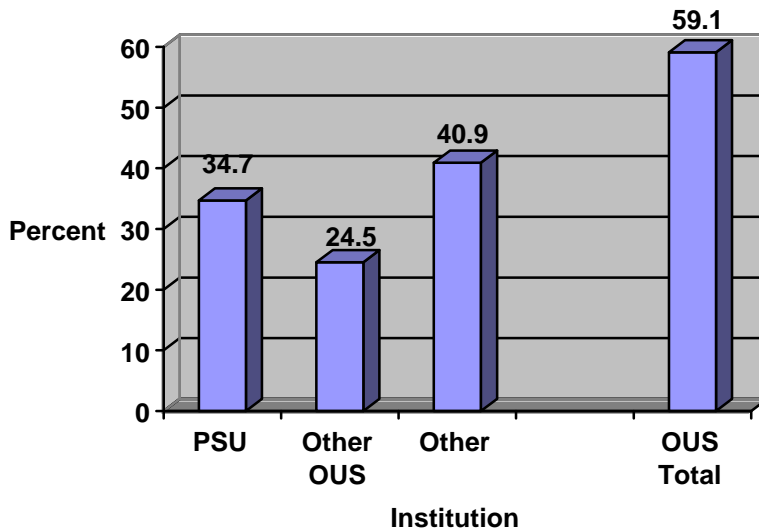


Table 1. MHCC Student Population and Transfer Activity

Graduates and non-returning credit students 1996-97 through 2000-2001: 29,948
 Engaged in transfer activity: 10,004 or 33.4%.
 Lateral: 4,904 or 16.4%
 4-Year: 5,100 or 17.0%
Transfer majors: 5,266 (17.6%)
 Lateral: 972 or 18.5%
4-Year: 1,523 or 28.9%

From 1996-97 through 2000-2001, 75,154 students enrolled for credit at MHCC (unduplicated by year but not across years). Of these, 29,948 or 39.8% did not re-enroll. Of these, 10,004 or 33.4% engaged in transfer activity (see Table 1). The 5,100 students subsequently attending a 4-year college generated over 7,000 instances of transfer through fall 2002 (including multiple institutions). Figure 2 identifies the top destinations for MHCC 4-year transfers. Portland State University accounts for 34.7% of total, other Oregon University System institutions 24.5%, and other (public/private, in-state and out-of-state) account for 40.9%. The OUS total is 59.1%. See **Appendix II** for complete listing of four-year institutions to which MHCC students subsequently transferred.

Figure 2. Top Destinations for MHCC 4-Year Transfers



As shown in Table 1, only 17.6% of the non-returning credit student population was in a declared transfer major. Figures 3 and 4 below depict the number and percent of graduates and non-returning MHCC transfer majors by year attending a four-year college or university by Fall 2002. This includes four-year colleges nation-wide (source: National Student Clearinghouse). Typically, about 300 or 25-34% of non-returning transfer majors will eventually transfer. This “transfer rate” is consistent with national figures (Transfer Assembly Project). Note that numbers/percents from year-to-year are not completely comparable since students from earlier years have had a longer period of time in which to transfer. Another 19% engaged in lateral transfer (i.e., Portland Community College).

Figure 3. Number of Non-Returning MHCC Transfer Majors Attending 4-Year College by Fall 2002

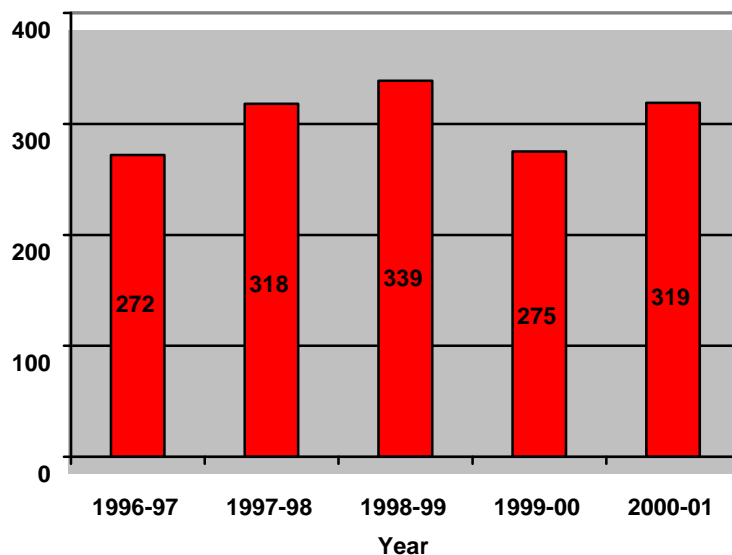
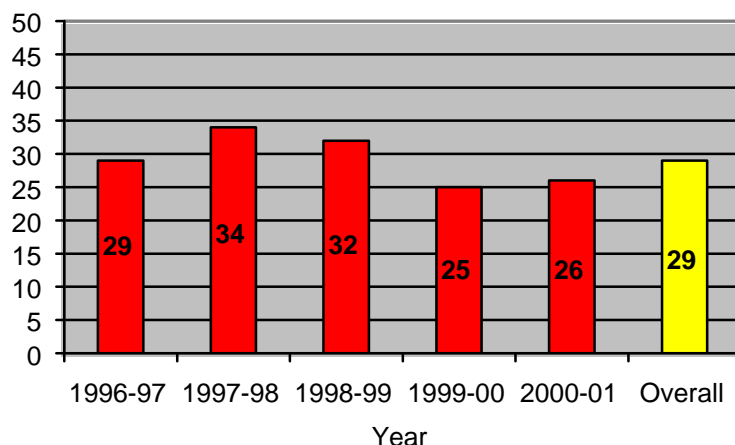


Figure 4. % of Non-Returning MHCC Transfer Majors Attending 4-Year College by Fall 2002



Transfer by MHCC Major

Table 2 provides a summary of the four-year transfer rate by MHCC student transfer major for all years combined (1996-97 through 2001-2001), sorted by total number of students transferring to a four-year college or university (see **Appendix III** for a breakdown by year). Top transfer programs by number of students transferring to a four-year college or university are Business Administration (304), Liberal Arts (229), Education (143), Psychology (111), Music (83), Engineering (70), Computer Science (67), and Biology (50). Top disciplines by percentage of students transferring are Dentistry (72%), Biochemistry (63%), PSU Co-Admissions (60%), General Social Science (63%), and Health Care Administration (100%). These latter programs have relatively few majors and the specificity of major suggests a relatively high level of motivation on the part of these students.

Table 2. Summary Four-Year Transfer Rate by MHCC Student Transfer Major Sorted by Total Number of Students Transferring (1996-97 through 2000-2001 Academic Years -- Transfer Activity Through Fall 2002)				
Major Title	Total Majors	Non-Returning	4-Year Transfers	4-Year%
Business Admin Transfer	1235	1040	304	29.2%
Gen St Liberal Arts Tran	941	817	229	28.0%
Education Transfer	530	480	143	29.8%
Psychology Transfer	394	344	111	32.3%
Music Transfer	309	286	83	29.0%
Engineering Transfer	226	217	70	32.3%
Computer Sci Transfer	368	321	67	20.9%
Bio,Ent,Mic,Bot,Zoo Tran	139	126	50	39.7%
Crim Jus Admin Transfer	266	236	41	17.4%

Table 2. Summary Four-Year Transfer Rate by MHCC Student Major Sorted by Total Number of Students Transferring (1996-97 through 2000-2001 Academic Years (Transfer Activity Through Fall 2002) con't

Major Title	Total Majors	Non-Returning	4-Year Transfers	4-Year%
Nursing Preprof Trans	217	203	40	19.7%
English Transfer	112	90	35	38.9%
Art Transfer	180	151	34	22.5%
Medicine Preprof Trans	76	68	22	32.4%
History Transfer	80	70	21	30.0%
Journalism Transfer	67	51	20	39.2%
Physical Education Trans	78	69	20	29.0%
Political Sci Transfer	51	45	17	37.8%
Sociology Transfer	46	41	16	39.0%
Theatre Transfer	68	57	16	28.1%
Pharmacy Preprof Trans	46	44	15	34.1%
Dentistry Preprof Trans	18	18	13	72.2%
Anthropology Transfer	28	23	12	52.2%
Phys Thrpy Preprof Trans	54	52	12	23.1%
Forest Res Preprof Trans	27	24	9	37.5%
Chemistry Transfer	16	14	8	57.1%
General Science Transfer	28	25	8	32.0%
Health,Health Ed Trans	19	19	8	42.1%
Mathematics Transfer	24	21	8	38.1%
Economics Transfer	13	12	7	58.3%
Hotel,Restr,Tour Trans	28	24	7	29.2%
Speech Transfer	23	18	7	38.9%
Veterinary Preprof Trans	24	23	7	30.4%
Fish Wildlife Transfer	14	12	6	50.0%
Internat Studies Trans	18	13	6	46.2%
Biochem,Biophy Transfer	7	8	5	62.5%
Foreign Lang Transfer	27	22	5	22.7%
Gen Soc Science Transfer	11	8	5	62.5%
Dental Hyg Preprof Trans	50	46	4	8.7%
Philosophy Transfer	15	13	4	30.8%
Physics Transfer	15	10	4	40.0%
Business Education Trans	14	15	3	20.0%
Chiro Preprof Transfer	37	32	3	9.4%
GenSt Lib Arts CO PSU T	5	5	3	60.0%
Agriculture Transfer	6	7	2	28.6%
Art Education Transfer	14	13	2	15.4%
Geography Transfer	5	5	2	40.0%
Geology Transfer	5	6	2	33.3%
Med Tech Preprof Trans	9	4	2	50.0%
Agri Business Transfer	2	2	1	50.0%
Accelerated Bus Adm Tran	4	4	1	25.0%
Environ Sciences Trans	3	3	1	33.3%
Health Care Admin Trans	2	1	1	100.0%
Optometry Preprof Trans	3	3	1	33.3%
Occ Thrpy Preprof Trans	2	1	0	0.0%
Religious Stdys Transfer	4	4	0	0.0%
TOTAL	6003	5266	1523	28.9%

The other MHCC major of significant note with regard to transfer is General Studies (which is not classified as a transfer degree). Each year, MHCC has well over 2,000 non-returning General Studies' majors. Of these, the vast majority do not re-enroll and only about 30% will subsequently engage in transfer activity (about half lateral and half to four-year institutions). Professional Technical programs with significant number of transfers include Computer Applications Specialist, Early Childhood Education, Mental Health/Human Services, and Aviation.

Lateral Transfer Activity

Again (see Table 1 above), from 1996-97 through 2000-2001, there were 29,948 graduates and non-returning credit students. Of these, 10,004 or 33.4% engaged in transfer activity. Of the 29,948 non-returning students, 5,100 or 17.0% attended a 4-year college (first instance of transfer) versus 4,902 or 16.4% made a lateral transfer (another 2-year college). Through fall 2002, lateral transfers involved over 280 different institutions from across the country. However, Portland Community College accounts for the largest share at 65%. Clark College in Vancouver, WA and Chemeketa Community College are the other two major institutions for lateral transfer (number of students transferring to Clackamas Community College was not available from NSC). Lateral transfer is not necessarily a negative outcome for the departing institution. If PCC did a similar study to this one, they would probably find a comparable number of students transferring to MHCC and other community colleges.

Lateral transfer activity, especially in an urban area such as Portland, is far more widespread than most people would suspect. The Portland State University/Community College Research Consortium (CRC) has been studying postsecondary attendance patterns and transfer behavior involving PSU, PCC, Mt. Hood and Clackamas since the early 1990s (for example see: Bach, S., Banks, M., Kinnick, M., Ricks, M., Stoering, J. & Walleri, R.D. (2000) Student attendance patterns and performance in an urban post-secondary environment. *Research in Higher Education*. 41 (3), pp. 315-330, also on the web at:

http://www.mhcc.edu/campus/campus_info/allabout/research/publications/performance.htm).

The CRC research and other studies suggest that the "linear" concept of transfer, in which a student begins at a community college, attends full-time for two years, then transfers to a 4-year college and earns a bachelor's degree after another two years of full-time attendance, is outdated. Actual transfer behavior is more like a "swirl," with students moving back and forth from 2-year and 4-year colleges and between 2-year colleges. Part-time attendance and periods of "stop out" are not uncommon. Using a very restricted definition of movement, the CRC identified forty-eight discrete attendance patterns, with students taking an average of ten years to complete a bachelor's degree at PSU after first entering one of the three Portland area community colleges.

Another component of lateral transfer is concurrent enrollment. In a separate report from the NSC for fall 2002, there were 319 students concurrently enrolled at MHCC and other institutions. Although PCC (37%), PSU (24%) and Clackamas (9%) accounted for most of these students, forty different institutions were represented. Given that some of these colleges were out-of-state, one would presume that these MHCC students were enrolled in distance education offerings.

OUS Transfer Performance

Figure 5 provides comparison of MHCC transfer majors attending OUS versus Oregon peer community colleges. MHCC's rate is relatively low compared to most of the peer colleges, but as noted above, 40% of MHCC transfer majors continue on to non-OUS institutions.

Figure 5. % of Prior Year Oregon Community College Transfer Majors Attending OUS Institutions

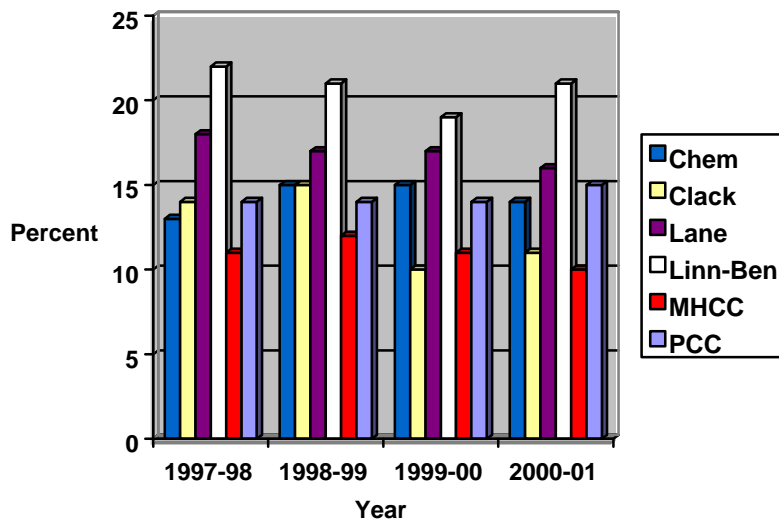
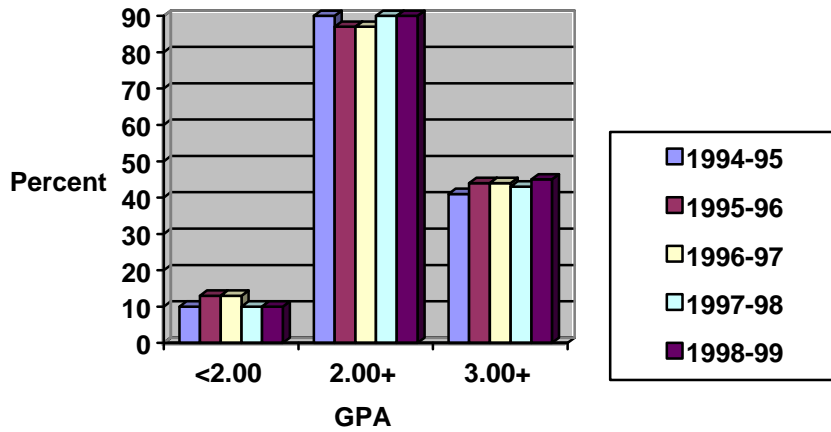


Figure 6 shows GPA distribution of MHCC students transferring to OUS institutions. The target 90% target for 2.00 or above GPA is currently being met. In addition, over 40% of MHCC transfers are achieving a 3.00 GPA or higher.

**Figure 6. Spring End of Term GPA by Year
Admitted for MHCC Transfers to OUS**



For additional information see: Transfer Activity in Oregon Postsecondary Education, 1996-97 to 2000-2001, a report submitted to the Joint Boards Articulation Commission, December 18, 2002, prepared by Oregon University System, Office of Academic Affairs (contact: Jim Arnold) in cooperation with the Oregon Department of Community Colleges and Workforce Development. See: <http://www.ous.edu/aca/OregonTransfer02.pdf>.

Course-Based Transfer Evaluation

Table 3 describes results from preliminary implementation of a course-based transfer evaluation design by the Portland State University/Community College Research Consortium (CRC). The design was originally developed at a community college and university on the East coast and has subsequently been adopted by numerous colleges across the country. The idea is to produce evaluation results useful by faculty at the community college in preparing students for transfer. The Office of Institutional Research and Planning (OIRP) at PSU produced the results reported here.

The table displays summary results for selected PSU courses with combined results for the 1994-1999 years. The breakdown of results is based on where students took the prerequisite course for the PSU course (PSU, PCC, MHCC, Clackamas or Clark). The count and percent of students passing (D grade and above) are reported for MHCC compared to PSU and the other community colleges. The selected courses cover Chemistry, Computer Science, Math, and Physics. The results for MHCC are very positive and comparable to results for PSU and other community college transfer students. Results by course are contained in **Appendix IV**.

Table 3. PSU Course-Based Transfer Performance					
Discipline	Course	Student Took Prerequisite at:	No Pass	Pass	%Pass
Chemistry	CH221 General Chemistry	PSU	55	140	71.8%
		MHCC	2	35	94.6%
		Other	11	90	89.1%
Computer Science	CS105, 161, 207, 208, 250	PSU	39	288	88.1%
		MHCC	12	69	85.2%
		Other	19	294	93.9%
Math	MTH112, 212, 213, 241, 251, 252, 253, 254, 256, 311, 332, 338, 343, 344, 346	PSU	289	1880	86.7%
		MHCC	30	176	85.4%
		Other	106	670	86.3%
Physics	PH201, 211, 221, 311, 464	PSU	12	151	92.6%
		MHCC	2	57	96.6%
		Other	8	200	96.2%

Appendix I

Overview of Portland State University/Community College Research Consortium (CRC)

The Governor's Commission on Higher Education in the Portland Metropolitan Area, in their final report of November 1990, recommended: "It will be especially important to implement programs that link students so they can transfer smoothly from high schools to community colleges and then to Portland State University or other institutions." Startup funding was made available through competitive grants to study and implement solutions for the problems identified by the Commission – the "Portland Agenda." Mary Kinnick, in the School of Education at PSU, received a grant to study transfer processes and identify possible barriers to a smooth transfer from the three local Portland area community colleges to PSU.

The project was funded for the year beginning July 1, 1992. A research team was formed which included Mary Kinnick and the directors of institutional research from the four institutions. Subsequent funding has included contributions from each of the institutions. A Memorandum of Understanding, signed by the presidents of the four institutions, described the purpose of the CRC and its expected activities. The CRC team polled administrators at their institutions to determine what information was needed to inform discussion regarding the transfer process, and their feedback helped to establish a focused agenda with three research questions:

1. What are the patterns of student movement between the community colleges and the university?
2. Do students lose credits when they transfer from community colleges to the university? If so, what is the nature of the loss?
3. How well do community college students perform academically after transferring to the university?

Since 1992, the CRC team initiated a series of studies designed to gain a better understanding of student attendance patterns and transfer – see references below. The results of these studies were instrumental in development of the co-admissions program with PSU that now includes Clackamas, Portland and Mt. Hood community college.

Other projects include the following.

- ◆ A course-based transfer evaluation reporting system has been developed that compares performance in selected PSU courses broken out by where students completed the course prerequisites – PSU or one of the community colleges.
- ◆ The CRC recently completed an evaluation of the co-admissions program at the request of the Metro Deans group. The evaluation includes an analysis of student retention rates and academic performance as well as a survey of students that have participated in the co-admissions program to date.

References

- Bach, S., Banks, M., Kinnick, M., Ricks, M., Stoering, J. & Walleri, R.D. (2000) Student attendance patterns and performance in an urban post-secondary environment. *Research in Higher Education*. 41(3), pp. 315-330.
- Bach, S., Banks, M., Kinnick, M., Ricks, M., Stoering, J. & Walleri, R.D. (1999). Case studies in transfer attendance within an urban postsecondary environment. Paper presented at the Thirty-Ninth Annual Forum of the Association for Institutional Research, Seattle, WA, May 30-June 2.
- Bach, S., Banks, M., Blanchard, D., Kinnick, M., Ricks, M. & Stoering, J. (1999). Reverse transfer students in an urban postsecondary system in Oregon. In Townsend, B.(ed.), *Understanding the Impact of Reverse Transfer Students on Community Colleges*. New Directions for Community Colleges, no. 106, 27(2), 47-56.
- Kinnick, M. K, Ricks, M. F, Bach, S. K., Walleri, R. D., Stoering, J. M., & Tapang, B. (1998). Student transfer between community colleges and a university in an urban environment. *Journal of Applied Research in the Community College*, 5(2), 89-99.

Appendix II

Four-Year Institutions to which MHCC Students Transfer by Year

School Year	College/University	TotalTxfrs
1996-97	ABILENE CHRISTIAN UNIVERSITY	1
1997-98	ABILENE CHRISTIAN UNIVERSITY	1
1998-99	ABILENE CHRISTIAN UNIVERSITY	2
2000-01	ABILENE CHRISTIAN UNIVERSITY	1
1996-97	ACADEMY OF ART COLLEGE	1
1997-98	ACADEMY OF ART COLLEGE	1
1998-99	ACADEMY OF ART COLLEGE	2
2000-01	ACADEMY OF ART COLLEGE	1
1999-00	ADAMS STATE COLLEGE	1
1998-99	AGNES SCOTT COLLEGE	1
1996-97	ALLIANT INTERNATIONAL UNIVERSITY	4
1997-98	ALLIANT INTERNATIONAL UNIVERSITY	1
1998-99	ALLIANT INTERNATIONAL UNIVERSITY - FRESN	1
1997-98	AMERICAN INTERNATIONAL COLLEGE	1
1997-98	AMERICAN UNIVERSITY	1
1999-00	AMERICAN UNIVERSITY	1
1998-99	ANTIOCH UNIVERSITY - NEW ENGLAND	1
1996-97	ANTIOCH UNIVERSITY - SEATTLE	1
1996-97	AQUINAS COLLEGE-TRADITIONAL	1
1996-97	ARGOSY UNIVERSITY - LOS ANGELES	1
2000-01	ARGOSY UNIVERSITY - SEATTLE	1
1996-97	ARIZONA STATE UNIVERSITY	1
1997-98	ARIZONA STATE UNIVERSITY	6
1998-99	ARIZONA STATE UNIVERSITY	5
1999-00	ARIZONA STATE UNIVERSITY	2
2000-01	ARIZONA STATE UNIVERSITY	7
1998-99	ARMSTRONG ATLANTIC STATE UNIVERSITY	1
1997-98	ASBURY THEOLOGICAL SEMINARY	1
1999-00	ASSUMPTION COLLEGE	1
1997-98	ATHENS STATE UNIVERSITY	1
1997-98	AUBURN UNIVERSITY	1
1996-97	AUBURN UNIVERSITY AT MONTGOMERY	1
1996-97	AUGSBURG COLLEGE	1
1998-99	AURORA UNIVERSITY	1
1997-98	AUSTIN-PEAY STATE UNIVERSITY MAIN CAMPUS	1
1996-97	AZUSA PACIFIC UNIVERSITY	4
1997-98	AZUSA PACIFIC UNIVERSITY	7
1998-99	AZUSA PACIFIC UNIVERSITY	2
2000-01	AZUSA PACIFIC UNIVERSITY	6
1997-98	BARRY UNIVERSITY	1
1998-99	BAYLOR COLLEGE OF MEDICINE	1

School Year	College/University	TotalTxfrs
2000-01	BAYLOR UNIVERSITY - LAW SCHOOL	1
2000-01	BELMONT UNIVERSITY	1
1997-98	BELOIT COLLEGE	1
1998-99	BELOIT COLLEGE	1
1996-97	BEMIDJI STATE UNIVERSITY	1
1998-99	BEMIDJI STATE UNIVERSITY	2
1996-97	BERRY COLLEGE	1
2000-01	BETHEL COLLEGE	1
1997-98	BIOLA UNIVERSITY	3
1998-99	BIOLA UNIVERSITY	1
1999-00	BIOLA UNIVERSITY	1
2000-01	BIOLA UNIVERSITY	1
1997-98	BLACK HILLS STATE UNIVERSITY	1
1996-97	BOISE STATE UNIVERSITY	4
1997-98	BOISE STATE UNIVERSITY	7
1998-99	BOISE STATE UNIVERSITY	7
1999-00	BOISE STATE UNIVERSITY	2
2000-01	BOISE STATE UNIVERSITY	4
2000-01	BOSTON COLLEGE	1
1996-97	BOSTON UNIVERSITY	1
1997-98	BOSTON UNIVERSITY	3
1999-00	BOSTON UNIVERSITY	2
2000-01	BOSTON UNIVERSITY	4
1997-98	BOWDOIN COLLEGE	1
1997-98	BOWLING GREEN STATE UNIVERSITY	1
1998-99	BRADLEY UNIVERSITY	1
1997-98	BRANDEIS UNIVERSITY	1
2000-01	BRIDGEWATER STATE COLLEGE	1
1996-97	BRIGHAM YOUNG UNIVERSITY	9
1997-98	BRIGHAM YOUNG UNIVERSITY	11
1998-99	BRIGHAM YOUNG UNIVERSITY	6
1999-00	BRIGHAM YOUNG UNIVERSITY	7
2000-01	BRIGHAM YOUNG UNIVERSITY	7
1996-97	BRIGHAM YOUNG UNIVERSITY - IDAHO	3
1997-98	BRIGHAM YOUNG UNIVERSITY - IDAHO	6
1998-99	BRIGHAM YOUNG UNIVERSITY - IDAHO	8
1999-00	BRIGHAM YOUNG UNIVERSITY - IDAHO	4
2000-01	BRIGHAM YOUNG UNIVERSITY - IDAHO	4
1999-00	BROWN UNIVERSITY	1
1998-99	BRYN MAWR COLLEGE	1
1996-97	CAL POLYTECHNIC STATE UNIVERSITY	1
1997-98	CAL POLYTECHNIC STATE UNIVERSITY	3
1999-00	CAL POLYTECHNIC STATE UNIVERSITY	1
1998-99	CAL STATE U- FRESNO	1

School Year	College/University	TotalTxfrs
1996-97	CALIFORNIA BAPTIST UNIVERSITY -UNDERGRAD	1
1997-98	CALIFORNIA BAPTIST UNIVERSITY -UNDERGRAD	1
1998-99	CALIFORNIA BAPTIST UNIVERSITY -UNDERGRAD	1
1999-00	CALIFORNIA BAPTIST UNIVERSITY -UNDERGRAD	1
2000-01	CALIFORNIA BAPTIST UNIVERSITY -UNDERGRAD	1
1996-97	CALIFORNIA INSTITUTE OF INTEGRAL STUDIES	1
1996-97	CALIFORNIA LUTHERAN UNIVERSITY	1
1999-00	CALIFORNIA LUTHERAN UNIVERSITY	1
1996-97	CALIFORNIA STATE UNIVERSITY - DOMINGUEZ	1
1996-97	CALIFORNIA STATE UNIVERSITY - FULLERTON	1
1997-98	CALIFORNIA STATE UNIVERSITY - FULLERTON	1
2000-01	CALIFORNIA STATE UNIVERSITY - FULLERTON	1
1997-98	CALIFORNIA STATE UNIVERSITY - LONG BEACH	2
1998-99	CALIFORNIA STATE UNIVERSITY - LONG BEACH	3
1997-98	CALIFORNIA STATE UNIVERSITY - NORTHRIDGE	3
1998-99	CALIFORNIA STATE UNIVERSITY - NORTHRIDGE	2
1996-97	CALIFORNIA STATE UNIVERSITY - SACRAMENTO	1
1997-98	CALIFORNIA STATE UNIVERSITY - SACRAMENTO	1
1998-99	CALIFORNIA STATE UNIVERSITY - SACRAMENTO	2
1997-98	CALVIN COLLEGE	1
1996-97	CAMPBELL UNIVERSITY	1
1997-98	CAMPBELL UNIVERSITY	1
2000-01	CAMPBELL UNIVERSITY	1
1997-98	CARDINAL STRITCH UNIVERSITY	1
1996-97	CARLETON COLLEGE	2
2000-01	CARLETON COLLEGE	1
1999-00	CARNEGIE MELLON UNIVERSITY	1
1996-97	CARROLL COLLEGE	3
1999-00	CARROLL COLLEGE	1
2000-01	CARROLL COLLEGE	1
1996-97	CASTLETON STATE COLLEGE	2
1997-98	CASTLETON STATE COLLEGE	1
1996-97	CEDARVILLE UNIVERSITY	1
1996-97	CENTRAL CONNECTICUT STATE UNIVERSITY	1
1997-98	CENTRAL MICHIGAN UNIVERSITY	1
1999-00	CENTRAL MICHIGAN UNIVERSITY	1
2000-01	CENTRAL MICHIGAN UNIVERSITY	1
1996-97	CENTRAL MISSOURI STATE UNIVERSITY	2
1996-97	CENTRAL WASHINGTON UNIVERSITY	1
1997-98	CENTRAL WASHINGTON UNIVERSITY	4
1998-99	CENTRAL WASHINGTON UNIVERSITY	5
1999-00	CENTRAL WASHINGTON UNIVERSITY	2
2000-01	CENTRAL WASHINGTON UNIVERSITY	4
1996-97	CHAPMAN UNIVERSITY-AC 1	1

School Year	College/University	TotalTxfrs
1999-00	CHAPMAN UNIVERSITY-AC 1	1
1998-99	CHAPMAN UNIVERSITY-AC 2	1
1996-97	CHAPMAN UNIVERSITY-AC 4	1
1997-98	CHAPMAN UNIVERSITY-ORANGE	1
1998-99	CHAPMAN UNIVERSITY-ORANGE	1
2000-01	CHAPMAN UNIVERSITY-ORANGE	1
1997-98	CHICAGO STATE UNIVERSITY	1
1997-98	CHUBB INSTITUTE - NEW YORK CITY	1
2000-01	CLAREMONT GRADUATE UNIVERSITY	1
1998-99	CLARK ATLANTA UNIVERSITY	1
1997-98	COASTAL CAROLINA UNIVERSITY	2
1998-99	COASTAL CAROLINA UNIVERSITY	1
1996-97	COLBY COLLEGE	1
1997-98	COLBY COLLEGE	1
1997-98	COLLEGE OF CHARLESTON	1
1998-99	COLLEGE OF THE ATLANTIC-MAINE	1
1996-97	COLORADO CHRISTIAN UNIVERSITY	1
1998-99	COLORADO CHRISTIAN UNIVERSITY	2
1997-98	COLORADO SCHOOL OF MINES	1
1996-97	COLORADO STATE UNIVERSITY	3
1997-98	COLORADO STATE UNIVERSITY	5
1998-99	COLORADO STATE UNIVERSITY	4
1999-00	COLORADO STATE UNIVERSITY	2
2000-01	COLORADO STATE UNIVERSITY	2
1997-98	COLUMBIA COLLEGE-EV SESSION	1
1999-00	COLUMBIA INTERNATIONAL UNIVERSITY	1
1997-98	COLUMBIA UNION COLLEGE	1
1996-97	CONCORDE CAREER COLLEGE - PORTLAND	16
1997-98	CONCORDE CAREER COLLEGE - PORTLAND	14
1998-99	CONCORDE CAREER COLLEGE - PORTLAND	14
1999-00	CONCORDE CAREER COLLEGE - PORTLAND	6
1997-98	CONCORDIA UNIVERSITY - IRVINE	1
1998-99	CONCORDIA UNIVERSITY - IRVINE	1
2000-01	CONCORDIA UNIVERSITY - IRVINE	1
1996-97	CONVERSE COLLEGE	1
1997-98	CORNELL COLLEGE	1
2000-01	CORNELL UNIVERSITY-AGRICULTURE/UNCLASSIF	1
1997-98	CRICHTON COLLEGE	1
1997-98	CRICHTON COLLEGE - DEGREE PROGRAMS	1
1998-99	CUNY BERNARD M. BARUCH COLLEGE	1
1996-97	CUNY CITY COLLEGE	1
1996-97	CUNY COLLEGE OF STATEN ISLAND	1
1998-99	CUNY COLLEGE OF STATEN ISLAND	2
1999-00	CUNY COLLEGE OF STATEN ISLAND	1

School Year	College/University	TotalTxfrs
1997-98	CUNY HUNTER COLLEGE	2
1999-00	CUNY HUNTER COLLEGE	1
1996-97	CUNY JOHN JAY COLLEGE OF CRIMINAL JUSTIC	1
1997-98	CUNY JOHN JAY COLLEGE OF CRIMINAL JUSTIC	1
1996-97	DEPAUL UNIVERSITY	1
1997-98	DEPAUL UNIVERSITY	1
1999-00	DEPAUL UNIVERSITY	1
2000-01	DEVRY UNIVERSITY - COLUMBUS	2
1998-99	DEVRY UNIVERSITY - FREEMONT	2
1997-98	DEVRY UNIVERSITY - PHOENIX	3
1999-00	DEVRY UNIVERSITY - PHOENIX	2
2000-01	DEVRY UNIVERSITY - PHOENIX	1
1996-97	DUQUESNE UNIVERSITY	1
1999-00	EAST CAROLINA UNIVERSITY	1
1996-97	EAST STROUDSBURG UNIVERSITY	1
1996-97	EASTERN ILLINOIS UNIVERSITY	1
1997-98	EASTERN KENTUCKY UNIVERSITY	1
1996-97	EASTERN MICHIGAN UNIVERSITY	1
1998-99	EASTERN NEW MEXICO UNIVERSITY	4
2000-01	EASTERN NEW MEXICO UNIVERSITY	2
1996-97	EASTERN WASHINGTON UNIVERSITY	5
1997-98	EASTERN WASHINGTON UNIVERSITY	4
1998-99	EASTERN WASHINGTON UNIVERSITY	3
1999-00	EASTERN WASHINGTON UNIVERSITY	2
2000-01	EASTERN WASHINGTON UNIVERSITY	2
1996-97	EMBRY RIDDLE AERONAUTICAL UNIV.-EXTENDED	9
1997-98	EMBRY RIDDLE AERONAUTICAL UNIV.-EXTENDED	9
1998-99	EMBRY RIDDLE AERONAUTICAL UNIV.-EXTENDED	6
2000-01	EMBRY RIDDLE AERONAUTICAL UNIV.-EXTENDED	1
1996-97	EMBRY RIDDLE AERONAUTICAL UNIVERSITY - A	7
1997-98	EMBRY RIDDLE AERONAUTICAL UNIVERSITY - A	7
1998-99	EMBRY RIDDLE AERONAUTICAL UNIVERSITY - A	1
1999-00	EMBRY RIDDLE AERONAUTICAL UNIVERSITY - A	2
2000-01	EMBRY RIDDLE AERONAUTICAL UNIVERSITY - A	2
1996-97	EMBRY-RIDDLE AERONAUTICAL UNIVERSITY - D	3
1997-98	EMBRY-RIDDLE AERONAUTICAL UNIVERSITY - D	1
1999-00	EMBRY-RIDDLE AERONAUTICAL UNIVERSITY - D	2
1998-99	EMERSON COLLEGE	4
1997-98	EMORY UNIVERSITY	2
1997-98	FAIRFIELD UNIVERSITY	1
1996-97	FAIRMONT STATE COLLEGE-TRADITIONAL	1
1998-99	FAIRMONT STATE COLLEGE-TRADITIONAL	1
1999-00	FAIRMONT STATE COLLEGE-TRADITIONAL	1
1998-99	FASHION INSTITUTE OF TECHNOLOGY	1

School Year	College/University	TotalTxfrs
2000-01	FASHION INSTITUTE OF TECHNOLOGY	1
1996-97	FERRIS STATE UNIVERSITY	1
1996-97	FLORIDA ATLANTIC UNIVERSITY	1
1996-97	FLORIDA INSTITUTE OF TECHNOLOGY	1
1999-00	FLORIDA INSTITUTE OF TECHNOLOGY	2
2000-01	FLORIDA INSTITUTE OF TECHNOLOGY	1
1996-97	FLORIDA STATE UNIVERSITY	1
1998-99	FLORIDA STATE UNIVERSITY	1
1997-98	FORT HAYS STATE UNIVERSITY	1
1997-98	FORT LEWIS COLLEGE	2
2000-01	FORT LEWIS COLLEGE	1
1997-98	FRIENDS UNIVERSITY	1
1996-97	GARDNER-WEBB UNIVERSITY	1
1997-98	GENEVA COLLEGE-TRADITIONAL	1
1996-97	GEORGE FOX UNIVERSITY	23
1997-98	GEORGE FOX UNIVERSITY	38
1998-99	GEORGE FOX UNIVERSITY	21
1999-00	GEORGE FOX UNIVERSITY	23
2000-01	GEORGE FOX UNIVERSITY	32
1996-97	GEORGE MASON UNIVERSITY	2
1997-98	GEORGE MASON UNIVERSITY	1
1998-99	GEORGE MASON UNIVERSITY	1
2000-01	GEORGE MASON UNIVERSITY	3
1998-99	GEORGE WASHINGTON LAW	1
1996-97	GEORGE WASHINGTON UNIVERSITY	1
1999-00	GEORGE WASHINGTON UNIVERSITY	1
1998-99	GEORGETOWN UNIVERSITY	1
2000-01	GEORGIA INSTITUTE OF TECHNOLOGY	1
2000-01	GEORGIA STATE UNIVERSITY	1
1997-98	GOLDEN GATE UNIVERSITY	1
1999-00	GOLDEN GATE UNIVERSITY	1
1996-97	GONZAGA UNIVERSITY	5
1997-98	GONZAGA UNIVERSITY	4
1998-99	GONZAGA UNIVERSITY	2
1999-00	GONZAGA UNIVERSITY	3
2000-01	GONZAGA UNIVERSITY	7
1998-99	GORDON COLLEGE	2
2000-01	GORDON COLLEGE	2
1999-00	GRACE COLLEGE	1
1996-97	GRAND CANYON UNIVERSITY-TRADITIONAL	2
1997-98	GRAND CANYON UNIVERSITY-TRADITIONAL	2
1998-99	GRAND CANYON UNIVERSITY-TRADITIONAL	2
1999-00	GRAND CANYON UNIVERSITY-TRADITIONAL	2
1996-97	GRAND VALLEY STATE UNIVERSITY	2

School Year	College/University	TotalTxfrs
1997-98	GREEN MOUNTAIN COLLEGE	1
1999-00	GREENVILLE COLLEGE	1
1999-00	HARVARD DIVINITY SCHOOL	1
1997-98	HARVARD UNIVERSITY	1
1997-98	HARVEY MUDD COLLEGE	1
1998-99	HARVEY MUDD COLLEGE	1
1997-98	HENDERSON STATE UNIVERSITY	1
1999-00	HOPE COLLEGE	1
2000-01	HOWARD UNIVERSITY	1
1996-97	HUMBOLDT STATE UNIVERSITY	1
1997-98	HUMBOLDT STATE UNIVERSITY	3
1998-99	HUMBOLDT STATE UNIVERSITY	1
1999-00	HUMBOLDT STATE UNIVERSITY	1
2000-01	HUMBOLDT STATE UNIVERSITY	3
1996-97	IDAHO STATE UNIVERSITY	1
1997-98	IDAHO STATE UNIVERSITY	6
1998-99	IDAHO STATE UNIVERSITY	5
1999-00	IDAHO STATE UNIVERSITY	6
2000-01	IDAHO STATE UNIVERSITY	1
1996-97	INDIANA WESLEYAN UNIVERSITY	1
1996-97	ITHACA COLLEGE	1
1997-98	ITT TECHNICAL INSTITUTE	1
2000-01	JACKSON STATE UNIVERSITY	1
1998-99	JACKSONVILLE UNIVERSITY	3
1999-00	JOHN BROWN UNIVERSITY	1
1996-97	JOHN MARSHALL LAW SCHOOL	1
1997-98	JOHNS HOPKINS UNIVERSITY - ARTS AND SCIE	1
1996-97	JOHNS HOPKINS UNIVERSITY - PEABODY CONSE	1
1997-98	JOHNS HOPKINS UNIVERSITY - SCHOOL OF ENG	1
1998-99	JOHNSON AND WALES UNIVERSITY-TRADITIONAL	1
1999-00	JOHNSON AND WALES UNIVERSITY-TRADITIONAL	1
2000-01	JOHNSON AND WALES UNIVERSITY-TRADITIONAL	1
1999-00	KANSAS STATE UNIVERSITY	1
1996-97	KEENE STATE COLLEGE	1
1996-97	KENT STATE UNIVERSITY	1
1998-99	KIRKSVILLE COLLEGE OF OSTEOPATHIC MEDICI	1
2000-01	LA SIERRA UNIVERSITY	2
2000-01	LAKE ERIE COLLEGE-UNDERGRADS	1
1998-99	LEE UNIVERSITY	1
1996-97	LEHIGH UNIVERSITY	1
1997-98	LEHIGH UNIVERSITY	1
1996-97	LEWIS & CLARK COLLEGE - GRAD SCHOOL	5
1997-98	LEWIS & CLARK COLLEGE - GRAD SCHOOL	9
1998-99	LEWIS & CLARK COLLEGE - GRAD SCHOOL	7

School Year	College/University	TotalTxfrs
2000-01	LEWIS & CLARK COLLEGE - GRAD SCHOOL	5
1996-97	LEWIS & CLARK COLLEGE OF ARTS & SCIENCES	9
1997-98	LEWIS & CLARK COLLEGE OF ARTS & SCIENCES	12
1998-99	LEWIS & CLARK COLLEGE OF ARTS & SCIENCES	18
1999-00	LEWIS & CLARK COLLEGE OF ARTS & SCIENCES	7
2000-01	LEWIS & CLARK COLLEGE OF ARTS & SCIENCES	5
1996-97	LEWIS & CLARK COLLEGE-NORTHWESTERN SCHOO	2
1998-99	LEWIS & CLARK COLLEGE-NORTHWESTERN SCHOO	4
2000-01	LEWIS & CLARK COLLEGE-NORTHWESTERN SCHOO	2
1996-97	LEWIS-CLARK STATE COLLEGE	1
1997-98	LEWIS-CLARK STATE COLLEGE	3
1999-00	LEWIS-CLARK STATE COLLEGE	3
2000-01	LEWIS-CLARK STATE COLLEGE	1
1997-98	LIBERTY UNIVERSITY	1
1999-00	LIBERTY UNIVERSITY	1
2000-01	LIBERTY UNIVERSITY	1
1999-00	LIFE CHIROPRACTIC COLLEGE, WEST	1
1997-98	LINDSEY WILSON COLLEGE	1
1996-97	LINFIELD COLLEGE	31
1997-98	LINFIELD COLLEGE	43
1998-99	LINFIELD COLLEGE	24
1999-00	LINFIELD COLLEGE	11
2000-01	LINFIELD COLLEGE	34
1996-97	LOMA LINDA UNIVERSITY	1
1997-98	LOMA LINDA UNIVERSITY	6
1998-99	LOMA LINDA UNIVERSITY	1
1999-00	LOMA LINDA UNIVERSITY	1
2000-01	LOMA LINDA UNIVERSITY	2
2000-01	LOYOLA MARYMOUNT UNIVERSITY	1
1996-97	MACALESTER COLLEGE	2
1996-97	MANHATTAN COLLEGE	1
1998-99	MANSFIELD UNIVERSITY	1
1996-97	MARLBORO COLLEGE	1
1999-00	MARQUETTE UNIVERSITY	1
1997-98	MASSACHUSETTS COLLEGE OF ART	1
1996-97	MASTER'S COLLEGE	1
1996-97	MCP HAHNEMANN UNIVERSITY	1
2000-01	MERCER UNIVERSITY MACON	1
1997-98	MESA STATE COLLEGE	2
1999-00	MESA STATE COLLEGE	1
1996-97	METROPOLITAN STATE COLLEGE	1
1997-98	METROPOLITAN STATE COLLEGE	1
1999-00	METROPOLITAN STATE COLLEGE	1
1996-97	METROPOLITAN STATE UNIVERSITY	3

School Year	College/University	TotalTxfrs
1998-99	MICHIGAN STATE UNIVERSITY	1
2000-01	MICHIGAN STATE UNIVERSITY	1
1997-98	MIDDLE TENNESSEE STATE UNIVERSITY	1
1996-97	MILLS COLLEGE	1
1997-98	MILLS COLLEGE	2
1998-99	MILLS COLLEGE	1
1999-00	MILLSAPS COLLEGE	1
1996-97	MINNESOTA STATE UNIVERSITY - MANKATO	1
1998-99	MINOT STATE UNIVERSITY	2
1998-99	MISSISSIPPI STATE UNIVERSITY	1
1999-00	MISSOURI SOUTHERN STATE COLLEGE	1
1996-97	MONTANA STATE UNIVERSITY - BOZEMAN	4
1997-98	MONTANA STATE UNIVERSITY - BOZEMAN	5
1998-99	MONTANA STATE UNIVERSITY - BOZEMAN	2
1999-00	MONTANA STATE UNIVERSITY - BOZEMAN	2
2000-01	MONTANA STATE UNIVERSITY - BOZEMAN	2
1996-97	MONTANA STATE UNIVERSITY-BILLINGS	2
1998-99	MONTANA STATE UNIVERSITY-BILLINGS	1
1998-99	MONTCLAIR STATE UNIVERSITY	1
1997-98	NAROPA INSTITUTE	1
1998-99	NAROPA INSTITUTE	2
1996-97	NATIONAL UNIVERSITY	1
1997-98	NATIONAL UNIVERSITY	2
1998-99	NATIONAL UNIVERSITY	1
2000-01	NATIONAL UNIVERSITY	1
1997-98	NAZARETH COLLEGE OF ROCHESTER	1
1997-98	NEW MEXICO STATE UNIVERSITY-MAIN	2
1998-99	NEW SCHOOL UNIVERSITY	2
1999-00	NEW SCHOOL UNIVERSITY	2
1996-97	NEW YORK UNIVERSITY	1
1997-98	NEW YORK UNIVERSITY	1
1998-99	NEW YORK UNIVERSITY	4
1999-00	NEW YORK UNIVERSITY	2
2000-01	NEW YORK UNIVERSITY	1
1998-99	NIAGARA UNIVERSITY	1
1999-00	NORTH CAROLINA A&T STATE UNIV	1
1996-97	NORTH CAROLINA STATE UNIVERSITY	1
1998-99	NORTH CENTRAL COLLEGE	1
1996-97	NORTH DAKOTA STATE UNIVERSITY	2
1997-98	NORTH DAKOTA STATE UNIVERSITY	1
1996-97	NORTH PARK COLLEGE	1
1996-97	NORTHERN ILLINOIS UNIVERSITY	1
1998-99	NORTHLAND COLLEGE	1
2000-01	NORTHWEST CHRISTIAN COLLEGE - MSTRS ARTS	1

School Year	College/University	TotalTxfrs
1996-97	NORTHWEST CHRISTIAN COLLEGE-DEGREE COMPL	2
1997-98	NORTHWEST CHRISTIAN COLLEGE-MASTERS 2	1
1998-99	NORTHWEST CHRISTIAN COLLEGE-TRADITIONAL	1
1999-00	NORTHWEST CHRISTIAN COLLEGE-TRADITIONAL	1
2000-01	NORTHWEST CHRISTIAN COLLEGE-TRADITIONAL	1
1997-98	NORTHWEST NAZARENE COLLEGE	2
1999-00	NORTHWEST NAZARENE COLLEGE	4
2000-01	NORTHWEST NAZARENE COLLEGE	9
1996-97	NORTHWESTERN UNIVERSITY	1
1997-98	NORTHWESTERN UNIVERSITY	1
1998-99	NORTHWESTERN UNIVERSITY	3
1999-00	NORTHWESTERN UNIVERSITY	1
2000-01	NORWICH UNIVERSITY-NON TRADITIONAL	1
1999-00	NOTRE DAME DE NAMUR UNIVERSITY	1
1996-97	NOVA SOUTHEASTERN UNIVERSITY	1
1998-99	NOVA SOUTHEASTERN UNIVERSITY	1
2000-01	NOVA SOUTHEASTERN UNIVERSITY	1
1997-98	OCCIDENTAL COLLEGE	2
1996-97	OHIO STATE UNIVERSITY	1
1997-98	OHIO STATE UNIVERSITY	1
1998-99	OHIO STATE UNIVERSITY	1
1999-00	OHIO STATE UNIVERSITY	2
1997-98	OHIO UNIVERSITY	1
1997-98	OKLAHOMA CHRISTIAN UNIVERSITY	1
1999-00	OKLAHOMA CHRISTIAN UNIVERSITY	2
1996-97	OKLAHOMA STATE UNIVERSITY - STILLWATER	1
1998-99	OKLAHOMA STATE UNIVERSITY - STILLWATER	1
1996-97	OLD DOMINION UNIVERSITY	1
1997-98	OLD DOMINION UNIVERSITY	1
1999-00	OLIVET NAZARENE UNIVERSITY UG	1
1999-00	ORAL ROBERTS UNIVERSITY	1
1996-97	OREGON STATE UNIVERSITY	77
1997-98	OREGON STATE UNIVERSITY	116
1998-99	OREGON STATE UNIVERSITY	173
1999-00	OREGON STATE UNIVERSITY	126
2000-01	OREGON STATE UNIVERSITY	257
1997-98	PACE UNIVERSITY - PLEASANTVILLE	1
1997-98	PACE UNIVERSITY- WHITE PLAINS	1
1996-97	PACIFIC LUTHERAN UNIVERSITY	2
1997-98	PACIFIC LUTHERAN UNIVERSITY	2
1998-99	PACIFIC LUTHERAN UNIVERSITY	4
1999-00	PACIFIC LUTHERAN UNIVERSITY	3
2000-01	PACIFIC LUTHERAN UNIVERSITY	11
1997-98	PACIFIC UNION COLLEGE	1

School Year	College/University	TotalTxfrs
1998-99	PACIFIC UNION COLLEGE	1
2000-01	PACIFIC UNION COLLEGE	2
1996-97	PACIFIC UNIVERSITY	6
1997-98	PACIFIC UNIVERSITY	12
1998-99	PACIFIC UNIVERSITY	11
1999-00	PACIFIC UNIVERSITY	7
2000-01	PACIFIC UNIVERSITY	18
1997-98	PALM BEACH ATLANTIC COLLEGE	1
1997-98	PALMER COLLEGE OF CHIROPRACTIC	1
1998-99	PALMER COLLEGE OF CHIROPRACTIC	2
1996-97	PARK UNIVERSITY	1
1997-98	PARK UNIVERSITY	1
1996-97	PENNSYLVANIA STATE UNIVERSITY	2
1997-98	PENNSYLVANIA STATE UNIVERSITY	3
1998-99	PENNSYLVANIA STATE UNIVERSITY	1
2000-01	PENNSYLVANIA STATE UNIVERSITY	1
1996-97	PEPPERDINE UNIVERSITY	5
1997-98	PEPPERDINE UNIVERSITY	1
1998-99	PEPPERDINE UNIVERSITY	5
1999-00	PEPPERDINE UNIVERSITY	1
2000-01	PEPPERDINE UNIVERSITY	1
1998-99	PEPPERDINE UNIVERSITY - LAW SCHOOL	1
1997-98	PHILADELPHIA UNIVERSITY	1
1997-98	PLYMOUTH STATE COLLEGE	2
1997-98	POLYTECHNIC UNIVERSITY, BROOKLYN	1
1998-99	POMONA COLLEGE	1
1996-97	PORTLAND STATE UNIVERSITY	474
1997-98	PORTLAND STATE UNIVERSITY	560
1998-99	PORTLAND STATE UNIVERSITY	560
1999-00	PORTLAND STATE UNIVERSITY	378
2000-01	PORTLAND STATE UNIVERSITY	456
1998-99	PRATT INSTITUTE	1
1998-99	PRESCOTT COLLEGE-RESIDENT DEGREE PROGRAM	1
2000-01	PRESCOTT COLLEGE-RESIDENT DEGREE PROGRAM	1
1998-99	REGENT UNIVERSITY	1
2000-01	REGENT UNIVERSITY	1
2000-01	REGIS UNIVERSITY-SEMESTERS	2
1996-97	RHODE ISLAND SCHOOL OF DESIGN	1
1998-99	RIPON COLLEGE	1
1997-98	ROCKY MOUNTAIN COLLEGE	1
1996-97	ROLLINS COLLEGE	1
1998-99	SAINT LOUIS UNIVERSITY	1

School Year	College/University	TotalTxfrs
1996-97	SAINT MICHAELS COLLEGE	1
1996-97	SALEM STATE COLLEGE	5
1998-99	SAM HOUSTON STATE UNIVERSITY	1
1999-00	SAMUEL MERRITT COLLEGE	1
1996-97	SAN DIEGO STATE UNIVERSITY	4
1997-98	SAN DIEGO STATE UNIVERSITY	5
1998-99	SAN DIEGO STATE UNIVERSITY	2
1998-99	SAN FRANCISCO STATE UNIVERSITY	2
1996-97	SAN JOSE STATE UNIVERSITY	2
1998-99	SAN JOSE STATE UNIVERSITY	3
2000-01	SAN JOSE STATE UNIVERSITY	2
1997-98	SAN JOSE STATE UNIVERSITY SPECIAL SESSIO	1
1996-97	SANTA CLARA UNIVERSITY	2
1997-98	SANTA CLARA UNIVERSITY	1
1998-99	SANTA CLARA UNIVERSITY	3
1999-00	SARAH LAWRENCE COLLEGE	1
2000-01	SCHOOL OF THE ART INSTITUTE OF CHICAGO	1
1996-97	SEATTLE PACIFIC UNIVERSITY	2
1997-98	SEATTLE PACIFIC UNIVERSITY	9
1998-99	SEATTLE PACIFIC UNIVERSITY	6
1999-00	SEATTLE PACIFIC UNIVERSITY	5
2000-01	SEATTLE PACIFIC UNIVERSITY	13
1996-97	SEATTLE UNIVERSITY	1
1997-98	SEATTLE UNIVERSITY	1
1998-99	SEATTLE UNIVERSITY	1
1996-97	SIMPSON COLLEGE	3
1997-98	SIMPSON COLLEGE	1
1999-00	SIMPSON COLLEGE	2
2000-01	SIMPSON COLLEGE	1
2000-01	SLIPPERY ROCK UNIVERSITY	1
1997-98	SMITH COLLEGE	1
1999-00	SOUTHAMPTON COLLEGE OF LONG ISLAND UNIVE	1
1997-98	SOUTHEASTERN LOUISIANA UNIVERSITY	1
2000-01	SOUTHERN ADVENTIST UNIVERSITY	2
1996-97	SOUTHERN ILLINOIS UNIVERSITY AT CARBONDA	3
1997-98	SOUTHERN ILLINOIS UNIVERSITY AT CARBONDA	1
1998-99	SOUTHERN ILLINOIS UNIVERSITY AT CARBONDA	1
1996-97	SOUTHERN NEW HAMPSHIRE UNIVERSITY- UNGRA	1
1997-98	SOUTHERN NEW HAMPSHIRE UNIVERSITY- UNGRA	1
1996-97	SOUTHERN OREGON UNIVERSITY	20
1997-98	SOUTHERN OREGON UNIVERSITY	37
1998-99	SOUTHERN OREGON UNIVERSITY	27
1999-00	SOUTHERN OREGON UNIVERSITY	14
2000-01	SOUTHERN OREGON UNIVERSITY	21

School Year	College/University	TotalTxfrs
1996-97	SOUTHERN UTAH UNIVERSITY	3
1997-98	SOUTHERN UTAH UNIVERSITY	1
1997-98	SOUTHWESTERN ASSEMBLIES OF GOD UNIVERSIT	1
1998-99	SOUTHWESTERN ASSEMBLIES OF GOD UNIVERSIT	1
1999-00	SOUTHWESTERN ASSEMBLIES OF GOD UNIVERSIT	1
1996-97	ST CLOUD STATE UNIVERSITY	1
2000-01	ST JOHNS UNIVERSITY	1
1998-99	ST LAWRENCE UNIVERSITY	1
2000-01	ST LAWRENCE UNIVERSITY	1
1997-98	ST MARY'S COLLEGE OF CALIFORNIA	1
1997-98	ST MARYS UNIV-WINONA	1
1999-00	ST MARYS UNIV-WINONA	1
1997-98	ST PETERSBURG COLLEGE	1
1998-99	ST PETERSBURG COLLEGE	1
1996-97	ST. JOSEPH'S UNIVERSITY	1
1997-98	STANFORD UNIVERSITY	1
2000-01	STANFORD UNIVERSITY	2
2000-01	STATE UNIVERSITY OF WEST GEORGIA	2
1999-00	STEPHENS COLLEGE	1
2000-01	STEPHENS COLLEGE	1
1997-98	SUL ROSS STATE UNIVERSITY	1
1997-98	SUNY BUFFALO	1
1998-99	SUNY BUFFALO	2
1997-98	SUNY COLLEGE AT BUFFALO	1
1996-97	SUNY COLLEGE AT PURCHASE	1
1996-97	SYRACUSE UNIVERSITY	2
1997-98	SYRACUSE UNIVERSITY	1
1998-99	SYRACUSE UNIVERSITY	1
2000-01	SYRACUSE UNIVERSITY	1
2000-01	TEIKYO POST UNIVERSITY	1
1998-99	TEMPLE UNIVERSITY	1
2000-01	TENNESSEE TECHNOLOGICAL UNIVERSITY	1
1996-97	TEXAS A&M UNIVERSITY	1
1998-99	TEXAS A&M UNIVERSITY - GALVESTON	1
1997-98	TEXAS CHRISTIAN UNIVERSITY	1
1999-00	TEXAS CHRISTIAN UNIVERSITY	1
2000-01	TEXAS CHRISTIAN UNIVERSITY	1
2000-01	TEXAS LUTHERAN UNIV	2
1998-99	TEXAS TECH UNIVERSITY, LUBBOCK	1
1996-97	THE EVERGREEN STATE COLLEGE	2
1997-98	THE EVERGREEN STATE COLLEGE	1
1999-00	THE EVERGREEN STATE COLLEGE	2
2000-01	THE EVERGREEN STATE COLLEGE	1
1997-98	THE UNIVERSITY OF LOUISIANA - MONROE	1

School Year	College/University	TotalTxfrs
1997-98	THE UNIVERSITY OF MEMPHIS	1
1998-99	THE UNIVERSITY OF MEMPHIS	1
1999-00	THOMAS AQUINAS COLLEGE	1
1997-98	THOMAS JEFFERSON UNIVERSITY MEDICAL	1
1996-97	TROY STATE UNIVERSITY	1
1996-97	TROY STATE UNIVERSITY - CUBA	1
1996-97	TROY STATE UNIVERSITY - DAVIS-MONTHAN AF	1
1996-97	TROY STATE UNIVERSITY, DOTHAN	1
1996-97	TUFTS UNIVERSITY	1
1999-00	TULANE UNIVERSITY	1
1998-99	TUSKEGEE UNIVERSITY	1
1996-97	U OF SOUTHERN COLORADO	2
1998-99	U OF SOUTHERN COLORADO	1
1996-97	UNIVERSITY OF ALABAMA, BIRMINGHAM-TRADIT	1
1997-98	UNIVERSITY OF ALABAMA, HUNTSVILLE	1
1996-97	UNIVERSITY OF ALASKA, ANCHORAGE	9
1997-98	UNIVERSITY OF ALASKA, ANCHORAGE	7
1998-99	UNIVERSITY OF ALASKA, ANCHORAGE	6
1999-00	UNIVERSITY OF ALASKA, ANCHORAGE	3
2000-01	UNIVERSITY OF ALASKA, ANCHORAGE	4
1996-97	UNIVERSITY OF ALASKA, FAIRBANKS	3
1997-98	UNIVERSITY OF ALASKA, FAIRBANKS	3
1998-99	UNIVERSITY OF ALASKA, FAIRBANKS	5
1999-00	UNIVERSITY OF ALASKA, FAIRBANKS	1
1996-97	UNIVERSITY OF ALASKA, SOUTHEAST	4
1997-98	UNIVERSITY OF ALASKA, SOUTHEAST	6
1998-99	UNIVERSITY OF ALASKA, SOUTHEAST	3
1999-00	UNIVERSITY OF ALASKA, SOUTHEAST	2
2000-01	UNIVERSITY OF ALASKA, SOUTHEAST	2
2000-01	UNIVERSITY OF ARKANSAS AT LITTLE ROCK	1
1997-98	UNIVERSITY OF CALIFORNIA-BERKELEY	2
2000-01	UNIVERSITY OF CALIFORNIA-BERKELEY	1
1996-97	UNIVERSITY OF CALIFORNIA-DAVIS	1
2000-01	UNIVERSITY OF CALIFORNIA-DAVIS	1
1997-98	UNIVERSITY OF CALIFORNIA-EXTENSION	1
1998-99	UNIVERSITY OF CALIFORNIA-EXTENSION	1
1997-98	UNIVERSITY OF CALIFORNIA-IRVINE	2
1999-00	UNIVERSITY OF CALIFORNIA-IRVINE	1
2000-01	UNIVERSITY OF CALIFORNIA-IRVINE	1
1997-98	UNIVERSITY OF CALIFORNIA-LOS ANGELES	2
1998-99	UNIVERSITY OF CALIFORNIA-LOS ANGELES	2
1997-98	UNIVERSITY OF CALIFORNIA-SANTA BARBARA	1
1999-00	UNIVERSITY OF CALIFORNIA-SANTA BARBARA	1
1996-97	UNIVERSITY OF CALIFORNIA-SANTA CRUZ	1

School Year	College/University	TotalTxfrs
1997-98	UNIVERSITY OF CALIFORNIA-SANTA CRUZ	2
1999-00	UNIVERSITY OF CALIFORNIA-SANTA CRUZ	1
1996-97	UNIVERSITY OF CENTRAL ARKANSAS	1
2000-01	UNIVERSITY OF CENTRAL ARKANSAS	1
1996-97	UNIVERSITY OF CENTRAL FLORIDA	1
1997-98	UNIVERSITY OF CENTRAL OKLAHOMA	1
1999-00	UNIVERSITY OF CENTRAL OKLAHOMA	1
1998-99	UNIVERSITY OF CHICAGO	1
1997-98	UNIVERSITY OF CINCINNATI-QUARTERS SYSTEM	1
1996-97	UNIVERSITY OF COLORADO AT BOULDER	2
1997-98	UNIVERSITY OF COLORADO AT BOULDER	2
1998-99	UNIVERSITY OF COLORADO AT BOULDER	1
2000-01	UNIVERSITY OF COLORADO AT BOULDER	3
1996-97	UNIVERSITY OF COLORADO AT DENVER	1
1997-98	UNIVERSITY OF COLORADO AT DENVER	1
1998-99	UNIVERSITY OF COLORADO AT DENVER	1
1996-97	UNIVERSITY OF DENVER, COLORADO	1
1997-98	UNIVERSITY OF DENVER, COLORADO	1
1998-99	UNIVERSITY OF DENVER, COLORADO	1
2000-01	UNIVERSITY OF FINDLAY	1
1997-98	UNIVERSITY OF FLORIDA	1
1998-99	UNIVERSITY OF GEORGIA	2
1999-00	UNIVERSITY OF GEORGIA	1
1996-97	UNIVERSITY OF HAWAII AT HILO	1
1997-98	UNIVERSITY OF HAWAII AT HILO	1
1998-99	UNIVERSITY OF HAWAII AT HILO	2
2000-01	UNIVERSITY OF HAWAII AT HILO	2
1996-97	UNIVERSITY OF HAWAII AT MANOA	3
1997-98	UNIVERSITY OF HAWAII AT MANOA	2
1998-99	UNIVERSITY OF HAWAII AT MANOA	3
2000-01	UNIVERSITY OF HAWAII AT MANOA	2
1997-98	UNIVERSITY OF HAWAII, WEST OAHU	1
1996-97	UNIVERSITY OF IDAHO	13
1997-98	UNIVERSITY OF IDAHO	1
1998-99	UNIVERSITY OF IDAHO	10
1999-00	UNIVERSITY OF IDAHO	3
2000-01	UNIVERSITY OF IDAHO	5
1996-97	UNIVERSITY OF ILLINOIS @ URBANA	2
1996-97	UNIVERSITY OF IOWA	1
1998-99	UNIVERSITY OF MAINE, AUGUSTA	1
1997-98	UNIVERSITY OF MAINE, FARMINGTON	1
1996-97	UNIVERSITY OF MAINE, ORONO	1
1999-00	UNIVERSITY OF MARY	1
1996-97	UNIVERSITY OF MARYLAND, COLLEGE PARK	2

School Year	College/University	TotalTxfrs
1997-98	UNIVERSITY OF MARYLAND, COLLEGE PARK	1
1999-00	UNIVERSITY OF MARYLAND, COLLEGE PARK	1
1998-99	UNIVERSITY OF MASSACHUSETTS @ DARTMOUTH	1
1996-97	UNIVERSITY OF MASSACHUSETTS AT AMHERST	1
1997-98	UNIVERSITY OF MASSACHUSETTS AT AMHERST	1
1998-99	UNIVERSITY OF MASSACHUSETTS AT AMHERST	1
1996-97	UNIVERSITY OF MASSACHUSETTS BOSTON	1
1998-99	UNIVERSITY OF MASSACHUSETTS BOSTON	2
1997-98	UNIVERSITY OF MIAMI	1
1997-98	UNIVERSITY OF MICHIGAN-CENTRAL CAMPUS	1
1998-99	UNIVERSITY OF MICHIGAN-CENTRAL CAMPUS	1
2000-01	UNIVERSITY OF MICHIGAN-CENTRAL CAMPUS	1
1996-97	UNIVERSITY OF MINNESOTA-TWIN CITIES	5
1997-98	UNIVERSITY OF MINNESOTA-TWIN CITIES	3
2000-01	UNIVERSITY OF MINNESOTA-TWIN CITIES	1
1996-97	UNIVERSITY OF MISSISSIPPI	1
1997-98	UNIVERSITY OF MISSISSIPPI	1
2000-01	UNIVERSITY OF MISSOURI-COLUMBIA	1
1998-99	UNIVERSITY OF MISSOURI-KANSAS CITY	1
1996-97	UNIVERSITY OF MONTANA	4
1997-98	UNIVERSITY OF MONTANA	5
1998-99	UNIVERSITY OF MONTANA	4
1999-00	UNIVERSITY OF MONTANA	2
2000-01	UNIVERSITY OF MONTANA	3
1997-98	UNIVERSITY OF MONTANA - WESTERN	1
1998-99	UNIVERSITY OF MONTANA - WESTERN	1
1996-97	UNIVERSITY OF NEBRASKA AT OMAHA	2
1996-97	UNIVERSITY OF NEVADA LAS VEGAS	2
1997-98	UNIVERSITY OF NEVADA LAS VEGAS	4
1998-99	UNIVERSITY OF NEVADA LAS VEGAS	6
2000-01	UNIVERSITY OF NEVADA LAS VEGAS	9
1996-97	UNIVERSITY OF NEVADA-RENO	3
1997-98	UNIVERSITY OF NEVADA-RENO	1
1998-99	UNIVERSITY OF NEVADA-RENO	5
1999-00	UNIVERSITY OF NEVADA-RENO	2
2000-01	UNIVERSITY OF NEVADA-RENO	3
1996-97	UNIVERSITY OF NEW HAMPSHIRE	1
1999-00	UNIVERSITY OF NEW HAMPSHIRE	1
1997-98	UNIVERSITY OF NEW MEXICO	1
1998-99	UNIVERSITY OF NEW MEXICO	1
1999-00	UNIVERSITY OF NEW MEXICO	1
1997-98	UNIVERSITY OF NEW ORLEANS	3
1998-99	UNIVERSITY OF NEW ORLEANS	1
1997-98	UNIVERSITY OF NORTH ALABAMA	1

School Year	College/University	TotalTxfrs
1996-97	UNIVERSITY OF NORTH CAROLINA - CHARLOTTE	1
1998-99	UNIVERSITY OF NORTH CAROLINA - CHARLOTTE	2
1997-98	UNIVERSITY OF NORTH CAROLINA-CHAPEL HILL	3
1996-97	UNIVERSITY OF NORTH DAKOTA	6
1997-98	UNIVERSITY OF NORTH DAKOTA	2
1998-99	UNIVERSITY OF NORTH DAKOTA	4
1999-00	UNIVERSITY OF NORTH DAKOTA	3
1998-99	UNIVERSITY OF NORTH FLORIDA	2
1996-97	UNIVERSITY OF NORTHERN COLORADO	2
1997-98	UNIVERSITY OF NORTHERN COLORADO	1
1999-00	UNIVERSITY OF NORTHERN COLORADO	1
2000-01	UNIVERSITY OF NORTHERN COLORADO	2
1998-99	UNIVERSITY OF NORTHERN IOWA	5
1996-97	UNIVERSITY OF OREGON, LAW SCHOOL	1
1997-98	UNIVERSITY OF OREGON, LAW SCHOOL	1
1998-99	UNIVERSITY OF OREGON, LAW SCHOOL	1
2000-01	UNIVERSITY OF OREGON, LAW SCHOOL	1
1996-97	UNIVERSITY OF OREGON, MAIN CAMPUS	114
1997-98	UNIVERSITY OF OREGON, MAIN CAMPUS	109
1998-99	UNIVERSITY OF OREGON, MAIN CAMPUS	113
1999-00	UNIVERSITY OF OREGON, MAIN CAMPUS	110
2000-01	UNIVERSITY OF OREGON, MAIN CAMPUS	114
1996-97	UNIVERSITY OF PHOENIX	40
1997-98	UNIVERSITY OF PHOENIX	46
1998-99	UNIVERSITY OF PHOENIX	54
1999-00	UNIVERSITY OF PHOENIX	24
2000-01	UNIVERSITY OF PHOENIX	28
1998-99	UNIVERSITY OF PITTSBURGH	1
1996-97	UNIVERSITY OF PORTLAND	22
1997-98	UNIVERSITY OF PORTLAND	43
1998-99	UNIVERSITY OF PORTLAND	58
1999-00	UNIVERSITY OF PORTLAND	31
2000-01	UNIVERSITY OF PORTLAND	36
1996-97	UNIVERSITY OF PUGET SOUND	4
1998-99	UNIVERSITY OF PUGET SOUND	1
1999-00	UNIVERSITY OF PUGET SOUND	3
2000-01	UNIVERSITY OF PUGET SOUND	5
1997-98	UNIVERSITY OF REDLANDS	4
1998-99	UNIVERSITY OF REDLANDS	1
1996-97	UNIVERSITY OF REDLANDS - DEGREE SEEKING	1
2000-01	UNIVERSITY OF REDLANDS - DEGREE SEEKING	1
1999-00	UNIVERSITY OF SAN FRANCISCO	1
1998-99	UNIVERSITY OF SOUTH CAROLINA AT SPARTANS	2
1997-98	UNIVERSITY OF SOUTH DAKOTA	1

School Year	College/University	TotalTxfrs
1996-97	UNIVERSITY OF SOUTHERN CALIFORNIA	1
1997-98	UNIVERSITY OF SOUTHERN CALIFORNIA	2
1998-99	UNIVERSITY OF SOUTHERN CALIFORNIA	3
2000-01	UNIVERSITY OF SOUTHERN CALIFORNIA	4
1996-97	UNIVERSITY OF SOUTHERN INDIANA	1
1996-97	UNIVERSITY OF SOUTHERN MAINE	1
1998-99	UNIVERSITY OF SOUTHERN MAINE	1
2000-01	UNIVERSITY OF SOUTHERN MISSISSIPPI-GULF	1
2000-01	UNIVERSITY OF ST THOMAS	1
1998-99	UNIVERSITY OF ST. FRANCIS	1
1996-97	UNIVERSITY OF TENNESSEE - MARTIN	1
1996-97	UNIVERSITY OF TEXAS, SAN ANTONIO	1
1997-98	UNIVERSITY OF TEXAS, SAN ANTONIO	1
1998-99	UNIVERSITY OF THE INCARNATE WORD GRAD1&2	1
1996-97	UNIVERSITY OF THE PACIFIC-PHARMACY	1
1996-97	UNIVERSITY OF UTAH	1
1997-98	UNIVERSITY OF UTAH	4
1998-99	UNIVERSITY OF UTAH	3
1999-00	UNIVERSITY OF UTAH	2
2000-01	UNIVERSITY OF UTAH	2
1996-97	UNIVERSITY OF VERMONT & STATE AGRICULTUR	3
1999-00	UNIVERSITY OF VERMONT & STATE AGRICULTUR	3
1996-97	UNIVERSITY OF VIRGINIA	1
1996-97	UNIVERSITY OF WASHINGTON, SEATTLE	4
1997-98	UNIVERSITY OF WASHINGTON, SEATTLE	11
1998-99	UNIVERSITY OF WASHINGTON, SEATTLE	8
1999-00	UNIVERSITY OF WASHINGTON, SEATTLE	4
2000-01	UNIVERSITY OF WASHINGTON, SEATTLE	12
1996-97	UNIVERSITY OF WEST FLORIDA	1
1997-98	UNIVERSITY OF WEST FLORIDA	1
1998-99	UNIVERSITY OF WISCONSIN - WHITEWATER	1
1997-98	UNIVERSITY OF WISCONSIN @ GREEN BAY	1
1996-97	UNIVERSITY OF WISCONSIN-EAU CLAIRE	1
1996-97	UNIVERSITY OF WISCONSIN-MADISON	2
1998-99	UNIVERSITY OF WISCONSIN-MADISON	1
2000-01	UNIVERSITY OF WISCONSIN-MADISON	1
1997-98	UNIVERSITY OF WISCONSIN-STEVENSON POINT	1
1997-98	UNIVERSITY OF WYOMING	1
2000-01	UNIVERSITY OF WYOMING	2
1999-00	UPPER IOWA UNIVERSITY	1
1996-97	UTAH STATE UNIVERSITY	6
1997-98	UTAH STATE UNIVERSITY	2
1998-99	UTAH STATE UNIVERSITY	1
1999-00	UTAH STATE UNIVERSITY	1

School Year	College/University	TotalTxfrs
2000-01	UTAH STATE UNIVERSITY	3
1996-97	UTAH VALLEY STATE COLLEGE	4
1997-98	UTAH VALLEY STATE COLLEGE	5
1998-99	UTAH VALLEY STATE COLLEGE	6
1999-00	UTAH VALLEY STATE COLLEGE	7
2000-01	UTAH VALLEY STATE COLLEGE	4
1999-00	VALPARAISO UNIVERSITY	1
1997-98	VANDERBILT UNIVERSITY	2
1998-99	VILLANOVA UNIVERSITY	1
1996-97	VIRGINIA COMMONWEALTH UNIVERSITY	1
1996-97	VIRGINIA POLYTECH AND STATE UNIV	2
1997-98	VIRGINIA POLYTECH AND STATE UNIV	1
1998-99	VIRGINIA POLYTECH AND STATE UNIV	1
2000-01	VIRGINIA POLYTECH AND STATE UNIV	1
1996-97	WALLA WALLA COLLEGE	7
1997-98	WALLA WALLA COLLEGE	18
1998-99	WALLA WALLA COLLEGE	21
1999-00	WALLA WALLA COLLEGE	8
2000-01	WALLA WALLA COLLEGE	29
1996-97	WARNER PACIFIC COLLEGE	24
1997-98	WARNER PACIFIC COLLEGE	26
1998-99	WARNER PACIFIC COLLEGE	30
1999-00	WARNER PACIFIC COLLEGE	19
2000-01	WARNER PACIFIC COLLEGE	27
1996-97	WARNER PACIFIC COLLEGE-EVENING DEGREE	11
1997-98	WARNER PACIFIC COLLEGE-EVENING DEGREE	22
1998-99	WARNER PACIFIC COLLEGE-EVENING DEGREE	11
1999-00	WARNER PACIFIC COLLEGE-EVENING DEGREE	8
2000-01	WARNER PACIFIC COLLEGE-EVENING DEGREE	15
1997-98	WASHBURN UNIVERSITY OF TOPEKA	1
1996-97	WASHINGTON STATE UNIVERSITY	30
1997-98	WASHINGTON STATE UNIVERSITY	42
1998-99	WASHINGTON STATE UNIVERSITY	36
1999-00	WASHINGTON STATE UNIVERSITY	21
2000-01	WASHINGTON STATE UNIVERSITY	27
1996-97	WASHINGTON UNIVERSITY	1
1997-98	WASHINGTON UNIVERSITY	2
1998-99	WASHINGTON UNIVERSITY	1
1998-99	WAYLAND BAPTIST UNIVERSITY - MAIN CAMPUS	1
1996-97	WAYLAND BAPTIST UNIVERSITY-EXTERNAL CAMP	1
1999-00	WAYLAND BAPTIST UNIVERSITY-EXTERNAL CAMP	1
1997-98	WEBER STATE UNIVERSITY	1
1996-97	WEBSTER UNIVERSITY GRADS	2
1997-98	WEBSTER UNIVERSITY GRADS	1

School Year	College/University	TotalTxfrs
1997-98	WELLESLEY COLLEGE	1
1998-99	WELLESLEY COLLEGE	1
1996-97	WESTERN BAPTIST COLLEGE	13
1997-98	WESTERN BAPTIST COLLEGE	10
1998-99	WESTERN BAPTIST COLLEGE	8
1999-00	WESTERN BAPTIST COLLEGE	2
2000-01	WESTERN BAPTIST COLLEGE	2
1997-98	WESTERN ILLINOIS UNIVERSITY	2
1996-97	WESTERN OREGON UNIVERSITY	63
1997-98	WESTERN OREGON UNIVERSITY	60
1998-99	WESTERN OREGON UNIVERSITY	61
1999-00	WESTERN OREGON UNIVERSITY	54
2000-01	WESTERN OREGON UNIVERSITY	47
1996-97	WESTERN STATE COLLEGE OF COLORADO	2
2000-01	WESTERN STATE COLLEGE OF COLORADO	1
1996-97	WESTERN WASHINGTON UNIVERSITY	4
1997-98	WESTERN WASHINGTON UNIVERSITY	5
1998-99	WESTERN WASHINGTON UNIVERSITY	4
1999-00	WESTERN WASHINGTON UNIVERSITY	2
2000-01	WESTERN WASHINGTON UNIVERSITY	1
1999-00	WESTMONT COLLEGE	2
2000-01	WESTMONT COLLEGE	1
1996-97	WHEATON COLLEGE	3
1998-99	WHEATON COLLEGE	1
1999-00	WHEATON COLLEGE	1
2000-01	WHEATON COLLEGE	2
1996-97	WHITMAN COLLEGE	2
1998-99	WHITMAN COLLEGE	1
1999-00	WHITMAN COLLEGE	1
2000-01	WHITMAN COLLEGE	2
1998-99	WHITTIER COLLEGE	1
1996-97	WHITWORTH COLLEGE	1
1997-98	WHITWORTH COLLEGE	3
1998-99	WHITWORTH COLLEGE	3
1999-00	WHITWORTH COLLEGE	1
2000-01	WHITWORTH COLLEGE	3
1997-98	WICHITA STATE UNIVERSITY	1
1996-97	WILLAMETTE UNIVERSITY	14
1997-98	WILLAMETTE UNIVERSITY	8
1998-99	WILLAMETTE UNIVERSITY	11
1999-00	WILLAMETTE UNIVERSITY	9
2000-01	WILLAMETTE UNIVERSITY	8
1996-97	WILLIAM PATERSON UNIVERSITY OF NEW JERSE	1
1997-98	WILLIAM PATERSON UNIVERSITY OF NEW JERSE	3

School Year	College/University	TotalTxfrs
1997-98	WINTHROP UNIVERSITY	2
1999-00	WOODBURY UNIVERSITY	1
2000-01	WORCESTER STATE COLLEGE	1
1996-97	WRIGHT STATE UNIVERSITY	1
1998-99	XAVIER UNIVERSITY	1
1997-98	YALE UNIVERSITY	1
	TOTAL	7005

Appendix III

Transfer Activity by MHCC Major by Year

Year	Major	MajorTitle	Majors	NonReturning	StartedBetween	<2YearTxfr	2YearTxfr	2Year%	4YearTxfr	4Year%
1996-97	LANT	Anthropology Transfer	3	3	Fall Of 1996 And Fall 2002	0	1	33.3%	2	66.7%
1996-97	LAR	Art Transfer	37	32	Fall Of 1996 And Fall 2002	0	8	25.0%	5	15.6%
1996-97	LARE	Art Education Transfer	3	3	Fall Of 1996 And Fall 2002	0	0	0.0%	2	66.7%
1996-97	LBI	Bio,Ent,Mic,Bot,Zoo Tran	24	24	Fall Of 1996 And Fall 2002	0	5	20.8%	10	41.7%
1996-97	LBIC	Biochem,Biophy Transfer	2	2	Fall Of 1996 And Fall 2002	0	0	0.0%	1	50.0%
1996-97	LBUA	Business Admin Transfer	202	174	Fall Of 1996 And Fall 2002	0	40	23.0%	49	28.2%
1996-97	LCHE	Chemistry Transfer	3	3	Fall Of 1996 And Fall 2002	0	0	0.0%	2	66.7%
1996-97	LCHI	Chiro Preprof Transfer	4	4	Fall Of 1996 And Fall 2002	0	1	25.0%	0	0.0%
1996-97	LCOM	Computer Sci Transfer	58	46	Fall Of 1996 And Fall 2002	0	17	37.0%	7	15.2%
1996-97	LCRI	Crim Jus Admin Transfer	49	46	Fall Of 1996 And Fall 2002	0	12	26.1%	8	17.4%
1996-97	LDEN	Dental Hyg Preprof Trans	6	6	Fall Of 1996 And Fall 2002	0	2	33.3%	1	16.7%
1996-97	LDET	Dentistry Preprof Trans	2	2	Fall Of 1996 And Fall 2002	0	0	0.0%	2	100.0%
1996-97	LEDU	Education Transfer	70	61	Fall Of 1996 And Fall 2002	0	10	16.4%	17	27.9%
1996-97	LEN	Engineering Transfer	19	17	Fall Of 1996 And Fall 2002	0	6	35.3%	3	17.6%
1996-97	LENG	English Transfer	25	22	Fall Of 1996 And Fall 2002	0	3	13.6%	9	40.9%
1996-97	LFIS	Fish Wildlife Transfer	4	4	Fall Of 1996 And Fall 2002	0	1	25.0%	2	50.0%
1996-97	LFO	Foreign Lang Transfer	8	7	Fall Of 1996 And Fall 2002	0	0	0.0%	1	14.3%

Year	Major	MajorTitle	Majors	NonReturning	StartedBetween	<2YearTxfr	2YearTxfr	2Year%	4YearTxfr	4Year%
1996-97	LFOR	Forest Res Preprof Trans	8	7	Fall Of 1996 And Fall 2002	0	3	42.9%	2	28.6%
1996-97	LGE	General Science Transfer	5	5	Fall Of 1996 And Fall 2002	0	1	20.0%	2	40.0%
1996-97	LGEC	Gen Soc Science Transfer	3	2	Fall Of 1996 And Fall 2002	0	1	50.0%	1	50.0%
1996-97	LGEL	Gen St Liberal Arts Tran	195	175	Fall Of 1996 And Fall 2002	0	39	22.3%	39	22.3%
1996-97	LGEO	Geography Transfer	2	2	Fall Of 1996 And Fall 2002	0	1	50.0%	0	0.0%
1996-97	LHEH	Health,Health Ed Trans	4	4	Fall Of 1996 And Fall 2002	0	1	25.0%	2	50.0%
1996-97	LHI	History Transfer	17	17	Fall Of 1996 And Fall 2002	0	8	47.1%	7	41.2%
1996-97	LHO	Hotel,Restr,Tour Trans	8	6	Fall Of 1996 And Fall 2002	0	2	33.3%	1	16.7%
1996-97	LINT	Internat Studies Trans	6	2	Fall Of 1996 And Fall 2002	0	0	0.0%	2	100.0%
1996-97	LJOU	Journalism Transfer	17	13	Fall Of 1996 And Fall 2002	0	3	23.1%	5	38.5%
1996-97	LMA	Mathematics Transfer	3	3	Fall Of 1996 And Fall 2002	0	1	33.3%	1	33.3%
1996-97	LME	Medicine Preprof Trans	17	15	Fall Of 1996 And Fall 2002	0	6	40.0%	6	40.0%
1996-97	LMED	Med Tech Preprof Trans	3	1	Fall Of 1996 And Fall 2002	0	0	0.0%	1	100.0%
1996-97	LMU	Music Transfer	61	60	Fall Of 1996 And Fall 2002	0	13	21.7%	25	41.7%
1996-97	LNUR	Nursing Preprof Trans	32	32	Fall Of 1996 And Fall 2002	0	6	18.8%	5	15.6%
1996-97	LPHA	Pharmacy Preprof Trans	9	8	Fall Of 1996 And Fall 2002	0	2	25.0%	3	37.5%
1996-97	LPHI	Philosophy Transfer	3	3	Fall Of 1996 And Fall 2002	0	0	0.0%	2	66.7%
1996-97	LPHL	Physical Education Trans	16	15	Fall Of 1996 And Fall 2002	0	3	20.0%	4	26.7%

Year	Major	MajorTitle	Majors	NonReturning	StartedBetween	<2YearTxfr	2YearTxfr	2Year%	4YearTxfr	4Year%
1996-97	LPHS	Physics Transfer	3	3	Fall Of 1996 And Fall 2002	0	0	0.0%	3	100.0%
1996-97	LPHT	Phys Thrpy Preprof Trans	9	9	Fall Of 1996 And Fall 2002	0	2	22.2%	3	33.3%
1996-97	LPOL	Political Sci Transfer	9	8	Fall Of 1996 And Fall 2002	0	1	12.5%	3	37.5%
1996-97	LPSY	Psychology Transfer	77	73	Fall Of 1996 And Fall 2002	0	17	23.3%	24	32.9%
1996-97	LSOC	Sociology Transfer	4	2	Fall Of 1996 And Fall 2002	0	0	0.0%	1	50.0%
1996-97	LSPE	Speech Transfer	7	7	Fall Of 1996 And Fall 2002	0	2	28.6%	3	42.9%
1996-97	LTHE	Theatre Transfer	13	12	Fall Of 1996 And Fall 2002	0	0	0.0%	4	33.3%
1996-97	LVET	Veterinary Preprof Trans	7	7	Fall Of 1996 And Fall 2002	0	4	57.1%	2	28.6%
1996-97	PAC	Accounting Clerk CERT	12	12	Fall Of 1996 And Fall 2002	0	2	16.7%	0	0.0%
1996-97	PACT	Accounting Technology	41	38	Fall Of 1996 And Fall 2002	0	7	18.4%	2	5.3%
1996-97	PAU	Automotive Technology	5	5	Fall Of 1996 And Fall 2002	0	1	20.0%	0	0.0%
1996-97	PAUC	Auto Tech Eve R Cert	4	4	Fall Of 1996 And Fall 2002	0	1	25.0%	0	0.0%
1996-97	PAV	Aviation Pilot-Airplane	80	75	Fall Of 1996 And Fall 2002	0	19	25.3%	12	16.0%
1996-97	PBU	Bus Industry Based Ed	2	2	Fall Of 1996 And Fall 2002	0	1	50.0%	0	0.0%
1996-97	PBUL	**Bus Leadership and Mgt	27	25	Fall Of 1996 And Fall 2002	0	5	20.0%	4	16.0%
1996-97	PCI	Civil Engineering Tech	8	7	Fall Of 1996 And Fall 2002	0	1	14.3%	1	14.3%
1996-97	PCO	Computer App Specialist	28	28	Fall Of 1996 And Fall 2002	0	3	10.7%	6	21.4%
1996-97	PCOC	Computer App Spec CERT	5	2	Fall Of 1996 And Fall 2002	0	0	0.0%	1	50.0%

Year	Major	MajorTitle	Majors	NonReturning	StartedBetween	<2YearTxfr	2YearTxfr	2Year%	4YearTxfr	4Year%
1996-97	PCOS	Cosmetology	10	10	Fall Of 1996 And Fall 2002	0	3	30.0%	0	0.0%
1996-97	PDE	Dental Hygiene	16	13	Fall Of 1996 And Fall 2002	0	5	38.5%	0	0.0%
1996-97	PEA	Early Child Education	29	25	Fall Of 1996 And Fall 2002	0	3	12.0%	3	12.0%
1996-97	PEL	**Electronic Systms Tech	25	22	Fall Of 1996 And Fall 2002	0	6	27.3%	0	0.0%
1996-97	PEM	Emerg Med Tech R Cert	11	11	Fall Of 1996 And Fall 2002	0	2	18.2%	0	0.0%
1996-97	PEN	Entre Small Business Mgt	16	15	Fall Of 1996 And Fall 2002	0	1	6.7%	2	13.3%
1996-97	PEV	Environ Science Safety	11	11	Fall Of 1996 And Fall 2002	0	3	27.3%	3	27.3%
1996-97	PFF	Fire Science Technology	2	2	Fall Of 1996 And Fall 2002	0	1	50.0%	0	0.0%
1996-97	PFFM	Fire Sci Tech Mgmt CERT	1	1	Fall Of 1996 And Fall 2002	0	1	100.0%	0	0.0%
1996-97	PFI	Fisheries Technology	17	16	Fall Of 1996 And Fall 2002	0	2	12.5%	5	31.3%
1996-97	PFL	**Floral Tech And Design	9	8	Fall Of 1996 And Fall 2002	0	3	37.5%	0	0.0%
1996-97	PFT	Forest Resources Tech	16	15	Fall Of 1996 And Fall 2002	0	3	20.0%	4	26.7%
1996-97	PFU	Funeral Serv Education	29	29	Fall Of 1996 And Fall 2002	0	2	6.9%	1	3.4%
1996-97	PGE	General Studies	1621	1407	Fall Of 1996 And Fall 2002	0	295	21.0%	218	15.5%
1996-97	PGR	Graphic Design	17	16	Fall Of 1996 And Fall 2002	0	7	43.8%	1	6.3%
1996-97	PGT	**Graphics Technology	2	2	Fall Of 1996 And Fall 2002	0	0	0.0%	1	50.0%
1996-97	PHO	Hospitality Tourism Mang	42	39	Fall Of 1996 And Fall 2002	0	10	25.6%	4	10.3%
1996-97	PHOC	Hosp Tour Mang CERT	12	9	Fall Of 1996 And Fall 2002	0	2	22.2%	1	11.1%

Year	Major	MajorTitle	Majors	NonReturning	StartedBetween	<2YearTxfr	2YearTxfr	2Year%	4YearTxfr	4Year%
1996-97	PJO	Journalism Arts Tech	5	5	Fall Of 1996 And Fall 2002	0	0	0.0%	2	40.0%
1996-97	PLA	**Landscape Nursery Tech	14	11	Fall Of 1996 And Fall 2002	0	2	18.2%	1	9.1%
1996-97	PLAC	**Land Nursery Tech Cert	8	7	Fall Of 1996 And Fall 2002	0	1	14.3%	0	0.0%
1996-97	PLE	Legal Admin Assistant	16	16	Fall Of 1996 And Fall 2002	0	1	6.3%	0	0.0%
1996-97	PMA	Machine Tool Technology	19	16	Fall Of 1996 And Fall 2002	0	5	31.3%	1	6.3%
1996-97	PMAC	MachToolTech CNC R Cert	3	3	Fall Of 1996 And Fall 2002	0	0	0.0%	1	33.3%
1996-97	PMAM	MachToolTech Eve R Cert	3	3	Fall Of 1996 And Fall 2002	0	1	33.3%	0	0.0%
1996-97	PME	Mechanical Engin Tech	8	6	Fall Of 1996 And Fall 2002	0	0	0.0%	1	16.7%
1996-97	PMEC	Mechanical Eng Tech CERT	1	1	Fall Of 1996 And Fall 2002	0	1	100.0%	0	0.0%
1996-97	PMED	Medical Assistant	40	40	Fall Of 1996 And Fall 2002	0	8	20.0%	2	5.0%
1996-97	PMEO	Medical Off Specialist	14	14	Fall Of 1996 And Fall 2002	0	1	7.1%	2	14.3%
1996-97	PMES	Mental Health Human Serv	21	19	Fall Of 1996 And Fall 2002	0	8	42.1%	1	5.3%
1996-97	PN	Nursing	40	39	Fall Of 1996 And Fall 2002	0	15	38.5%	2	5.1%
1996-97	POC	Occupational Thrpy Asst	18	18	Fall Of 1996 And Fall 2002	0	3	16.7%	3	16.7%
1996-97	PPT	Physical Therapist Asst	25	24	Fall Of 1996 And Fall 2002	0	4	16.7%	5	20.8%
1996-97	PRA	Radio Broadcasting	29	26	Fall Of 1996 And Fall 2002	0	5	19.2%	1	3.8%
1996-97	PRE	Respiratory Care	15	15	Fall Of 1996 And Fall 2002	0	3	20.0%	2	13.3%
1996-97	PRNS	RN Surg Orient R Cert	6	6	Fall Of 1996 And Fall 2002	0	3	50.0%	1	16.7%

Year	Major	MajorTitle	Majors	NonReturning	StartedBetween	<2YearTxfr	2YearTxfr	2Year%	4YearTxfr	4Year%
1996-97	PSE	**Secretary General Cert	6	6	Fall Of 1996 And Fall 2002	0	2	33.3%	0	0.0%
1996-97	PSPM	Special Studies Music	1	1	Fall Of 1996 And Fall 2002	0	1	100.0%	0	0.0%
1996-97	PSU	Surgical Technology	13	11	Fall Of 1996 And Fall 2002	0	2	18.2%	2	18.2%
1996-97	PTE	Television Prod Tech	25	21	Fall Of 1996 And Fall 2002	0	5	23.8%	0	0.0%
1996-97	PWE	Welding Technology CERT	12	11	Fall Of 1996 And Fall 2002	0	2	18.2%	0	0.0%
1996-97	PWEE	Welding Evening R Cert	37	35	Fall Of 1996 And Fall 2002	0	7	20.0%	2	5.7%
1996-97	R2+2	2 + 2 Program	52	49	Fall Of 1996 And Fall 2002	0	5	10.2%	14	28.6%
1996-97	RA	ABE GED Tests ABE	248	9	Fall Of 1996 And Fall 2002	0	3	33.3%	0	0.0%
1996-97	RAB	ABE GED Tests GED	560	9	Fall Of 1996 And Fall 2002	0	2	22.2%	0	0.0%
1996-97	RAD	Adult Enrichment	2711	798	Fall Of 1996 And Fall 2002	0	128	16.0%	63	7.9%
1996-97	RBA	Basic Skills	685	11	Fall Of 1996 And Fall 2002	0	1	9.1%	1	9.1%
1996-97	RBR	Brickmasons	12	12	Fall Of 1996 And Fall 2002	0	2	16.7%	0	0.0%
1996-97	REA	Early Coll Opportunity	179	175	Fall Of 1996 And Fall 2002	1	10	6.3%	135	77.1%
1996-97	REN	English Second Language	930	26	Fall Of 1996 And Fall 2002	0	11	42.3%	0	0.0%
1996-97	REV	Evening Summer High Sch	142	5	Fall Of 1996 And Fall 2002	0	0	0.0%	2	40.0%
1996-97	RGL	Glassworkers	7	7	Fall Of 1996 And Fall 2002	0	1	14.3%	0	0.0%
1996-97	RHI	High School Student	51	41	Fall Of 1996 And Fall 2002	0	13	31.7%	6	14.6%
1996-97	RLI	Life Skills	321	18	Fall Of 1996 And Fall 2002	0	5	27.8%	1	5.6%

Year	Major	MajorTitle	Majors	NonReturning	StartedBetween	<2YearTxfr	2YearTxfr	2Year%	4YearTxfr	4Year%
1996-97	RMA	Machinists MSX 48 Series	10	9	Fall Of 1996 And Fall 2002	0	2	22.2%	0	0.0%
1996-97	RPE	Professional Enrichment	762	171	Fall Of 1996 And Fall 2002	0	28	16.4%	10	5.8%
1996-97	RSH	Sheet Metal Workers	86	86	Fall Of 1996 And Fall 2002	0	15	17.4%	0	0.0%
1996-97	RSM	Small Business Program	92	5	Fall Of 1996 And Fall 2002	0	0	0.0%	1	20.0%
1996-97	RTA	Target Custom Training	1389	399	Fall Of 1996 And Fall 2002	0	60	15.0%	27	6.8%
1996-97	RTI	Tilesetters	6	6	Fall Of 1996 And Fall 2002	0	0	0.0%	1	16.7%
1996-97	XBH	**Accounting	1	1	Fall Of 1996 And Fall 2002	0	0	0.0%	1	100.0%
1996-97	XCL	**Social Work	1	1	Fall Of 1996 And Fall 2002	0	1	100.0%	0	0.0%
1996-97	YBB	**Medical Recep-C	1	1	Fall Of 1996 And Fall 2002	0	1	100.0%	0	0.0%
1996-97 Total			11780	4989		1	979	19.6%	832	16.7%
1997-98	LAGB	Agri Business Transfer	2	2	Fall Of 1997 And Fall 2002	0	1	50.0%	1	50.0%
1997-98	LANT	Anthropology Transfer	4	3	Fall Of 1997 And Fall 2002	0	0	0.0%	2	66.7%
1997-98	LAR	Art Transfer	38	30	Fall Of 1997 And Fall 2002	0	11	36.7%	5	16.7%
1997-98	LBI	Bio,Ent,Mic,Bot,Zoo Tran	27	21	Fall Of 1997 And Fall 2002	0	3	14.3%	12	57.1%
1997-98	LBIC	Biochem,Biophy Transfer	2	2	Fall Of 1997 And Fall 2002	0	0	0.0%	2	100.0%
1997-98	LBUA	Business Admin Transfer	264	215	Fall Of 1997 And Fall 2002	0	45	20.9%	76	35.3%
1997-98	LCHE	Chemistry Transfer	2	2	Fall Of 1997 And Fall 2002	0	0	0.0%	1	50.0%
1997-98	LCHI	Chiro Preprof Transfer	12	10	Fall Of 1997 And Fall 2002	0	1	10.0%	1	10.0%

Year	Major	MajorTitle	Majors	NonReturning	StartedBetween	<2YearTxfr	2YearTxfr	2Year%	4YearTxfr	4Year%
1997-98	LCOM	Computer Sci Transfer	64	54	Fall Of 1997 And Fall 2002	0	10	18.5%	15	27.8%
1997-98	LCRI	Crim Jus Admin Transfer	55	50	Fall Of 1997 And Fall 2002	0	12	24.0%	12	24.0%
1997-98	LDEN	Dental Hyg Preprof Trans	10	9	Fall Of 1997 And Fall 2002	0	1	11.1%	2	22.2%
1997-98	LDET	Dentistry Preprof Trans	6	6	Fall Of 1997 And Fall 2002	0	1	16.7%	3	50.0%
1997-98	LECO	Economics Transfer	3	3	Fall Of 1997 And Fall 2002	0	0	0.0%	2	66.7%
1997-98	LEDU	Education Transfer	88	79	Fall Of 1997 And Fall 2002	0	14	17.7%	36	45.6%
1997-98	LEN	Engineering Transfer	37	36	Fall Of 1997 And Fall 2002	0	7	19.4%	13	36.1%
1997-98	LENG	English Transfer	25	19	Fall Of 1997 And Fall 2002	0	5	26.3%	9	47.4%
1997-98	LFOR	Forest Res Preprof Trans	7	6	Fall Of 1997 And Fall 2002	0	0	0.0%	1	16.7%
1997-98	LGE	General Science Transfer	4	2	Fall Of 1997 And Fall 2002	0	1	50.0%	1	50.0%
1997-98	LGEL	Gen St Liberal Arts Tran	179	153	Fall Of 1997 And Fall 2002	0	34	22.2%	43	28.1%
1997-98	LGEO	Geography Transfer	1	1	Fall Of 1997 And Fall 2002	0	0	0.0%	1	100.0%
1997-98	LGL	Geology Transfer	4	4	Fall Of 1997 And Fall 2002	0	3	75.0%	1	25.0%
1997-98	LHI	History Transfer	7	5	Fall Of 1997 And Fall 2002	0	1	20.0%	1	20.0%
1997-98	LHO	Hotel,Restr,Tour Trans	8	7	Fall Of 1997 And Fall 2002	0	1	14.3%	2	28.6%
1997-98	LINT	Internat Studies Trans	8	7	Fall Of 1997 And Fall 2002	0	2	28.6%	2	28.6%
1997-98	LJOU	Journalism Transfer	6	4	Fall Of 1997 And Fall 2002	0	1	25.0%	3	75.0%
1997-98	LMA	Mathematics Transfer	6	5	Fall Of 1997 And Fall 2002	0	0	0.0%	2	40.0%

Year	Major	MajorTitle	Majors	NonReturning	StartedBetween	<2YearTxfr	2YearTxfr	2Year%	4YearTxfr	4Year%
1997-98	LME	Medicine Preprof Trans	9	9	Fall Of 1997 And Fall 2002	0	3	33.3%	3	33.3%
1997-98	LMED	Med Tech Preprof Trans	6	3	Fall Of 1997 And Fall 2002	0	0	0.0%	1	33.3%
1997-98	LMU	Music Transfer	51	46	Fall Of 1997 And Fall 2002	0	8	17.4%	18	39.1%
1997-98	LNUR	Nursing Preprof Trans	29	24	Fall Of 1997 And Fall 2002	0	9	37.5%	4	16.7%
1997-98	LPHA	Pharmacy Preprof Trans	10	8	Fall Of 1997 And Fall 2002	0	1	12.5%	3	37.5%
1997-98	LPHI	Philosophy Transfer	3	3	Fall Of 1997 And Fall 2002	0	0	0.0%	1	33.3%
1997-98	LPHL	Physical Education Trans	15	13	Fall Of 1997 And Fall 2002	0	2	15.4%	5	38.5%
1997-98	LPHS	Physics Transfer	2	1	Fall Of 1997 And Fall 2002	0	1	100.0%	0	0.0%
1997-98	LPHT	Phys Thrpy Preprof Trans	9	7	Fall Of 1997 And Fall 2002	0	3	42.9%	3	42.9%
1997-98	LPOL	Political Sci Transfer	14	11	Fall Of 1997 And Fall 2002	0	3	27.3%	4	36.4%
1997-98	LPSY	Psychology Transfer	72	62	Fall Of 1997 And Fall 2002	0	14	22.6%	20	32.3%
1997-98	LSOC	Sociology Transfer	10	7	Fall Of 1997 And Fall 2002	0	0	0.0%	3	42.9%
1997-98	LTHE	Theatre Transfer	15	13	Fall Of 1997 And Fall 2002	0	0	0.0%	4	30.8%
1997-98	LVET	Veterinary Preprof Trans	6	5	Fall Of 1997 And Fall 2002	0	2	40.0%	0	0.0%
1997-98	PAC	Accounting Clerk CERT	10	8	Fall Of 1997 And Fall 2002	0	1	12.5%	1	12.5%
1997-98	PACT	Accounting Technology	32	26	Fall Of 1997 And Fall 2002	0	5	19.2%	2	7.7%
1997-98	PADM	**Admin Exec Assistant	11	10	Fall Of 1997 And Fall 2002	0	1	10.0%	1	10.0%
1997-98	PAR	Architect Eng Technology	10	9	Fall Of 1997 And Fall 2002	0	2	22.2%	0	0.0%

Year	Major	MajorTitle	Majors	NonReturning	StartedBetween	<2YearTxfr	2YearTxfr	2Year%	4YearTxfr	4Year%
1997-98	PAU	Automotive Technology	20	17	Fall Of 1997 And Fall 2002	0	1	5.9%	0	0.0%
1997-98	PAUC	Auto Tech Eve R Cert	4	4	Fall Of 1997 And Fall 2002	0	2	50.0%	0	0.0%
1997-98	PAV	Aviation Pilot-Airplane	48	42	Fall Of 1997 And Fall 2002	0	9	21.4%	12	28.6%
1997-98	PBU	Bus Industry Based Ed	116	65	Fall Of 1997 And Fall 2002	0	8	12.3%	6	9.2%
1997-98	PBUL	**Bus Leadership and Mgt	32	29	Fall Of 1997 And Fall 2002	0	3	10.3%	5	17.2%
1997-98	PCHA	Chrysler CAP IMP Auto	5	5	Fall Of 1997 And Fall 2002	0	1	20.0%	0	0.0%
1997-98	PCI	Civil Engineering Tech	5	4	Fall Of 1997 And Fall 2002	0	1	25.0%	1	25.0%
1997-98	PCO	Computer App Specialist	43	37	Fall Of 1997 And Fall 2002	0	6	16.2%	1	2.7%
1997-98	PCOS	Cosmetology	22	22	Fall Of 1997 And Fall 2002	0	3	13.6%	0	0.0%
1997-98	PDE	Dental Hygiene	16	11	Fall Of 1997 And Fall 2002	0	3	27.3%	0	0.0%
1997-98	PEA	Early Child Education	33	29	Fall Of 1997 And Fall 2002	0	3	10.3%	5	17.2%
1997-98	PEAC	Early Childhood Ed CERT	2	2	Fall Of 1997 And Fall 2002	0	0	0.0%	1	50.0%
1997-98	PEL	**Electronic Systms Tech	23	19	Fall Of 1997 And Fall 2002	0	5	26.3%	2	10.5%
1997-98	PEN	Entre Small Business Mgt	25	22	Fall Of 1997 And Fall 2002	0	2	9.1%	0	0.0%
1997-98	PEV	Environ Science Safety	18	18	Fall Of 1997 And Fall 2002	0	3	16.7%	5	27.8%
1997-98	PEVC	Env Science Safety CERT	7	6	Fall Of 1997 And Fall 2002	0	5	83.3%	0	0.0%
1997-98	PFF	Fire Science Technology	2	2	Fall Of 1997 And Fall 2002	0	1	50.0%	0	0.0%
1997-98	PFI	Fisheries Technology	16	16	Fall Of 1997 And Fall 2002	0	2	12.5%	4	25.0%

Year	Major	MajorTitle	Majors	NonReturning	StartedBetween	<2YearTxfr	2YearTxfr	2Year%	4YearTxfr	4Year%
1997-98	PFLC	**Floral Tech Des Cert	5	4	Fall Of 1997 And Fall 2002	0	1	25.0%	0	0.0%
1997-98	PFOD	**Food Science Tech	17	16	Fall Of 1997 And Fall 2002	0	0	0.0%	2	12.5%
1997-98	PFOR	Ford ASSET Auto Tech	42	41	Fall Of 1997 And Fall 2002	0	7	17.1%	1	2.4%
1997-98	PFT	Forest Resources Tech	14	13	Fall Of 1997 And Fall 2002	0	2	15.4%	3	23.1%
1997-98	PFU	Funeral Serv Education	36	36	Fall Of 1997 And Fall 2002	0	1	2.8%	0	0.0%
1997-98	PGE	General Studies	1967	1598	Fall Of 1997 And Fall 2002	1	336	21.1%	318	19.9%
1997-98	PGR	Graphic Design	25	22	Fall Of 1997 And Fall 2002	0	10	45.5%	0	0.0%
1997-98	PGT	**Graphics Technology	2	2	Fall Of 1997 And Fall 2002	0	1	50.0%	0	0.0%
1997-98	PH	Horticulture	8	8	Fall Of 1997 And Fall 2002	0	1	12.5%	2	25.0%
1997-98	PHO	Hospitality Tourism Mang	38	32	Fall Of 1997 And Fall 2002	0	7	21.9%	1	3.1%
1997-98	PHOC	Hosp Tour Mang CERT	15	11	Fall Of 1997 And Fall 2002	0	2	18.2%	1	9.1%
1997-98	PIN	Int Natural Resource	4	4	Fall Of 1997 And Fall 2002	0	1	25.0%	0	0.0%
1997-98	PJO	Journalism Arts Tech	4	3	Fall Of 1997 And Fall 2002	0	1	33.3%	0	0.0%
1997-98	PLE	Legal Admin Assistant	13	10	Fall Of 1997 And Fall 2002	0	1	10.0%	0	0.0%
1997-98	PMA	Machine Tool Technology	12	12	Fall Of 1997 And Fall 2002	0	3	25.0%	1	8.3%
1997-98	PMAM	MachToolTech Eve R Cert	8	6	Fall Of 1997 And Fall 2002	0	2	33.3%	0	0.0%
1997-98	PME	Mechanical Engin Tech	9	9	Fall Of 1997 And Fall 2002	0	2	22.2%	3	33.3%
1997-98	PMED	Medical Assistant	32	29	Fall Of 1997 And Fall 2002	0	7	24.1%	4	13.8%

Year	Major	MajorTitle	Majors	NonReturning	StartedBetween	<2YearTxfr	2YearTxfr	2Year%	4YearTxfr	4Year%
1997-98	PMEL	Med Claims Anal R Cert	6	4	Fall Of 1997 And Fall 2002	0	1	25.0%	0	0.0%
1997-98	PMEO	Medical Off Specialist	11	10	Fall Of 1997 And Fall 2002	0	1	10.0%	1	10.0%
1997-98	PMES	Mental Health Human Serv	31	25	Fall Of 1997 And Fall 2002	0	5	20.0%	6	24.0%
1997-98	PMET	Medical Transcription	8	8	Fall Of 1997 And Fall 2002	0	4	50.0%	0	0.0%
1997-98	PN	Nursing	39	35	Fall Of 1997 And Fall 2002	0	12	34.3%	2	5.7%
1997-98	PNA	Nursing Assistant R Cert	10	8	Fall Of 1997 And Fall 2002	0	2	25.0%	0	0.0%
1997-98	POC	Occupational Thrpy Asst	12	11	Fall Of 1997 And Fall 2002	0	2	18.2%	0	0.0%
1997-98	PPT	Physical Therapist Asst	27	27	Fall Of 1997 And Fall 2002	0	3	11.1%	0	0.0%
1997-98	PPTG	**Printing Technology	5	5	Fall Of 1997 And Fall 2002	0	1	20.0%	0	0.0%
1997-98	PRA	Radio Broadcasting	26	24	Fall Of 1997 And Fall 2002	0	2	8.3%	3	12.5%
1997-98	PRE	Respiratory Care	13	13	Fall Of 1997 And Fall 2002	0	8	61.5%	2	15.4%
1997-98	PRNR	RN Refresher R Cert	7	6	Fall Of 1997 And Fall 2002	0	3	50.0%	1	16.7%
1997-98	PRNS	RN Surg Orient R Cert	13	13	Fall Of 1997 And Fall 2002	0	7	53.8%	0	0.0%
1997-98	PSE	**Secretary General Cert	4	3	Fall Of 1997 And Fall 2002	0	1	33.3%	0	0.0%
1997-98	PSTT	Sp St Theatre Tech Desgn	1	1	Fall Of 1997 And Fall 2002	0	1	100.0%	0	0.0%
1997-98	PSU	Surgical Technology	19	19	Fall Of 1997 And Fall 2002	0	7	36.8%	3	15.8%
1997-98	PTE	Television Prod Tech	23	23	Fall Of 1997 And Fall 2002	0	7	30.4%	3	13.0%
1997-98	PWE	Welding Technology CERT	13	11	Fall Of 1997 And Fall 2002	0	6	54.5%	0	0.0%

Year	Major	MajorTitle	Majors	NonReturning	StartedBetween	<2YearTxfr	2YearTxfr	2Year%	4YearTxfr	4Year%
1997-98	PWEE	Welding Evening R Cert	29	27	Fall Of 1997 And Fall 2002	0	8	29.6%	0	0.0%
1997-98	PWO	**Word Info Proc Mang	2	2	Fall Of 1997 And Fall 2002	0	0	0.0%	1	50.0%
1997-98	R2+2	2 + 2 Program	77	69	Fall Of 1997 And Fall 2002	0	9	13.0%	19	27.5%
1997-98	RA	ABE GED Tests ABE	287	8	Fall Of 1997 And Fall 2002	0	1	12.5%	0	0.0%
1997-98	RAB	ABE GED Tests GED	720	15	Fall Of 1997 And Fall 2002	0	3	20.0%	0	0.0%
1997-98	RAD	Adult Enrichment	3114	826	Fall Of 1997 And Fall 2002	0	129	15.6%	64	7.7%
1997-98	RBR	Brickmasons	8	8	Fall Of 1997 And Fall 2002	0	2	25.0%	0	0.0%
1997-98	REA	Early Coll Opportunity	227	212	Fall Of 1997 And Fall 2002	0	16	7.5%	159	75.0%
1997-98	REN	English Second Language	1475	44	Fall Of 1997 And Fall 2002	0	11	25.0%	3	6.8%
1997-98	REV	Evening Summer High Sch	239	16	Fall Of 1997 And Fall 2002	0	3	18.8%	2	12.5%
1997-98	RGL	Glassworkers	20	20	Fall Of 1997 And Fall 2002	0	3	15.0%	0	0.0%
1997-98	RHI	High School Student	82	56	Fall Of 1997 And Fall 2002	0	9	16.1%	19	33.9%
1997-98	RLI	Life Skills	230	20	Fall Of 1997 And Fall 2002	0	3	15.0%	0	0.0%
1997-98	RMA	Machinists MSX 48 Series	10	9	Fall Of 1997 And Fall 2002	0	3	33.3%	0	0.0%
1997-98	RPE	Professional Enrichment	907	156	Fall Of 1997 And Fall 2002	0	35	22.4%	7	4.5%
1997-98	RSH	Sheet Metal Workers	102	98	Fall Of 1997 And Fall 2002	0	17	17.3%	0	0.0%
1997-98	RSM	Small Business Program	180	3	Fall Of 1997 And Fall 2002	0	1	33.3%	0	0.0%
1997-98	RTA	Target Custom Training	1815	510	Fall Of 1997 And Fall 2002	0	84	16.5%	44	8.6%

Year	Major	MajorTitle	Majors	NonReturning	StartedBetween	<2YearTxfr	2YearTxfr	2Year%	4YearTxfr	4Year%
1997-98										
Total			13663	5551		1	1062	19.1%	1039	18.7%
1998-99	LANT	Anthropology Transfer	4	2	Fall Of 1998 And Fall 2002	0	0	0.0%	2	100.0%
1998-99	LAR	Art Transfer	36	31	Fall Of 1998 And Fall 2002	0	5	16.1%	11	35.5%
1998-99	LARE	Art Education Transfer	4	3	Fall Of 1998 And Fall 2002	0	1	33.3%	0	0.0%
1998-99	LBI	Bio,Ent,Mic,Bot,Zoo Tran	31	27	Fall Of 1998 And Fall 2002	0	3	11.1%	13	48.1%
1998-99	LBUA	Business Admin Transfer	238	188	Fall Of 1998 And Fall 2002	0	41	21.8%	57	30.3%
1998-99	LCHE	Chemistry Transfer	6	6	Fall Of 1998 And Fall 2002	0	0	0.0%	3	50.0%
1998-99	LCHI	Chiro Preprof Transfer	6	5	Fall Of 1998 And Fall 2002	0	1	20.0%	0	0.0%
1998-99	LCOM	Computer Sci Transfer	75	66	Fall Of 1998 And Fall 2002	0	13	19.7%	20	30.3%
1998-99	LCRI	Crim Jus Admin Transfer	58	51	Fall Of 1998 And Fall 2002	0	13	25.5%	11	21.6%
1998-99	LDET	Dentistry Preprof Trans	2	2	Fall Of 1998 And Fall 2002	0	0	0.0%	1	50.0%
1998-99	LECO	Economics Transfer	3	3	Fall Of 1998 And Fall 2002	0	0	0.0%	3	100.0%
1998-99	LEDU	Education Transfer	115	106	Fall Of 1998 And Fall 2002	0	19	17.9%	35	33.0%
1998-99	LEN	Engineering Transfer	53	49	Fall Of 1998 And Fall 2002	0	13	26.5%	15	30.6%
1998-99	LENG	English Transfer	25	20	Fall Of 1998 And Fall 2002	0	4	20.0%	9	45.0%
1998-99	LFIS	Fish Wildlife Transfer	6	4	Fall Of 1998 And Fall 2002	0	1	25.0%	2	50.0%
1998-99	LFO	Foreign Lang Transfer	2	2	Fall Of 1998 And Fall 2002	0	1	50.0%	0	0.0%
1998-99	LGE	General Science Transfer	5	4	Fall Of 1998 And Fall 2002	0	0	0.0%	1	25.0%

Year	Major	MajorTitle	Majors	NonReturning	StartedBetween	<2YearTxfr	2YearTxfr	2Year%	4YearTxfr	4Year%
1998-99	LGEC	Gen Soc Science Transfer	2	2	Fall Of 1998 And Fall 2002	0	0	0.0%	2	100.0%
1998-99	LGEL	Gen St Liberal Arts Tran	225	191	Fall Of 1998 And Fall 2002	0	44	23.0%	57	29.8%
1998-99	LGEO	Geography Transfer	1	1	Fall Of 1998 And Fall 2002	0	1	100.0%	0	0.0%
1998-99	LHEH	Health,Health Ed Trans	5	4	Fall Of 1998 And Fall 2002	0	1	25.0%	3	75.0%
1998-99	LHI	History Transfer	26	23	Fall Of 1998 And Fall 2002	0	5	21.7%	7	30.4%
1998-99	LHO	Hotel,Restr,Tour Trans	8	6	Fall Of 1998 And Fall 2002	0	1	16.7%	3	50.0%
1998-99	LJOU	Journalism Transfer	12	9	Fall Of 1998 And Fall 2002	0	2	22.2%	5	55.6%
1998-99	LMA	Mathematics Transfer	4	3	Fall Of 1998 And Fall 2002	0	1	33.3%	2	66.7%
1998-99	LME	Medicine Preprof Trans	17	17	Fall Of 1998 And Fall 2002	0	4	23.5%	8	47.1%
1998-99	LMU	Music Transfer	72	65	Fall Of 1998 And Fall 2002	0	18	27.7%	13	20.0%
1998-99	LNUR	Nursing Preprof Trans	44	35	Fall Of 1998 And Fall 2002	0	9	25.7%	9	25.7%
1998-99	LPHA	Pharmacy Preprof Trans	8	8	Fall Of 1998 And Fall 2002	0	1	12.5%	4	50.0%
1998-99	LPHI	Philosophy Transfer	4	2	Fall Of 1998 And Fall 2002	0	2	100.0%	0	0.0%
1998-99	LPHL	Physical Education Trans	10	9	Fall Of 1998 And Fall 2002	0	2	22.2%	2	22.2%
1998-99	LPHS	Physics Transfer	5	2	Fall Of 1998 And Fall 2002	0	2	100.0%	0	0.0%
1998-99	LPHT	Phys Thrpy Preprof Trans	13	13	Fall Of 1998 And Fall 2002	0	5	38.5%	4	30.8%
1998-99	LPOL	Political Sci Transfer	11	9	Fall Of 1998 And Fall 2002	0	2	22.2%	4	44.4%
1998-99	LPSY	Psychology Transfer	69	56	Fall Of 1998 And Fall 2002	0	11	19.6%	17	30.4%

Year	Major	MajorTitle	Majors	NonReturning	StartedBetween	<2YearTxfr	2YearTxfr	2Year%	4YearTxfr	4Year%
1998-99	LSOC	Sociology Transfer	17	16	Fall Of 1998 And Fall 2002	0	2	12.5%	8	50.0%
1998-99	LSPE	Speech Transfer	5	3	Fall Of 1998 And Fall 2002	0	1	33.3%	1	33.3%
1998-99	LTHE	Theatre Transfer	12	10	Fall Of 1998 And Fall 2002	0	3	30.0%	3	30.0%
1998-99	LVET	Veterinary Preprof Trans	9	8	Fall Of 1998 And Fall 2002	0	0	0.0%	4	50.0%
1998-99	PAC	Accounting Clerk CERT	14	8	Fall Of 1998 And Fall 2002	0	1	12.5%	0	0.0%
1998-99	PACT	Accounting Technology	46	35	Fall Of 1998 And Fall 2002	0	1	2.9%	7	20.0%
1998-99	PADM	**Admin Exec Assistant	12	12	Fall Of 1998 And Fall 2002	0	1	8.3%	0	0.0%
1998-99	PAR	Architect Eng Technology	12	10	Fall Of 1998 And Fall 2002	0	1	10.0%	1	10.0%
1998-99	PAU	Automotive Technology	6	5	Fall Of 1998 And Fall 2002	0	0	0.0%	1	20.0%
1998-99	PAUC	Auto Tech Eve R Cert	9	9	Fall Of 1998 And Fall 2002	0	0	0.0%	1	11.1%
1998-99	PAV	Aviation Pilot-Airplane	46	44	Fall Of 1998 And Fall 2002	0	10	22.7%	8	18.2%
1998-99	PBU	Bus Industry Based Ed	12	8	Fall Of 1998 And Fall 2002	0	0	0.0%	1	12.5%
1998-99	PBUL	**Bus Leadership and Mgt	33	29	Fall Of 1998 And Fall 2002	0	7	24.1%	2	6.9%
1998-99	PCHA	Chrysler CAP IMP Auto	24	24	Fall Of 1998 And Fall 2002	0	5	20.8%	0	0.0%
1998-99	PCI	Civil Engineering Tech	7	5	Fall Of 1998 And Fall 2002	0	0	0.0%	1	20.0%
1998-99	PCO	Computer App Specialist	70	66	Fall Of 1998 And Fall 2002	0	6	9.1%	5	7.6%
1998-99	PCOC	Computer App Spec CERT	11	11	Fall Of 1998 And Fall 2002	0	2	18.2%	2	18.2%
1998-99	PCOS	Cosmetology	21	21	Fall Of 1998 And Fall 2002	0	4	19.0%	0	0.0%

Year	Major	MajorTitle	Majors	NonReturning	StartedBetween	<2YearTxfr	2YearTxfr	2Year%	4YearTxfr	4Year%
1998-99	PDE	Dental Hygiene	20	18	Fall Of 1998 And Fall 2002	0	3	16.7%	2	11.1%
1998-99	PEA	Early Child Education	29	24	Fall Of 1998 And Fall 2002	0	1	4.2%	5	20.8%
1998-99	PEAC	Early Childhood Ed CERT	12	11	Fall Of 1998 And Fall 2002	0	3	27.3%	2	18.2%
1998-99	PEL	**Electronic Systms Tech	11	9	Fall Of 1998 And Fall 2002	0	2	22.2%	2	22.2%
1998-99	PELT	Electronics Technology	6	6	Fall Of 1998 And Fall 2002	0	0	0.0%	2	33.3%
1998-99	PEM	Emerg Med Tech R Cert	5	4	Fall Of 1998 And Fall 2002	0	2	50.0%	0	0.0%
1998-99	PEN	Entre Small Business Mgt	16	13	Fall Of 1998 And Fall 2002	0	0	0.0%	1	7.7%
1998-99	PEV	Environ Science Safety	16	12	Fall Of 1998 And Fall 2002	0	6	50.0%	1	8.3%
1998-99	PEVC	Env Science Safety CERT	4	4	Fall Of 1998 And Fall 2002	0	3	75.0%	0	0.0%
1998-99	PFI	Fisheries Technology	15	15	Fall Of 1998 And Fall 2002	0	1	6.7%	2	13.3%
1998-99	PFL	**Floral Tech And Design	2	1	Fall Of 1998 And Fall 2002	0	1	100.0%	0	0.0%
1998-99	PFOR	Ford ASSET Auto Tech	2	1	Fall Of 1998 And Fall 2002	0	0	0.0%	1	100.0%
1998-99	PFT	Forest Resources Tech	14	14	Fall Of 1998 And Fall 2002	0	4	28.6%	1	7.1%
1998-99	PFTC	Forest Res Tech CERT	2	2	Fall Of 1998 And Fall 2002	0	1	50.0%	0	0.0%
1998-99	PFU	Funeral Serv Education	36	35	Fall Of 1998 And Fall 2002	0	4	11.4%	1	2.9%
1998-99	PGE	General Studies	2321	1864	Fall Of 1998 And Fall 2002	1	387	20.8%	332	17.8%
1998-99	PGR	Graphic Design	19	17	Fall Of 1998 And Fall 2002	0	5	29.4%	3	17.6%
1998-99	PH	Horticulture	16	12	Fall Of 1998 And Fall 2002	0	1	8.3%	2	16.7%

Year	Major	MajorTitle	Majors	NonReturning	StartedBetween	<2YearTxfr	2YearTxfr	2Year%	4YearTxfr	4Year%
1998-99	PHC	Horticulture CERT	5	4	Fall Of 1998 And Fall 2002	0	1	25.0%	0	0.0%
1998-99	PHO	Hospitality Tourism Mang	59	47	Fall Of 1998 And Fall 2002	0	9	19.1%	2	4.3%
1998-99	PHOC	Hosp Tour Mang CERT	13	13	Fall Of 1998 And Fall 2002	0	1	7.7%	1	7.7%
1998-99	PIN	Int Natural Resource	10	8	Fall Of 1998 And Fall 2002	0	2	25.0%	2	25.0%
1998-99	PJO	Journalism Arts Tech	5	4	Fall Of 1998 And Fall 2002	0	1	25.0%	0	0.0%
1998-99	PLE	Legal Admin Assistant	21	19	Fall Of 1998 And Fall 2002	0	2	10.5%	2	10.5%
1998-99	PMA	Machine Tool Technology	17	17	Fall Of 1998 And Fall 2002	0	2	11.8%	1	5.9%
1998-99	PME	Mechanical Engin Tech	10	9	Fall Of 1998 And Fall 2002	0	1	11.1%	0	0.0%
1998-99	PMED	Medical Assistant	28	25	Fall Of 1998 And Fall 2002	0	7	28.0%	2	8.0%
1998-99	PMEN	Med Office Coding R CERT	3	3	Fall Of 1998 And Fall 2002	0	2	66.7%	0	0.0%
1998-99	PMER	Medical Recept R Cert	3	1	Fall Of 1998 And Fall 2002	0	0	0.0%	1	100.0%
1998-99	PMES	Mental Health Human Serv	30	26	Fall Of 1998 And Fall 2002	0	2	7.7%	3	11.5%
1998-99	PMET	Medical Transcription	14	14	Fall Of 1998 And Fall 2002	0	2	14.3%	1	7.1%
1998-99	PN	Nursing	44	40	Fall Of 1998 And Fall 2002	0	9	22.5%	1	2.5%
1998-99	PNA	Nursing Assistant R Cert	13	13	Fall Of 1998 And Fall 2002	0	5	38.5%	1	7.7%
1998-99	POC	Occupational Thrpy Asst	30	18	Fall Of 1998 And Fall 2002	0	5	27.8%	1	5.6%
1998-99	PPT	Physical Therapist Asst	24	21	Fall Of 1998 And Fall 2002	0	2	9.5%	0	0.0%
1998-99	PPTG	**Printing Technology	5	4	Fall Of 1998 And Fall 2002	0	1	25.0%	0	0.0%

Year	Major	MajorTitle	Majors	NonReturning	StartedBetween	<2YearTxfr	2YearTxfr	2Year%	4YearTxfr	4Year%
1998-99	PPTR	Professional Photography	3	3	Fall Of 1998 And Fall 2002	0	0	0.0%	1	33.3%
1998-99	PRA	Radio Broadcasting	23	21	Fall Of 1998 And Fall 2002	0	5	23.8%	3	14.3%
1998-99	PRE	Respiratory Care	17	16	Fall Of 1998 And Fall 2002	0	6	37.5%	2	12.5%
1998-99	PRNR	RN Refresher R Cert	5	4	Fall Of 1998 And Fall 2002	0	2	50.0%	1	25.0%
1998-99	PRNS	RN Surg Orient R Cert	33	33	Fall Of 1998 And Fall 2002	0	7	21.2%	1	3.0%
1998-99	PSE	**Secretary General Cert	5	4	Fall Of 1998 And Fall 2002	0	2	50.0%	0	0.0%
1998-99	PSU	Surgical Technology	14	13	Fall Of 1998 And Fall 2002	0	3	23.1%	4	30.8%
1998-99	PTE	Television Prod Tech	31	26	Fall Of 1998 And Fall 2002	0	3	11.5%	4	15.4%
1998-99	PWE	Welding Technology CERT	23	20	Fall Of 1998 And Fall 2002	0	1	5.0%	0	0.0%
1998-99	PWEE	Welding Evening R Cert	49	45	Fall Of 1998 And Fall 2002	0	10	22.2%	0	0.0%
1998-99	R2+2	2 + 2 Program	43	30	Fall Of 1998 And Fall 2002	0	3	10.0%	9	30.0%
1998-99	RA	ABE GED Tests ABE	330	10	Fall Of 1998 And Fall 2002	0	2	20.0%	0	0.0%
1998-99	RAB	ABE GED Tests GED	632	17	Fall Of 1998 And Fall 2002	0	3	17.6%	1	5.9%
1998-99	RAD	Adult Enrichment	3990	736	Fall Of 1998 And Fall 2002	1	109	14.9%	59	8.0%
1998-99	RBA	Basic Skills	937	13	Fall Of 1998 And Fall 2002	0	2	15.4%	0	0.0%
1998-99	RBR	Brickmasons	9	9	Fall Of 1998 And Fall 2002	0	2	22.2%	0	0.0%
1998-99	REA	Early Coll Opportunity	271	252	Fall Of 1998 And Fall 2002	0	16	6.3%	187	74.2%
1998-99	REN	English Second Language	1628	24	Fall Of 1998 And Fall 2002	0	3	12.5%	2	8.3%

Year	Major	MajorTitle	Majors	NonReturning	StartedBetween	<2YearTxfr	2YearTxfr	2Year%	4YearTxfr	4Year%
1998-99	REV	Evening Summer High Sch	246	19	Fall Of 1998 And Fall 2002	0	2	10.5%	2	10.5%
1998-99	RGL	Glassworkers	12	12	Fall Of 1998 And Fall 2002	0	4	33.3%	0	0.0%
1998-99	RHI	High School Student	108	57	Fall Of 1998 And Fall 2002	0	11	19.3%	21	36.8%
1998-99	RMF	Masonry Finisher	7	7	Fall Of 1998 And Fall 2002	0	1	14.3%	0	0.0%
1998-99	RPE	Professional Enrichment	563	109	Fall Of 1998 And Fall 2002	0	17	15.6%	3	2.8%
1998-99	RPR	Project YESS	24	6	Fall Of 1998 And Fall 2002	0	3	50.0%	0	0.0%
1998-99	RSH	Sheet Metal Workers	88	83	Fall Of 1998 And Fall 2002	0	11	13.3%	1	1.2%
1998-99	RSM	Small Business Program	151	5	Fall Of 1998 And Fall 2002	0	1	20.0%	0	0.0%
1998-99	RSP	Student Age 15 or under	6	2	Fall Of 1998 And Fall 2002	0	1	50.0%	0	0.0%
1998-99	RTA	Target Custom Training	1796	551	Fall Of 1998 And Fall 2002	0	124	22.5%	31	5.6%
1998-99	YAH	**Bus Mgmt/Ldrship-Gen	8	5	Fall Of 1998 And Fall 2002	0	1	20.0%	0	0.0%
1998-99	YAX	**Real Estate	4	3	Fall Of 1998 And Fall 2002	0	0	0.0%	1	33.3%
1998-99	YC	**Elect Eng Tech	1	1	Fall Of 1998 And Fall 2002	0	1	100.0%	0	0.0%
1998-99	ZAK	**Undecided	18	3	Fall Of 1998 And Fall 2002	0	1	33.3%	0	0.0%
1998-99 Total			15526	5835		2	1105	19.0%	1076	18.4%
1999-00	LAGR	Agriculture Transfer	5	6	Fall Of 1999 And Fall 2002	0	0	0.0%	1	16.7%
1999-00	LANT	Anthropology Transfer	10	8	Fall Of 1999 And Fall 2002	0	1	12.5%	4	50.0%
1999-00	LAR	Art Transfer	21	17	Fall Of 1999 And Fall 2002	0	3	17.6%	6	35.3%

Year	Major	MajorTitle	Majors	NonReturning	StartedBetween	<2YearTxfr	2YearTxfr	2Year%	4YearTxfr	4Year%
1999-00	LARE	Art Education Transfer	6	6	Fall Of 1999 And Fall 2002	0	1	16.7%	0	0.0%
1999-00	LBI	Bio,Ent,Mic,Bot,Zoo Tran	23	22	Fall Of 1999 And Fall 2002	0	3	13.6%	4	18.2%
1999-00	LBIC	Biochem,Biophy Transfer	3	4	Fall Of 1999 And Fall 2002	0	0	0.0%	2	50.0%
1999-00	LBUA	Business Admin Transfer	270	239	Fall Of 1999 And Fall 2002	0	27	11.3%	67	28.0%
1999-00	LBUD	Accelerated Bus Adm Tran	2	2	Fall Of 1999 And Fall 2002	0	0	0.0%	1	50.0%
1999-00	LBUE	Business Education Trans	5	5	Fall Of 1999 And Fall 2002	0	1	20.0%	0	0.0%
1999-00	LCHI	Chiro Preprof Transfer	5	5	Fall Of 1999 And Fall 2002	0	2	40.0%	1	20.0%
1999-00	LCOM	Computer Sci Transfer	75	65	Fall Of 1999 And Fall 2002	0	5	7.7%	7	10.8%
1999-00	LCRI	Crim Jus Admin Transfer	62	47	Fall Of 1999 And Fall 2002	0	8	17.0%	4	8.5%
1999-00	LDEN	Dental Hyg Preprof Trans	10	9	Fall Of 1999 And Fall 2002	0	3	33.3%	1	11.1%
1999-00	LECO	Economics Transfer	3	3	Fall Of 1999 And Fall 2002	0	0	0.0%	2	66.7%
1999-00	LEDU	Education Transfer	122	109	Fall Of 1999 And Fall 2002	0	10	9.2%	24	22.0%
1999-00	LEN	Engineering Transfer	58	55	Fall Of 1999 And Fall 2002	0	6	10.9%	23	41.8%
1999-00	LENG	English Transfer	15	13	Fall Of 1999 And Fall 2002	0	3	23.1%	3	23.1%
1999-00	LENV	Environ Sciences Trans	3	3	Fall Of 1999 And Fall 2002	0	0	0.0%	1	33.3%
1999-00	LFO	Foreign Lang Transfer	8	6	Fall Of 1999 And Fall 2002	0	0	0.0%	2	33.3%
1999-00	LFOR	Forest Res Preprof Trans	4	4	Fall Of 1999 And Fall 2002	0	1	25.0%	1	25.0%
1999-00	LGE	General Science Transfer	6	7	Fall Of 1999 And Fall 2002	0	0	0.0%	2	28.6%

Year	Major	MajorTitle	Majors	NonReturning	StartedBetween	<2YearTxfr	2YearTxfr	2Year%	4YearTxfr	4Year%
1999-00	LGEC	Gen Soc Science Transfer	3	2	Fall Of 1999 And Fall 2002	0	0	0.0%	1	50.0%
1999-00	LGEL	Gen St Liberal Arts Tran	182	151	Fall Of 1999 And Fall 2002	0	16	10.6%	44	29.1%
1999-00	LGEM	GenSt Lib Arts CO PSU T	3	3	Fall Of 1999 And Fall 2002	0	0	0.0%	2	66.7%
1999-00	LGEO	Geography Transfer	1	1	Fall Of 1999 And Fall 2002	0	0	0.0%	1	100.0%
1999-00	LHEH	Health,Health Ed Trans	4	5	Fall Of 1999 And Fall 2002	0	3	60.0%	1	20.0%
1999-00	LHI	History Transfer	13	11	Fall Of 1999 And Fall 2002	0	1	9.1%	5	45.5%
1999-00	LHO	Hotel,Restr,Tour Trans	4	5	Fall Of 1999 And Fall 2002	0	1	20.0%	1	20.0%
1999-00	LJOU	Journalism Transfer	12	9	Fall Of 1999 And Fall 2002	0	0	0.0%	2	22.2%
1999-00	LMA	Mathematics Transfer	6	6	Fall Of 1999 And Fall 2002	0	0	0.0%	2	33.3%
1999-00	LME	Medicine Preprof Trans	16	14	Fall Of 1999 And Fall 2002	0	1	7.1%	2	14.3%
1999-00	LMU	Music Transfer	62	58	Fall Of 1999 And Fall 2002	0	7	12.1%	11	19.0%
1999-00	LNUR	Nursing Preprof Trans	38	39	Fall Of 1999 And Fall 2002	0	5	12.8%	7	17.9%
1999-00	LPHA	Pharmacy Preprof Trans	8	8	Fall Of 1999 And Fall 2002	0	0	0.0%	2	25.0%
1999-00	LPHL	Physical Education Trans	21	17	Fall Of 1999 And Fall 2002	0	0	0.0%	6	35.3%
1999-00	LPHS	Physics Transfer	5	4	Fall Of 1999 And Fall 2002	0	0	0.0%	1	25.0%
1999-00	LPHT	Phys Thrpy Preprof Trans	11	12	Fall Of 1999 And Fall 2002	0	3	25.0%	1	8.3%
1999-00	LPOL	Political Sci Transfer	13	12	Fall Of 1999 And Fall 2002	0	0	0.0%	3	25.0%
1999-00	LPSY	Psychology Transfer	73	69	Fall Of 1999 And Fall 2002	0	12	17.4%	20	29.0%

Year	Major	MajorTitle	Majors	NonReturning	StartedBetween	<2YearTxfr	2YearTxfr	2Year%	4YearTxfr	4Year%
1999-00	LSOC	Sociology Transfer	7	8	Fall Of 1999 And Fall 2002	0	0	0.0%	3	37.5%
1999-00	LSPE	Speech Transfer	7	5	Fall Of 1999 And Fall 2002	0	0	0.0%	1	20.0%
1999-00	LTHE	Theatre Transfer	9	7	Fall Of 1999 And Fall 2002	0	1	14.3%	2	28.6%
1999-00	LVET	Veterinary Preprof Trans	2	3	Fall Of 1999 And Fall 2002	0	0	0.0%	1	33.3%
1999-00	PAC	Accounting Clerk CERT	8	5	Fall Of 1999 And Fall 2002	0	0	0.0%	1	20.0%
1999-00	PACT	Accounting Technology	44	45	Fall Of 1999 And Fall 2002	0	7	15.6%	3	6.7%
1999-00	PADM	**Admin Exec Assistant	13	12	Fall Of 1999 And Fall 2002	0	1	8.3%	0	0.0%
1999-00	PAR	Architect Eng Technology	12	13	Fall Of 1999 And Fall 2002	0	2	15.4%	0	0.0%
1999-00	PAUC	Auto Tech Eve R Cert	7	7	Fall Of 1999 And Fall 2002	0	2	28.6%	0	0.0%
1999-00	PAV	Aviation Pilot-Airplane	50	43	Fall Of 1999 And Fall 2002	0	4	9.3%	12	27.9%
1999-00	PBU	Bus Industry Based Ed	5	2	Fall Of 1999 And Fall 2002	0	1	50.0%	0	0.0%
1999-00	PBUL	**Bus Leadership and Mgt	24	21	Fall Of 1999 And Fall 2002	0	3	14.3%	3	14.3%
1999-00	PBUM	**Bus Markting and Mang	14	16	Fall Of 1999 And Fall 2002	0	3	18.8%	3	18.8%
1999-00	PCHA	Chrysler CAP IMP Auto	5	6	Fall Of 1999 And Fall 2002	0	2	33.3%	0	0.0%
1999-00	PCO	Computer App Specialist	67	66	Fall Of 1999 And Fall 2002	0	8	12.1%	4	6.1%
1999-00	PCOC	Computer App Spec CERT	20	18	Fall Of 1999 And Fall 2002	0	3	16.7%	0	0.0%
1999-00	PCOS	Cosmetology	20	17	Fall Of 1999 And Fall 2002	0	6	35.3%	1	5.9%
1999-00	PDE	Dental Hygiene	15	15	Fall Of 1999 And Fall 2002	0	1	6.7%	1	6.7%

Year	Major	MajorTitle	Majors	NonReturning	StartedBetween	<2YearTxfr	2YearTxfr	2Year%	4YearTxfr	4Year%
1999-00	PEA	Early Child Education	63	34	Fall Of 1999 And Fall 2002	0	2	5.9%	4	11.8%
1999-00	PEAC	Early Childhood Ed CERT	9	8	Fall Of 1999 And Fall 2002	0	1	12.5%	0	0.0%
1999-00	PEL	**Electronic Systms Tech	5	3	Fall Of 1999 And Fall 2002	0	2	66.7%	0	0.0%
1999-00	PELT	Electronics Technology	15	15	Fall Of 1999 And Fall 2002	0	1	6.7%	0	0.0%
1999-00	PEM	Emerg Med Tech R Cert	10	10	Fall Of 1999 And Fall 2002	0	4	40.0%	0	0.0%
1999-00	PEMT	Emerg Med Serv - BUS/IND	104	100	Fall Of 1999 And Fall 2002	0	28	28.0%	2	2.0%
1999-00	PEN	Entre Small Business Mgt	19	18	Fall Of 1999 And Fall 2002	0	2	11.1%	0	0.0%
1999-00	PENC	Ent Small Bus Mang CERT	4	4	Fall Of 1999 And Fall 2002	0	2	50.0%	0	0.0%
1999-00	PEV	Environ Science Safety	15	15	Fall Of 1999 And Fall 2002	0	1	6.7%	1	6.7%
1999-00	PFF	Fire Science Technology	2	2	Fall Of 1999 And Fall 2002	0	1	50.0%	0	0.0%
1999-00	PFI	Fisheries Technology	20	18	Fall Of 1999 And Fall 2002	0	4	22.2%	1	5.6%
1999-00	PFL	**Floral Tech And Design	4	2	Fall Of 1999 And Fall 2002	0	1	50.0%	0	0.0%
1999-00	PFOR	Ford ASSET Auto Tech	29	29	Fall Of 1999 And Fall 2002	0	3	10.3%	1	3.4%
1999-00	PFT	Forest Resources Tech	12	12	Fall Of 1999 And Fall 2002	0	0	0.0%	2	16.7%
1999-00	PFU	Funeral Serv Education	27	26	Fall Of 1999 And Fall 2002	0	1	3.8%	1	3.8%
1999-00	PGE	General Studies	2482	2132	Fall Of 1999 And Fall 2002	0	324	15.2%	280	13.1%
1999-00	PGR	Graphic Design	23	20	Fall Of 1999 And Fall 2002	0	1	5.0%	1	5.0%
1999-00	PGRA	Graphic Arts Technology	9	9	Fall Of 1999 And Fall 2002	0	0	0.0%	1	11.1%

Year	Major	MajorTitle	Majors	NonReturning	StartedBetween	<2YearTxfr	2YearTxfr	2Year%	4YearTxfr	4Year%
1999-00	PH	Horticulture	16	15	Fall Of 1999 And Fall 2002	0	1	6.7%	1	6.7%
1999-00	PHC	Horticulture CERT	5	5	Fall Of 1999 And Fall 2002	0	1	20.0%	0	0.0%
1999-00	PHO	Hospitality Tourism Mang	58	38	Fall Of 1999 And Fall 2002	0	5	13.2%	1	2.6%
1999-00	PIN	Int Natural Resource	11	11	Fall Of 1999 And Fall 2002	0	3	27.3%	1	9.1%
1999-00	PJO	Journalism Arts Tech	8	8	Fall Of 1999 And Fall 2002	0	1	12.5%	1	12.5%
1999-00	PLE	Legal Admin Assistant	22	18	Fall Of 1999 And Fall 2002	0	2	11.1%	0	0.0%
1999-00	PMA	Machine Tool Technology	18	14	Fall Of 1999 And Fall 2002	0	1	7.1%	1	7.1%
1999-00	PME	Mechanical Engin Tech	11	10	Fall Of 1999 And Fall 2002	0	3	30.0%	0	0.0%
1999-00	PMED	Medical Assistant	27	25	Fall Of 1999 And Fall 2002	0	3	12.0%	1	4.0%
1999-00	PMEO	Medical Off Specialist	8	8	Fall Of 1999 And Fall 2002	0	1	12.5%	0	0.0%
1999-00	PMES	Mental Health Human Serv	43	36	Fall Of 1999 And Fall 2002	0	4	11.1%	5	13.9%
1999-00	PMET	Medical Transcription	16	17	Fall Of 1999 And Fall 2002	0	3	17.6%	1	5.9%
1999-00	PMIT	Microelect Tech BUS/IND	1	2	Fall Of 1999 And Fall 2002	0	2	100.0%	0	0.0%
1999-00	PN	Nursing	38	35	Fall Of 1999 And Fall 2002	0	9	25.7%	1	2.9%
1999-00	PNA	Nursing Assistant R Cert	6	3	Fall Of 1999 And Fall 2002	0	2	66.7%	0	0.0%
1999-00	POC	Occupational Thrpy Asst	12	11	Fall Of 1999 And Fall 2002	0	1	9.1%	0	0.0%
1999-00	POF	Off Sftwr Specialist CERT	16	16	Fall Of 1999 And Fall 2002	0	2	12.5%	0	0.0%
1999-00	PPT	Physical Therapist Asst	27	23	Fall Of 1999 And Fall 2002	0	3	13.0%	2	8.7%

Year	Major	MajorTitle	Majors	NonReturning	StartedBetween	<2YearTxfr	2YearTxfr	2Year%	4YearTxfr	4Year%
1999-00	PPTR	Professional Photography	14	14	Fall Of 1999 And Fall 2002	0	1	7.1%	2	14.3%
1999-00	PRA	Radio Broadcasting	41	39	Fall Of 1999 And Fall 2002	0	3	7.7%	5	12.8%
1999-00	PRE	Respiratory Care	12	12	Fall Of 1999 And Fall 2002	0	5	41.7%	1	8.3%
1999-00	PRNS	RN Surg Orient R Cert	7	6	Fall Of 1999 And Fall 2002	0	1	16.7%	0	0.0%
1999-00	PSE	**Secretary General Cert	3	2	Fall Of 1999 And Fall 2002	0	1	50.0%	0	0.0%
1999-00	PSTT	Sp St Theatre Tech Desgn	1	1	Fall Of 1999 And Fall 2002	0	1	100.0%	0	0.0%
1999-00	PSU	Surgical Technology	14	13	Fall Of 1999 And Fall 2002	0	4	30.8%	2	15.4%
1999-00	PTE	Television Prod Tech	42	42	Fall Of 1999 And Fall 2002	0	9	21.4%	2	4.8%
1999-00	PWE	Welding Technology CERT	10	9	Fall Of 1999 And Fall 2002	0	2	22.2%	0	0.0%
1999-00	PWEE	Welding Evening R Cert	49	47	Fall Of 1999 And Fall 2002	0	5	10.6%	0	0.0%
1999-00	R2+2	2 + 2 Program	57	45	Fall Of 1999 And Fall 2002	0	6	13.3%	11	24.4%
1999-00	RA	ABE GED Tests ABE	84	13	Fall Of 1999 And Fall 2002	0	2	15.4%	0	0.0%
1999-00	RAB	ABE GED Tests GED	835	23	Fall Of 1999 And Fall 2002	0	1	4.3%	2	8.7%
1999-00	RAD	Adult Enrichment	4772	927	Fall Of 1999 And Fall 2002	0	105	11.3%	53	5.7%
1999-00	RBA	Basic Skills	1129	18	Fall Of 1999 And Fall 2002	0	2	11.1%	1	5.6%
1999-00	REA	Early Coll Opportunity	481	442	Fall Of 1999 And Fall 2002	0	21	4.8%	260	58.8%
1999-00	REN	English Second Language	1409	20	Fall Of 1999 And Fall 2002	0	2	10.0%	0	0.0%
1999-00	REV	Evening Summer High Sch	262	27	Fall Of 1999 And Fall 2002	0	1	3.7%	1	3.7%

Year	Major	MajorTitle	Majors	NonReturning	StartedBetween	<2YearTxfr	2YearTxfr	2Year%	4YearTxfr	4Year%
1999-00	RGL	Glassworkers	12	12	Fall Of 1999 And Fall 2002	0	1	8.3%	1	8.3%
1999-00	RHI	High School Student	79	40	Fall Of 1999 And Fall 2002	0	2	5.0%	16	40.0%
1999-00	RLI	Life Skills	314	23	Fall Of 1999 And Fall 2002	0	3	13.0%	1	4.3%
1999-00	RPE	Professional Enrichment	199	101	Fall Of 1999 And Fall 2002	0	7	6.9%	6	5.9%
1999-00	RSH	Sheet Metal Workers	77	77	Fall Of 1999 And Fall 2002	0	5	6.5%	1	1.3%
1999-00	RTA	Target Custom Training	2696	404	Fall Of 1999 And Fall 2002	0	40	9.9%	14	3.5%
1999-00	YAZ	**Legal Secretary	2	1	Fall Of 1999 And Fall 2002	0	0	0.0%	1	100.0%
1999-00 Total			17316	6480		0	822	12.7%	992	15.3%
2000-01	LAGR	Agriculture Transfer	1	1	Fall Of 2000 And Fall 2002	0	0	0.0%	1	100.0%
2000-01	LANT	Anthropology Transfer	7	7	Fall Of 2000 And Fall 2002	0	0	0.0%	2	28.6%
2000-01	LAR	Art Transfer	48	41	Fall Of 2000 And Fall 2002	0	7	17.1%	7	17.1%
2000-01	LARE	Art Education Transfer	1	1	Fall Of 2000 And Fall 2002	0	1	100.0%	0	0.0%
2000-01	LBI	Bio,Ent,Mic,Bot,Zoo Tran	34	32	Fall Of 2000 And Fall 2002	0	6	18.8%	11	34.4%
2000-01	LBUA	Business Admin Transfer	261	224	Fall Of 2000 And Fall 2002	0	43	19.2%	55	24.6%
2000-01	LBUD	Accelerated Bus Adm Tran	2	2	Fall Of 2000 And Fall 2002	0	1	50.0%	0	0.0%
2000-01	LBUE	Business Education Trans	9	10	Fall Of 2000 And Fall 2002	0	1	10.0%	3	30.0%
2000-01	LCHE	Chemistry Transfer	5	3	Fall Of 2000 And Fall 2002	0	0	0.0%	2	66.7%
2000-01	LCHI	Chiro Preprof Transfer	10	8	Fall Of 2000 And Fall 2002	0	0	0.0%	1	12.5%

Year	Major	MajorTitle	Majors	NonReturning	StartedBetween	<2YearTxfr	2YearTxfr	2Year%	4YearTxfr	4Year%
2000-01	LCOM	Computer Sci Transfer	96	90	Fall Of 2000 And Fall 2002	0	14	15.6%	18	20.0%
2000-01	LCRI	Crim Jus Admin Transfer	42	42	Fall Of 2000 And Fall 2002	0	4	9.5%	6	14.3%
2000-01	LDEN	Dental Hyg Preprof Trans	24	22	Fall Of 2000 And Fall 2002	0	9	40.9%	0	0.0%
2000-01	LDET	Dentistry Preprof Trans	8	8	Fall Of 2000 And Fall 2002	0	0	0.0%	7	87.5%
2000-01	LECO	Economics Transfer	4	3	Fall Of 2000 And Fall 2002	0	1	33.3%	0	0.0%
2000-01	LEDU	Education Transfer	135	125	Fall Of 2000 And Fall 2002	0	14	11.2%	31	24.8%
2000-01	LEN	Engineering Transfer	59	60	Fall Of 2000 And Fall 2002	0	12	20.0%	16	26.7%
2000-01	LENG	English Transfer	22	16	Fall Of 2000 And Fall 2002	0	3	18.8%	5	31.3%
2000-01	LFIS	Fish Wildlife Transfer	4	4	Fall Of 2000 And Fall 2002	0	1	25.0%	2	50.0%
2000-01	LFO	Foreign Lang Transfer	9	7	Fall Of 2000 And Fall 2002	0	1	14.3%	2	28.6%
2000-01	LFOR	Forest Res Preprof Trans	8	7	Fall Of 2000 And Fall 2002	0	0	0.0%	5	71.4%
2000-01	LGE	General Science Transfer	8	7	Fall Of 2000 And Fall 2002	0	2	28.6%	2	28.6%
2000-01	LGEC	Gen Soc Science Transfer	3	2	Fall Of 2000 And Fall 2002	0	0	0.0%	1	50.0%
2000-01	LGEL	Gen St Liberal Arts Tran	160	147	Fall Of 2000 And Fall 2002	0	20	13.6%	46	31.3%
2000-01	LGEM	GenSt Lib Arts CO PSU T	2	2	Fall Of 2000 And Fall 2002	0	0	0.0%	1	50.0%
2000-01	LGL	Geology Transfer	1	2	Fall Of 2000 And Fall 2002	0	0	0.0%	1	50.0%
2000-01	LHEC	Health Care Admin Trans	2	1	Fall Of 2000 And Fall 2002	0	0	0.0%	1	100.0%
2000-01	LHEH	Health,Health Ed Trans	6	6	Fall Of 2000 And Fall 2002	0	2	33.3%	2	33.3%

Year	Major	MajorTitle	Majors	NonReturning	StartedBetween	<2YearTxfr	2YearTxfr	2Year%	4YearTxfr	4Year%
2000-01	LHI	History Transfer	17	14	Fall Of 2000 And Fall 2002	0	1	7.1%	1	7.1%
2000-01	LINT	Internat Studies Trans	4	4	Fall Of 2000 And Fall 2002	0	0	0.0%	2	50.0%
2000-01	LJOU	Journalism Transfer	20	16	Fall Of 2000 And Fall 2002	0	3	18.8%	5	31.3%
2000-01	LMA	Mathematics Transfer	5	4	Fall Of 2000 And Fall 2002	0	2	50.0%	1	25.0%
2000-01	LME	Medicine Preprof Trans	17	13	Fall Of 2000 And Fall 2002	0	2	15.4%	3	23.1%
2000-01	LMU	Music Transfer	63	57	Fall Of 2000 And Fall 2002	0	7	12.3%	16	28.1%
2000-01	LNUR	Nursing Preprof Trans	74	73	Fall Of 2000 And Fall 2002	0	14	19.2%	15	20.5%
2000-01	LOCC	Occ Thrpy Preprof Trans	2	1	Fall Of 2000 And Fall 2002	0	1	100.0%	0	0.0%
2000-01	LOPT	Optometry Preprof Trans	3	3	Fall Of 2000 And Fall 2002	0	0	0.0%	1	33.3%
2000-01	LPHA	Pharmacy Preprof Trans	11	12	Fall Of 2000 And Fall 2002	0	4	33.3%	3	25.0%
2000-01	LPHI	Philosophy Transfer	5	5	Fall Of 2000 And Fall 2002	0	0	0.0%	1	20.0%
2000-01	LPHL	Physical Education Trans	16	15	Fall Of 2000 And Fall 2002	0	1	6.7%	3	20.0%
2000-01	LPHT	Phys Thrpy Preprof Trans	12	11	Fall Of 2000 And Fall 2002	0	2	18.2%	1	9.1%
2000-01	LPOL	Political Sci Transfer	4	5	Fall Of 2000 And Fall 2002	0	0	0.0%	3	60.0%
2000-01	LPSY	Psychology Transfer	103	84	Fall Of 2000 And Fall 2002	0	11	13.1%	30	35.7%
2000-01	LREL	Religious Stdys Transfer	4	4	Fall Of 2000 And Fall 2002	0	1	25.0%	0	0.0%
2000-01	LSOC	Sociology Transfer	8	8	Fall Of 2000 And Fall 2002	0	1	12.5%	1	12.5%
2000-01	LSPE	Speech Transfer	4	3	Fall Of 2000 And Fall 2002	0	0	0.0%	2	66.7%

Year	Major	MajorTitle	Majors	NonReturning	StartedBetween	<2YearTxfr	2YearTxfr	2Year%	4YearTxfr	4Year%
2000-01	LTHE	Theatre Transfer	19	15	Fall Of 2000 And Fall 2002	0	2	13.3%	3	20.0%
2000-01	PAC	Accounting Clerk CERT	13	13	Fall Of 2000 And Fall 2002	0	2	15.4%	0	0.0%
2000-01	PACT	Accounting Technology	46	38	Fall Of 2000 And Fall 2002	0	2	5.3%	2	5.3%
2000-01	PADC	**Admin Assistant Cert	1	1	Fall Of 2000 And Fall 2002	0	1	100.0%	0	0.0%
2000-01	PAR	Architect Eng Technology	17	15	Fall Of 2000 And Fall 2002	0	2	13.3%	1	6.7%
2000-01	PAV	Aviation Pilot-Airplane	62	54	Fall Of 2000 And Fall 2002	0	8	14.8%	5	9.3%
2000-01	PBEC	Bus eCommerce MarketMang	28	30	Fall Of 2000 And Fall 2002	0	4	13.3%	3	10.0%
2000-01	PBU	Bus Industry Based Ed	5	3	Fall Of 2000 And Fall 2002	0	1	33.3%	0	0.0%
2000-01	PBUL	**Bus Leadership and Mgt	6	4	Fall Of 2000 And Fall 2002	0	1	25.0%	0	0.0%
2000-01	PBUM	**Bus Markting and Mang	17	17	Fall Of 2000 And Fall 2002	0	1	5.9%	1	5.9%
2000-01	PCHA	Chrysler CAP IMP Auto	35	35	Fall Of 2000 And Fall 2002	0	8	22.9%	1	2.9%
2000-01	PCI	Civil Engineering Tech	12	10	Fall Of 2000 And Fall 2002	0	1	10.0%	2	20.0%
2000-01	PCO	Computer App Specialist	105	98	Fall Of 2000 And Fall 2002	0	7	7.1%	10	10.2%
2000-01	PCOC	Computer App Spec CERT	10	9	Fall Of 2000 And Fall 2002	0	1	11.1%	0	0.0%
2000-01	PCOS	Cosmetology	21	20	Fall Of 2000 And Fall 2002	0	2	10.0%	0	0.0%
2000-01	PCR	Credit UnionMang-BUS/IND	14	13	Fall Of 2000 And Fall 2002	0	2	15.4%	0	0.0%
2000-01	PEA	Early Child Education	70	61	Fall Of 2000 And Fall 2002	0	12	19.7%	6	9.8%
2000-01	PEAC	Early Childhood Ed CERT	48	30	Fall Of 2000 And Fall 2002	0	21	70.0%	0	0.0%

Year	Major	MajorTitle	Majors	NonReturning	StartedBetween	<2YearTxfr	2YearTxfr	2Year%	4YearTxfr	4Year%
2000-01	PELT	Electronics Technology	6	8	Fall Of 2000 And Fall 2002	0	2	25.0%	0	0.0%
2000-01	PEM	Emerg Med Tech R Cert	15	15	Fall Of 2000 And Fall 2002	0	2	13.3%	0	0.0%
2000-01	PEMT	Emerg Med Serv - BUS/IND	197	76	Fall Of 2000 And Fall 2002	0	18	23.7%	0	0.0%
2000-01	PEN	Entre Small Business Mgt	18	16	Fall Of 2000 And Fall 2002	0	0	0.0%	1	6.3%
2000-01	PEV	Environ Science Safety	14	14	Fall Of 2000 And Fall 2002	0	0	0.0%	3	21.4%
2000-01	PEVC	Env Science Safety CERT	3	2	Fall Of 2000 And Fall 2002	0	1	50.0%	0	0.0%
2000-01	PFF	Fire Science Technology	5	5	Fall Of 2000 And Fall 2002	0	3	60.0%	0	0.0%
2000-01	PFI	Fisheries Technology	32	32	Fall Of 2000 And Fall 2002	0	4	12.5%	1	3.1%
2000-01	PFT	Forest Resources Tech	17	16	Fall Of 2000 And Fall 2002	0	2	12.5%	2	12.5%
2000-01	PFU	Funeral Serv Education	23	23	Fall Of 2000 And Fall 2002	0	0	0.0%	2	8.7%
2000-01	PGE	General Studies	2355	2021	Fall Of 2000 And Fall 2002	0	330	16.3%	308	15.2%
2000-01	PGR	Graphic Design	21	21	Fall Of 2000 And Fall 2002	0	3	14.3%	0	0.0%
2000-01	PGRA	Graphic Arts Technology	9	9	Fall Of 2000 And Fall 2002	0	0	0.0%	1	11.1%
2000-01	PH	Horticulture	40	35	Fall Of 2000 And Fall 2002	0	4	11.4%	3	8.6%
2000-01	PHO	Hospitality Tourism Mang	52	45	Fall Of 2000 And Fall 2002	0	6	13.3%	5	11.1%
2000-01	PIN	Int Natural Resource	32	29	Fall Of 2000 And Fall 2002	0	4	13.8%	2	6.9%
2000-01	PJO	Journalism Arts Tech	7	7	Fall Of 2000 And Fall 2002	0	1	14.3%	1	14.3%
2000-01	PLE	Legal Admin Assistant	23	21	Fall Of 2000 And Fall 2002	0	2	9.5%	1	4.8%

Year	Major	MajorTitle	Majors	NonReturning	StartedBetween	<2YearTxfr	2YearTxfr	2Year%	4YearTxfr	4Year%
2000-01	PMA	Machine Tool Technology	19	16	Fall Of 2000 And Fall 2002	0	4	25.0%	0	0.0%
2000-01	PME	Mechanical Engin Tech	9	9	Fall Of 2000 And Fall 2002	0	1	11.1%	0	0.0%
2000-01	PMED	Medical Assistant	35	29	Fall Of 2000 And Fall 2002	0	6	20.7%	0	0.0%
2000-01	PMEN	Med Office Coding R CERT	13	13	Fall Of 2000 And Fall 2002	0	2	15.4%	0	0.0%
2000-01	PMES	Mental Health Human Serv	40	36	Fall Of 2000 And Fall 2002	0	2	5.6%	10	27.8%
2000-01	PMET	Medical Transcription	25	25	Fall Of 2000 And Fall 2002	0	2	8.0%	0	0.0%
2000-01	PN	Nursing	33	26	Fall Of 2000 And Fall 2002	0	4	15.4%	2	7.7%
2000-01	PNA	Nursing Assistant R Cert	11	12	Fall Of 2000 And Fall 2002	0	1	8.3%	0	0.0%
2000-01	POC	Occupational Thrpy Asst	8	7	Fall Of 2000 And Fall 2002	0	2	28.6%	0	0.0%
2000-01	PPT	Physical Therapist Asst	25	22	Fall Of 2000 And Fall 2002	0	1	4.5%	1	4.5%
2000-01	PPTR	Professional Photography	9	7	Fall Of 2000 And Fall 2002	0	1	14.3%	0	0.0%
2000-01	PRA	Radio Broadcasting	42	41	Fall Of 2000 And Fall 2002	0	3	7.3%	6	14.6%
2000-01	PRE	Respiratory Care	19	19	Fall Of 2000 And Fall 2002	0	2	10.5%	3	15.8%
2000-01	PTE	Television Prod Tech	36	32	Fall Of 2000 And Fall 2002	0	4	12.5%	1	3.1%
2000-01	PUND	Undeclared Major	361	296	Fall Of 2000 And Fall 2002	0	37	12.5%	27	9.1%
2000-01	PWE	Welding Technology CERT	28	26	Fall Of 2000 And Fall 2002	0	3	11.5%	0	0.0%
2000-01	PWEE	Welding Evening R Cert	28	28	Fall Of 2000 And Fall 2002	0	1	3.6%	0	0.0%
2000-01	R2+2	2 + 2 Program	135	110	Fall Of 2000 And Fall 2002	0	5	4.5%	23	20.9%

Year	Major	MajorTitle	Majors	NonReturning	StartedBetween	<2YearTxfr	2YearTxfr	2Year%	4YearTxfr	4Year%
2000-01	RA	ABE GED Tests ABE	42	9	Fall Of 2000 And Fall 2002	0	3	33.3%	0	0.0%
2000-01	RAB	ABE GED Tests GED	772	36	Fall Of 2000 And Fall 2002	0	5	13.9%	0	0.0%
2000-01	RAD	Adult Enrichment	4213	870	Fall Of 2000 And Fall 2002	0	93	10.7%	56	6.4%
2000-01	RBA	Basic Skills	1251	16	Fall Of 2000 And Fall 2002	0	3	18.8%	0	0.0%
2000-01	REA	Early Coll Opportunity	522	481	Fall Of 2000 And Fall 2002	0	15	3.1%	298	62.0%
2000-01	REN	English Second Language	1231	38	Fall Of 2000 And Fall 2002	0	5	13.2%	0	0.0%
2000-01	REV	Evening Summer High Sch	274	43	Fall Of 2000 And Fall 2002	0	6	14.0%	1	2.3%
2000-01	RGL	Glassworkers	20	20	Fall Of 2000 And Fall 2002	0	2	10.0%	0	0.0%
2000-01	RHI	High School Student	105	64	Fall Of 2000 And Fall 2002	0	4	6.3%	26	40.6%
2000-01	RLI	Life Skills	170	14	Fall Of 2000 And Fall 2002	0	1	7.1%	0	0.0%
2000-01	RPE	Professional Enrichment	217	114	Fall Of 2000 And Fall 2002	0	4	3.5%	3	2.6%
2000-01	RSH	Sheet Metal Workers	135	122	Fall Of 2000 And Fall 2002	0	11	9.0%	1	0.8%
2000-01	RTA	Target Custom Training	2297	438	Fall Of 2000 And Fall 2002	0	46	10.5%	23	5.3%
2000-01	XCP	**General Studies	3	1	Fall Of 2000 And Fall 2002	0	1	100.0%	0	0.0%
2000-01 Total			16869	7093		0	932	13.1%	1161	16.4%
Grand Total			75154	29948		4	4900	16.4%	5100	17.0%

Appendix IV

Course-Based Transfer Evaluation: MHCC Transfer Students Attending Portland State University in Selected Courses 1994-1999

COURSE BASED TRANSFER EVALUATION (CBTE)

**Mt. Hood Community College Transfer Students Attending
Portland State University in Selected Courses
1994-1999**

Portland State University/Community College Research Consortium (CRC)

February 2001

For further information contact:

R. Dan Walleri
Director, Research & Planning
Mt. Hood Community College
26000 SE Stark St.
Gresham, OR 97030
(503) 491-6924
wallerid@mhcc.edu

The table on the following pages describes results from preliminary implementation of a course-based transfer evaluation design by the Portland State University/Community College Research Consortium (CRC). The design was originally developed at a community college and university on the East coast and has subsequently been adopted by numerous colleges across the country. The idea was to produce evaluation results that would be useful by faculty at the community college in preparing students for transfer. The Office of Institutional Research and Planning (OIRP) at PSU produced the results reported here.

The table displays results for selected PSU courses with combined results for the 1994-1999 years. The breakdown of results is based on where students took the prerequisite course for the PSU course (PSU, PCC, MHCC, Clackamas or Clark). For each institution, the count and percent of students passing (D grade and above) are reported along with Chi-Square test. The selected courses cover Chemistry, Computer Science, Math, and Physics. The results for MHCC are very positive, with typically 90% or more of the students achieving a passing grade.

At MHCC, these results will be used in supporting institutional effectiveness and educational assessment efforts. Overall summary results can be incorporated into the annual institutional effectiveness report. Discipline and course specific results can be used in the educational assessments being conducted by each college program and discipline. Course specific results can also be used in the proposed assessment design for General Education currently being reviewed by the Educational Assessment Task Force.

The CRC is still at the design/review stage of implementing this reporting system and additional work will be required to make operational and ongoing. Feedback and suggestions for improvement are welcomed.

Course Transfer Performance Report Summary

Chemistry

CH221 General Chemistry

			No Pass	Pass	Total
Community College	PSU	Count	55	140	195
		Percent	28.2	71.8	100
	PCC	Count	11	66	77
		Percent	14.3	85.7	100
	MHCC	Count	2	35	37
		Percent	5.4	94.6	100
CCC	Count	0	14	14	
	Percent	0	100	100	
Clark	Count	0	10	10	
	Percent	0	100	100	
Total	Count	68	265	333	
	Percent	20.4	79.6	100	

Chi-Square Tests

	Value	df	Asymp. Sig. (2-sided)
Pearson Chi-Square	20.35	4	0.0004
Likelihood Ratio	26.39	4	0.0000
N of Valid Cases	333		

2 cells (20.0%) have expected count less than 5. The minimum expected count is 2.04.

CH411 Chemical Bonding

			No Pass	Pass	Total
Community College	PSU	Count	2	1	3
		Percent	66.7	33.3	100
	PCC	Count	1	4	5
		Percent	20	80	100
MHCC	Count	1		1	
	Percent	100		100	
Clark	Count	0	1	1	
	Percent	0	100	100	
Total	Count	4	6	10	
	Percent	40	60	100	

Chi-Square Tests

	Value	df	Asymp. Sig. (2-sided)
Pearson Chi-Square	3.89	3	0.2737
Likelihood Ratio	4.64	3	0.2004
N of Valid Cases	10		

8 cells (100.0%) have expected count less than 5. The minimum expected count is .40.

CH440 Physical Chemistry

			No Pass	Pass	Total
Community College	PSU	Count	1	6	7
		Percent	14.3	85.7	100
	PCC	Count	1	6	7
		Percent	14.3	85.7	100
	Clark	Count	1	1	2
		Percent	50	50	100
Total		Count	3	13	16
		Percent	18.8	81.3	100

Computer Science

CS105 Computer Fundamentals I

		No Pass	Pass	Total	
Community College	PSU	Count	14	183	197
		Percent	7.1	92.9	100
	PCC	Count	2	87	89
		Percent	2.2	97.8	100
	MHCC	Count	0	31	31
		Percent	0	100	100
CCC	Count	0	14	14	
	Percent	0	100	100	
Clark	Count	1	6	7	
	Percent	14.3	85.7	100	
Total	Count	17	321	338	
	Percent	5.0	95.0	100	

Chi-Square Tests

	Value	df	Asymp. Sig. (2-sided)
Pearson Chi-Square	6.86	4	0.1435
Likelihood Ratio	8.89	4	0.0639
N of Valid Cases	338		

4 cells (40.0%) have expected count less than 5. The minimum expected count is .35.

CS161 Intro. Computer Science I

		No Pass	Pass	Total	
Community College	PSU	Count	24	82	106
		Percent	22.6	77.4	100
	PCC	Count	10	63	73
		Percent	13.7	86.3	100
	MHCC	Count	9	21	30
		Percent	30	70	100
CCC	Count	3	18	21	
	Percent	14.3	85.7	100	
Clark	Count	0.0	22	22	
	Percent	0	100	100	
Total	Count	46	206	252	
	Percent	18.3	81.7	100	

Chi-Square Tests

	Value	df	Asymp. Sig. (2-sided)
Pearson Chi-Square	10.29	4	0.0358
Likelihood Ratio	13.91	4	0.0076
N of Valid Cases	252		

2 cells (20.0%) have expected count less than 5. The minimum expected count is 3.83.

CS207 Introduction to Programming in COBOL

			Pass	Total
Community College	PSU	Count	5	5
		Percent	100	100
	PCC	Count	6	6
		Percent	100	100
MHCC	Count	2	2	
	Percent	100	100	
Total	Clark	Count	1	1
		Percent	100	100
	Count	14	14	
	Percent	100	100	

Chi-Square Tests

	Value	df
Pearson Chi-Square	.	
N of Valid Cases		14

No statistics are computed because TRGP_NP target grade pass/no pass is a constant.

CS208 Intro to Programming in FORTRAN

			No Pass	Pass	Total
Community College	PSU	Count	0	2	2
		Percent	0	100	100
	PCC	Count	0	3	3
		Percent	0	100	100
MHCC	Count	1	3	4	
	Percent	25	75	100	
Total	CCC	Count	0.0	1	1
		Percent	0	100	100
	Clark	Count	0	2	2
		Percent	0	100	100
Count	1	11	12		
Percent	8.3	91.7	100		

Chi-Square Tests

	Value	df	Asymp. Sig. (2-sided)
Pearson Chi-Square	2.18	4	0.7024
Likelihood Ratio	2.39	4	0.6653
N of Valid Cases		12	

10 cells (100.0%) have expected count less than 5. The minimum expected count is .08.

CS250 Discrete Structures

		No Pass	Pass	Total	
Community College	PSU	Count	1	16	17
		Percent	5.9	94.1	100
	PCC	Count	1	51	52
		Percent	1.9	98.1	100
	MHCC	Count	2	12	14
		Percent	14.3	85.7	100
	CCC	Count	0	10	10
		Percent	0	100	100
	Clark	Count	2	10	12
		Percent	16.7	83.3	100
Total		Count	6	99	105
		Percent	5.7	94.3	100

Chi-Square Tests

	Value	df	Asymp. Sig. (2-sided)
Pearson Chi-Square	6.57	4	0.1601
Likelihood Ratio	6.21	4	0.1840
N of Valid Cases	105		

5 cells (50.0%) have expected count less than 5. The minimum expected count is .57.

Math

MTH112 Introductory College Math II

			No Pass	Pass	Total
Community College	PSU	Count	62	295	357
		Percent	17.4	82.6	100
	PCC	Count	9	40	49
		Percent	18.4	81.6	100
	MHCC	Count	5	16	21
		Percent	23.8	76.2	100
CCC	Count	2	10	12	
	Percent	16.7	83.3	100	
Clark	Count	2	10	12	
	Percent	16.7	83.3	100	
Total	Count	80	371	451	
	Percent	17.7	82.3	100	

Chi-Square Tests

	Value	df	Asymp. Sig. (2-sided)
Pearson Chi-Square	0.60	4	0.9635
Likelihood Ratio	0.56	4	0.9678
N of Valid Cases	451		

3 cells (30.0%) have expected count less than 5. The minimum expected count is 2.13.

MTH212 Foundations of Elementary Math II

			No Pass	Pass	Total
Community College	PSU	Count	9	210	219
		Percent	4.1	95.9	100
	PCC	Count	0	4	4
		Percent	0	100	100
	MHCC	Count	0	1	1
		Percent	0	100	100
CCC	Count	0	2	2	
	Percent	0	100	100	
Clark	Count	0	1	1	
	Percent	0	100	100	
Total	Count	9	218	227	
	Percent	4.0	96.0	100	

Chi-Square Tests

	Value	df	Asymp. Sig. (2-sided)
Pearson Chi-Square	0.34	4	0.9869
Likelihood Ratio	0.66	4	0.9563
N of Valid Cases	227		

8 cells (80.0%) have expected count less than 5. The minimum expected count is .04.

MTH213 Foundations of Elementary Math III

			No Pass	Pass	Total
Community College	PSU	Count	4	50	54
		Percent	7.4	92.6	100
	PCC	Count	0	4	4
		Percent	0	100	100
CCC	Count	0	3	3	
	Percent	0	100	100	
Total	Count	4	57	61	
	Percent	6.6	93.4	100	

Chi-Square Tests

	Value	df	Asymp. Sig. (2-sided)
Pearson Chi-Square	0.55	2	0.7577
Likelihood Ratio	1.01	2	0.6033
N of Valid Cases	61		

5 cells (83.3%) have expected count less than 5. The minimum expected count is .20.

MTH241 Calculus for Management and Soc. Sci

			No Pass	Pass	Total
Community College	PSU	Count	32	96	128
		Percent	25	75	100
	PCC	Count	7	48	55
		Percent	12.7	87.3	100
MHCC	Count	5	41	46	
	Percent	10.9	89.1	100	
CCC	Count	3	25	28	
	Percent	10.7	89.3	100	
Clark	Count	0	4	4	
	Percent	0	100	100	
Total	Count	47	214	261	
	Percent	18.0	82.0	100	

Chi-Square Tests

	Value	df	Asymp. Sig. (2-sided)
Pearson Chi-Square	8.75	4	0.0676
Likelihood Ratio	9.55	4	0.0488
N of Valid Cases	261		

2 cells (20.0%) have expected count less than 5. The minimum expected count is .72.

MTH251 Calculus I

		No Pass	Pass	Total
Community College	PSU	Count 51	133	184
		Percent 27.7	72.3	100
	PCC	Count 6	46	52
		Percent 11.5	88.5	100
	MHCC	Count 8	34	42
		Percent 19.0	81.0	100
	CCC	Count 3	20	23
		Percent 13.0	87.0	100
Total		Count 68	233	301
		Percent 22.6	77.4	100

Chi-Square Tests

	Value	df	Asymp. Sig. (2-sided)
Pearson Chi-Square	7.90	3	0.0482
Likelihood Ratio	8.52	3	0.0364
N of Valid Cases	301		

0 cells (.0%) have expected count less than 5. The minimum expected count is 5.20.

MTH252 Calculus II

		No Pass	Pass	Total
Community College	PSU	Count 58	606	664
		Percent 8.7	91.3	100
	PCC	Count 7	41	48
		Percent 14.6	85.4	100
	MHCC	Count 3	7	10
		Percent 30	70	100
	CCC	Count 2	10	12
		Percent 16.7	83.3	100
	Clark	Count 1	11	12
		Percent 8.3	91.7	100
Total		Count 71	675	746
		Percent 9.5	90.5	100

Chi-Square Tests

	Value	df	Asymp. Sig. (2-sided)
Pearson Chi-Square	7.51	4	0.1114
Likelihood Ratio	5.64	4	0.2273
N of Valid Cases	746		

4 cells (40.0%) have expected count less than 5. The minimum expected count is .95.

MTH253 Calculus III

		No Pass	Pass	Total
Community College	PSU	Count 29	177	206
		Percent 14.1	85.9	100
	PCC	Count 7	31	38
		Percent 18.4	81.6	100
	MHCC	Count 1	11	12
		Percent 8.3	91.7	100
	CCC	Count 2	7	9
		Percent 22.2	77.8	100
	Clark	Count 3	11	14
		Percent 21.4	78.6	100
Total		Count 42	237	279
		Percent 15.1	84.9	100

Chi-Square Tests

	Value	df	Asymp. Sig. (2-sided)
Pearson Chi-Square	1.72	4	0.7869
Likelihood Ratio	1.69	4	0.7920
N of Valid Cases	279		

3 cells (30.0%) have expected count less than 5. The minimum expected count is 1.35.

MTH254 Calculus IV

		No Pass	Pass	Total
Community College	PSU	Count 15	147	162
		Percent 9.3	90.7	100
	PCC	Count 5	29	34
		Percent 14.7	85.3	100
	MHCC	Count 3	22	25
		Percent 12	88	100
	CCC	Count 3	12	15
		Percent 20	80	100
	Clark	Count 2	6	8
		Percent 25	75	100
Total		Count 28	216	244
		Percent 11.5	88.5	100

Chi-Square Tests

	Value	df	Asymp. Sig. (2-sided)
Pearson Chi-Square	3.65	4	0.4550
Likelihood Ratio	3.19	4	0.5264
N of Valid Cases	244		

4 cells (40.0%) have expected count less than 5. The minimum expected count is .92.

MTH256 Applied Differential Equations I

		No Pass	Pass	Total	
Community College	PSU	Count	11	64	75
		Percent	14.7	85.3	100
	PCC	Count	6	36	42
		Percent	14.3	85.7	100
	MHCC	Count	0	12	12
		Percent	0	100	100
CCC	Count	1	13	14	
	Percent	7.1	92.9	100	
Clark	Count	0	11	11	
	Percent	0	100	100	
Total	Count	18	136	154	
	Percent	11.7	88.3	100	

Chi-Square Tests

	Value	df	Asymp. Sig. (2-sided)
Pearson Chi-Square	4.24	4	0.3741
Likelihood Ratio	6.90	4	0.1413
N of Valid Cases	154		

4 cells (40.0%) have expected count less than 5. The minimum expected count is 1.29.

MTH311 Advanced Calculus

		No Pass	Pass	Total	
Community College	PSU	Count	2	7	9
		Percent	22.2	77.8	100
	PCC	Count	4	17	21
		Percent	19.0	81.0	100
	MHCC	Count	1	4	5
		Percent	20	80	100
CCC	Count	4	1	5	
	Percent	80	20	100	
Clark	Count	2	2	4	
	Percent	50	50	100	
Total	Count	13	31	44	
	Percent	29.5	70.5	100	

Chi-Square Tests

	Value	df	Asymp. Sig. (2-sided)
Pearson Chi-Square	8.48	4	0.0755
Likelihood Ratio	7.87	4	0.0963
N of Valid Cases	44		

7 cells (70.0%) have expected count less than 5. The minimum expected count is 1.18.

MTH332 Geometry

		No Pass	Pass	Total
Community College	PSU	Count 3	6	9
		Percent 33.3	66.7	100
	PCC	Count 1	16	17
		Percent 5.9	94.1	100
	CCC	Count 0	3	3
		Percent 0	100	100
	Clark	Count 0	1	1
		Percent 0	100	100
Total		Count 4	26	30
		Percent 13.3	86.7	100

Chi-Square Tests

	Value	df	Asymp. Sig. (2-sided)
Pearson Chi-Square	4.55	3	0.2081
Likelihood Ratio	4.50	3	0.2126
N of Valid Cases	30		

6 cells (75.0%) have expected count less than 5. The minimum expected count is .13.

MTH338 Transformation Geometry

		No Pass	Pass	Total
Community College	PSU	Count 1	9	10
		Percent 10	90	100
	PCC	Count 2	17	19
		Percent 10.5	89.5	100
	MHCC	Count 1		1
		Percent 100		100
	Clark	Count 2	1	3
		Percent 66.7	33.3	100
Total		Count 6	27	33
		Percent 18.2	81.8	100

Chi-Square Tests

	Value	df	Asymp. Sig. (2-sided)
Pearson Chi-Square	10.44	3	0.0152
Likelihood Ratio	8.19	3	0.0423
N of Valid Cases	33		

6 cells (75.0%) have expected count less than 5. The minimum expected count is .18.

MTH343 Applied Linear Algebra

		No Pass	Pass	Total	
Community College	PSU	Count	9	60	69
		Percent	13.0	87.0	100
	PCC	Count	8	111	119
		Percent	6.7	93.3	100
	MHCC	Count	3	21	24
		Percent	12.5	87.5	100
	CCC	Count	4	15	19
		Percent	21.1	78.9	100
	Clark	Count	0	11	11
		Percent	0	100	100
Total		Count	24	218	242
		Percent	9.9	90.1	100

Chi-Square Tests

	Value	df	Asymp. Sig. (2-sided)
Pearson Chi-Square	6.14	4	0.1888
Likelihood Ratio	6.74	4	0.1504
N of Valid Cases	242		

3 cells (30.0%) have expected count less than 5. The minimum expected count is 1.09.

MTH344 Intro to Group Theory and Application

		No Pass	Pass	Total	
Community College	PSU	Count	1	12	13
		Percent	7.7	92.3	100
	PCC	Count	2	15	17
		Percent	11.8	88.2	100
	MHCC	Count	0	5	5
		Percent	0	100	100
	CCC	Count	1	6	7
		Percent	14.3	85.7	100
	Clark	Count	1	3	4
		Percent	25	75	100
Total		Count	5	41	46
		Percent	10.9	89.1	100

Chi-Square Tests

	Value	df	Asymp. Sig. (2-sided)
Pearson Chi-Square	1.67	4	0.7965
Likelihood Ratio	2.02	4	0.7318
N of Valid Cases	46		

7 cells (70.0%) have expected count less than 5. The minimum expected count is .43.

MTH346 Number Theory

		No Pass	Pass	Total
Community College	PSU	Count 2	8	10
		Percent 20	80	100
	PCC	Count 3	11	14
		Percent 21.4	78.6	100
	MHCC	Count 0	2	2
		Percent 0	100	100
	CCC	Count 1	3	4
		Percent 25	75	100
	Clark	Count 0	2	2
		Percent 0	100	100
Total		Count 6	26	32
		Percent 18.8	81.3	100

Chi-Square Tests

	Value	df	Asymp. Sig. (2-sided)
Pearson Chi-Square	1.10	4	0.8940
Likelihood Ratio	1.83	4	0.7670
N of Valid Cases	32		

8 cells (80.0%) have expected count less than 5. The minimum expected count is .38.

Physics

PH201 General Physics

			No Pass	Pass	Total
Community College	PSU	Count	3	48	51
		Percent	5.9	94.1	100
	PCC	Count	0	48	48
		Percent	0	100	100
	MHCC	Count	1	25	26
		Percent	3.8	96.2	100
CCC	Count	0	14	14	
	Percent	0	100	100	
Total	Count	4	135	139	
	Percent	2.9	97.1	100	

Chi-Square Tests

	Value	df	Asymp. Sig. (2-sided)
Pearson Chi-Square	3.57	3	0.3116
Likelihood Ratio	4.97	3	0.1738
N of Valid Cases	139		

4 cells (50.0%) have expected count less than 5. The minimum expected count is .40.

PH211 General Physics

			No Pass	Pass	Total
Community College	PSU	Count	7	73	80
		Percent	8.75	91.25	100
	PCC	Count	6	41	47
		Percent	12.8	87.2	100
	MHCC	Count	1	27	28
		Percent	3.6	96.4	100
CCC	Count	1	15	16	
	Percent	6.3	93.8	100	
Clark	Count	0	14	14	
	Percent	0	100	100	
Total	Count	15	170	185	
	Percent	8.1	91.9	100	

Chi-Square Tests

	Value	df	Asymp. Sig. (2-sided)
Pearson Chi-Square	3.50	4	0.4785
Likelihood Ratio	4.63	4	0.3269
N of Valid Cases	185		

4 cells (40.0%) have expected count less than 5. The minimum expected count is 1.14.

PH221 General Physics

		No Pass	Pass	Total
Community College	PSU	Count 2	16	18
		Percent 11.1	88.9	100
	PCC	Count 1	8	9
		Percent 11.1	88.9	100
	MHCC	Count 0	4	4
		Percent 0	100	100
	CCC	Count 0	1	1
		Percent 0	100	100
	Clark	Count 0	2	2
		Percent 0	100	100
Total		Count 3	31	34
		Percent 8.8	91.2	100

Chi-Square Tests

	Value	df	Asymp. Sig. (2-sided)
Pearson Chi-Square	0.85	4	0.9312
Likelihood Ratio	1.46	4	0.8343
N of Valid Cases	34		

8 cells (80.0%) have expected count less than 5. The minimum expected count is .09.

PH311 Intro to Modern Physics

		Pass	Total
Community College	PSU	Count 8	8
		Percent 100	100
	PCC	Count 15	15
		Percent 100	100
	MHCC	Count 1	1
		Percent 100	100
	CCC	Count 3	3
		Percent 100	100
	Clark	Count 1	1
		Percent 100	100
Total		Count 28	28
		Percent 100	100

Chi-Square Tests

	Value	df
Pearson Chi-Square	.	
N of Valid Cases		28

No statistics are computed because TRGP_NP target grade pass/no pass is a constant.

PH464 Applied Optics

			Pass	Total
Community College	PSU	Count	6	6
		Percent	100	100
	PCC	Count	35	35
		Percent	100	100
	CCC	Count	1	1
		Percent	100	100
Clark	Count	2	2	
	Percent	100	100	
Total		Count	44	44
		Percent	100	100

Chi-Square Tests

	Value
Pearson Chi-Square	.
N of Valid Cases	44

No statistics are computed because TRGP_NP target grade pass/no pass is a constant.