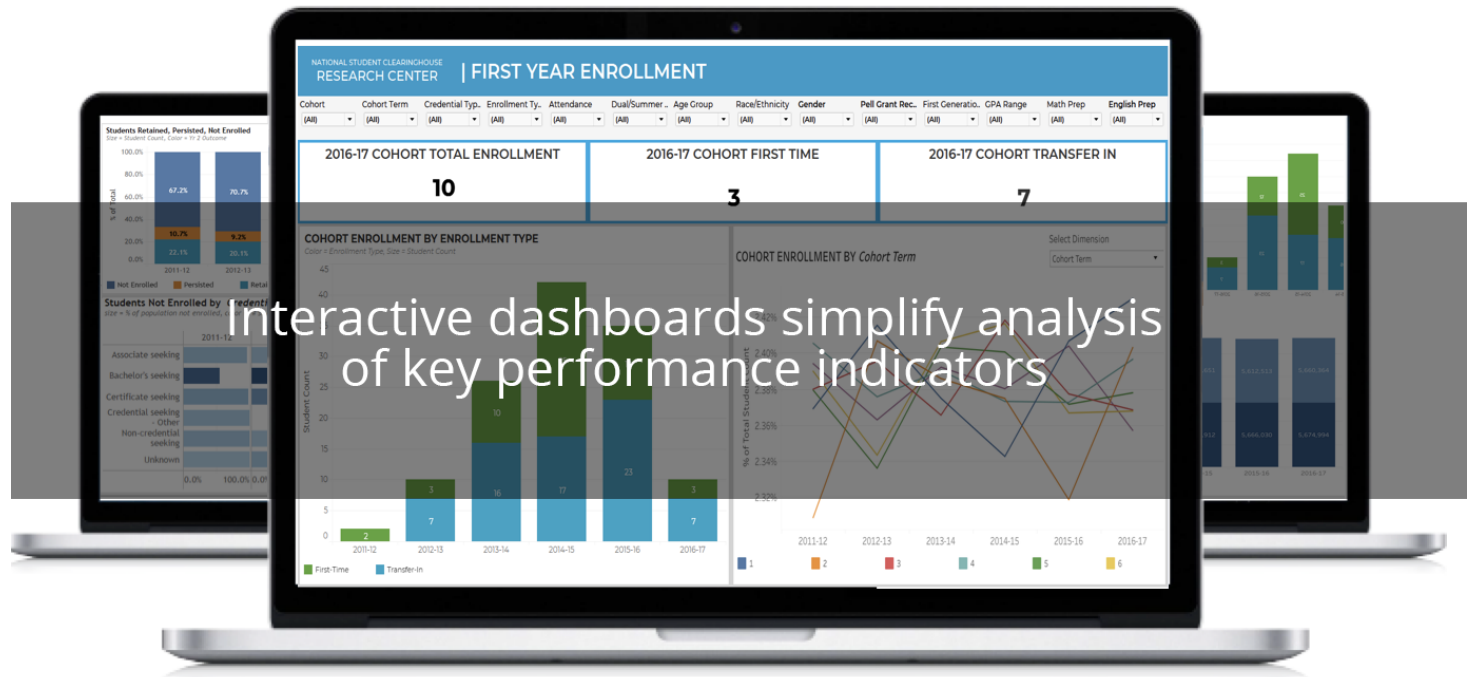




Postsecondary Data Partnership

Better data for better
student outcomes

Participating in the Postsecondary Data Partnership (PDP) enables you to spend more time on data analytics and less time on data submission.



Features

- Interactive dashboards that simplify analysis of key performance indicators, such as:
 - Credit accumulation rate
 - Gateway course completion
 - Persistence/retention of students
- Executive summary for easy distribution
- Analysis-ready file with calculated metrics to match to other metrics like early alerts
- Dashboard filters driving successful student outcomes, such as:
 - Enrollment status
 - Math and English gateway
 - Race/ethnicity
 - Age
 - Academic preparedness and more

Benefits

- Spend less time on data submission and more time on data-driven decisions
- Quickly assess and analyze your current student success interventions
- Promote collaboration across your campus with everyone using the same metrics
- Submit data once, and report to many entities
- Includes all new students from every semester providing you a true picture of your student population
- Send both Reverse Transfer and PDP data in a single file submission

Your PDP Submission

PDP participants submit two additional files (*see the back for more*):

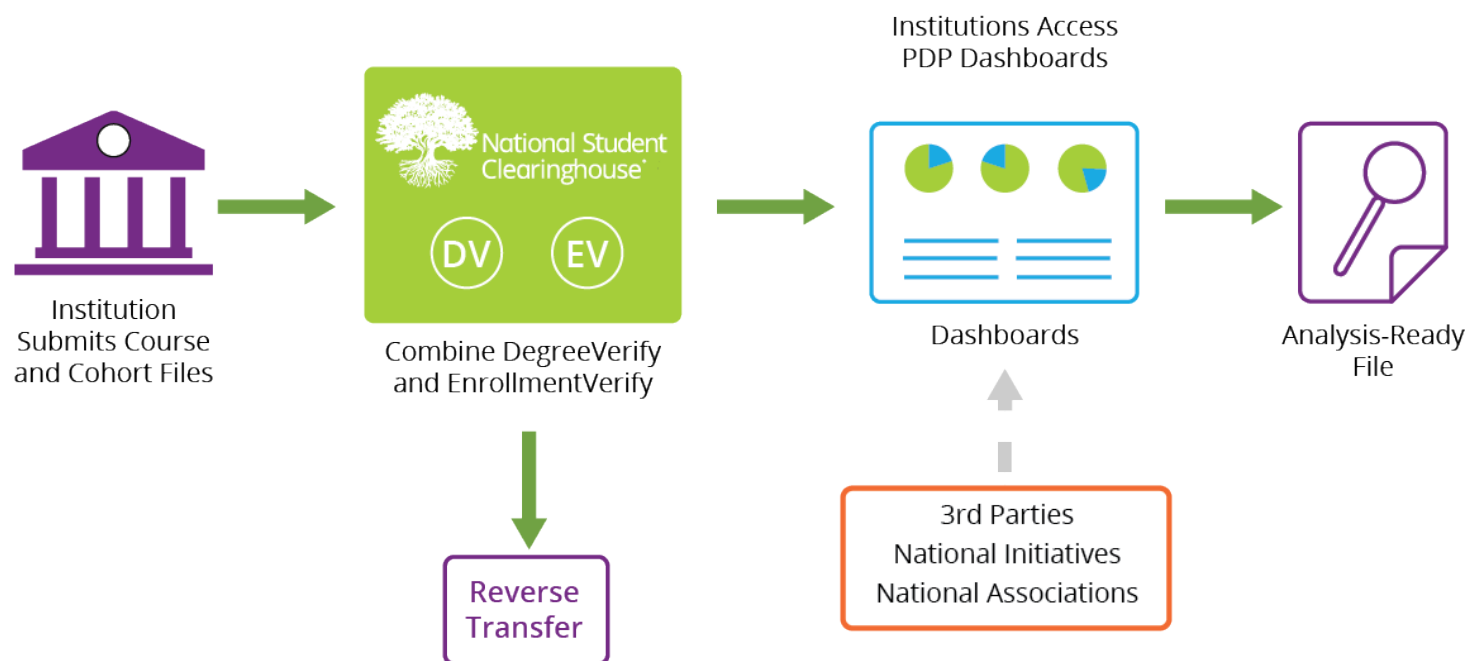
- **Cohort file:** All students (not just first time, full time)
- **Course and grade file:** All students

To learn more or sign up for PDP,
contact PDPService@studentclearinghouse.org



National Student Clearinghouse™
Research Center™

How the Postsecondary Data Partnership Works



1. Upon signing up for the PDP, institutions will submit two new data files twice a year to the Clearinghouse that include cohort and course information.

Cohort File

- Enrollment type
- High school GPA
- First-generation status
- Dual enrollment
- Credits transferred in Math & English readiness

Course File

- Pell status
- Program Intent (degree type, transfer)
- GPA (term, cum)
- Course name, number, CIP, type
- Course credits, grade, etc.
- Reverse Transfer information (if participating)

2. The Clearinghouse validates and processes your data, including:

- Aligning enrollment and degree data with cohort and course data
- Offering interactive dashboards on the key performance indicators
- Providing each institution with an analysis-ready file that enables more in-depth analysis into student outcomes across a range of variables using multiple student characteristics

3. You can use the PDP dashboard to:

- Help with student success interventions
- Report to multiple third parties, such as national initiatives, national associations and grant makers

To learn more or sign up for PDP,
contact PDPService@studentclearinghouse.org

©2019 National Student Clearinghouse. All rights reserved. 0819-500



National Student Clearinghouse™
Research Center™